

8 7 6 5 4 3 2

DOCUMENT SRIVF201

STAINLESS STEEL VACUUM FLANGE W/LASER WELDED DOUBLE-ENDED MICRO-D FEEDTHROUGH

REVISIONS			
REV	CHANGE NO.	DATE	CFG APPROVAL
-	INIT RLSE	2/25/2010	J. PETRI

- DOUBLE-ENDED (STANDARD FEMALE RECEPTACLE/CUSTOM RECEPTACLE) CONFIGURATION WITH THE WELD INTERFACE AT THE TOP
- AMBIENT INTERFACE CONFORMS TO MIL-DTL-83513/2 AND IS AVAILABLE IN 9, 15, 21, 25, 31, 37, 51 AND 100 COUNT CONTACT CONFIGURATIONS.
- VACUUM INTERFACE MATES WITH NONHERMETIC CONNECTOR SRIMD204.
- INCORPORATES BERYLLIUM-COPPER CONTACTS INDIVIDUALLY SEALED USING CERAMAX® PROPRIETARY CERAMIC TO ESTABLISH A DURABLE HERMETIC SEAL.

1. LEAK RATE: LESS THAN OR EQUAL TO 2X10E-10 CC/SEC H₂ AT ONE ATMOSPHERE DIFFERENTIAL PRESSURE. TEST TO 1X10E-9 CC/SEC H₂ AT ONE ATMOSPHERE DIFFERENTIAL PRESSURE.
2. MATERIALS:
 CONTACTS: BERYLLIUM-COPPER ALLOY 172/173 IN ACCORDANCE WITH ASTM B196/197.
 DIELECTRIC: CERAMAX PROPRIETARY CERAMIC.
 SHELL: STAINLESS STEEL ALLOY 304L IN ACCORDANCE WITH SAE AMS-QQ-S-743.
 INTERFACIAL SEAL: FLUOROSILICONE RUBBER, CLASS 1, TYPE 2, GRADE 60 IN ACCORDANCE WITH MIL-R-25988.
 VACUUM FLANGE: 304L STAINLESS STEEL
3. FINISH:
 CONTACTS: NICKEL PLATE PER QQ-N-290, .000100/ .000250 THICK.
 GOLD PLATE PER ASTM B488-01, TYPE II, CODE C, .000050/ .000100 THICK.
 SHELL: PASSIVATED PER QQ-P-35.

4. ORDERING INSTRUCTIONS:
 SPECIFY BASE NUMBER FOLLOWED BY DASH NUMBERS INDICATING PIN COUNT AND FLANGE TYPE:

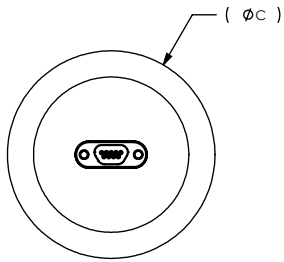
EXAMPLE: SRIVF201-9E

FLANGE STANDARD LETTER DESIGNATION SEE SHEET 2
 CONNECTOR PIN COUNT SEE SHEET 2
 BASE NUMBER

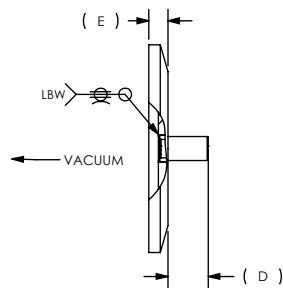
FLANGE SHOWN FOR REFERENCE ONLY
 SEE SHEET 2 FOR FLANGE/CONNECTOR SIZES

UNLESS OTHERWISE SPECIFIED				(321) 254-4067
DIMENSIONING IAW ASME Y14.5M-1994 DIMENSIONS APPLY AFTER PROCESSES DIMENSIONS IAW US CUSTOMARY UNITS .X ± .1, .XX ± .01, .XXX ± .005, ∠ ± .5° .010 MAX OUTSIDE R, .005 MAX INSIDE R 125 RMS SURFACE FINISH		TITLE VACUUM FLANGE ASSY, FEEDTHROUGH MICRO-D		
THIRD ANGLE PROJECTION 		SIZE A	DOCUMENT SRIVF201	REV -
SCALE 1:2		CAGE CODE 3PJY7	SHEET 1	OF 2

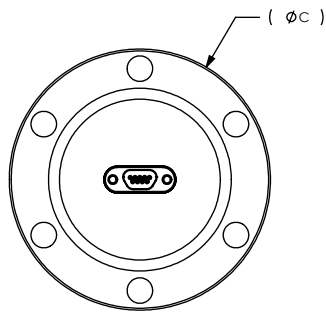
FORM 300067 REV -



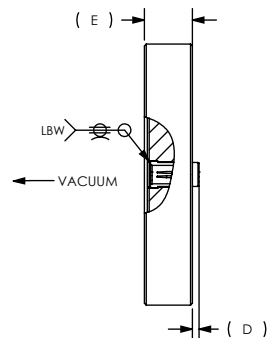
FLANGE TYPE A
FLANGE TYPE B



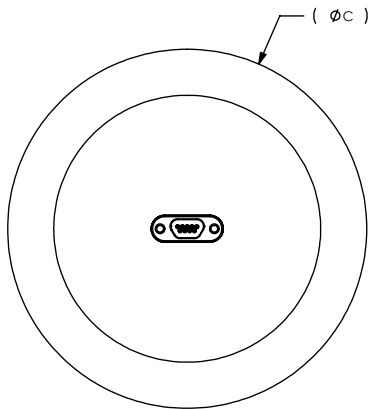
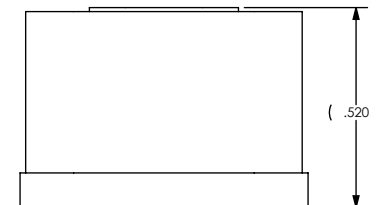
PART NUMBER	FLANGE TYPE	C	D	E	AVAILABLE PIN COUNT
SRIVF201-()A	QF40 OR EQUIVALENT	2.16	.42	.20	9, 15, 21, 25, 31
SRIVF201-()B	QF50 OR EQUIVALENT	2.95	.42	.20	9, 15, 21, 25, 31, 37, 51
SRIVF201-()E	2.75 CONFLAT	2.72	.07	.50	9, 15, 21, 25, 31, 37, 51
SRIVF201-()F	4.50 CONFLAT	4.47	.04	.68	9, 15, 21, 25, 31, 37, 51, 100
SRIVF201-()H	ISO63 CLAW CLAMP	3.74	.20	.47	9, 15, 21, 25, 31, 37, 51, 100



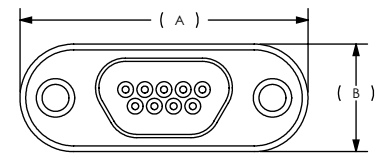
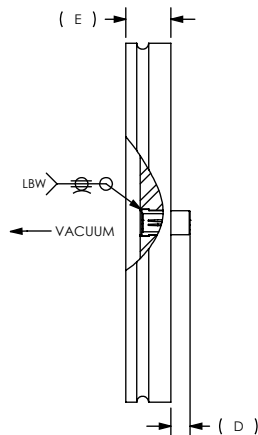
FLANGE TYPE E
FLANGE TYPE F



PIN QTY	A	B
9	.750	.280
15	.900	.280
21	1.050	.280
25	1.150	.280
31	1.300	.280
37	1.450	.280
51	1.400	.323
100	2.011	.367



FLANGE TYPE H



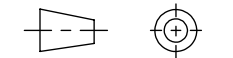
UNLESS OTHERWISE SPECIFIED
 DIMENSIONING IAW ASME Y14.5M-1994
 DIMENSIONS APPLY AFTER PROCESSES
 DIMENSIONS IAW US CUSTOMARY UNITS
 .X ± .1, .XX ± .01, .XXX ± .005, ∠ ± .5°
 .010 MAX OUTSIDE R, .005 MAX INSIDE R
 125 RMS SURFACE FINISH



(321) 254-4067
 WWW.SRIHERMETICS.COM

TITLE VACUUM FLANGE ASSY, FEEDTHROUGH MICRO-D

THIRD ANGLE PROJECTION



SIZE A	DOCUMENT SRIVF201	REV -
SCALE 1:2	CAGE CODE 3PJY7	SHEET 2 OF 2