

8

7

6

5

4

3

2

DOCUMENT SRIVF402

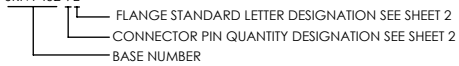
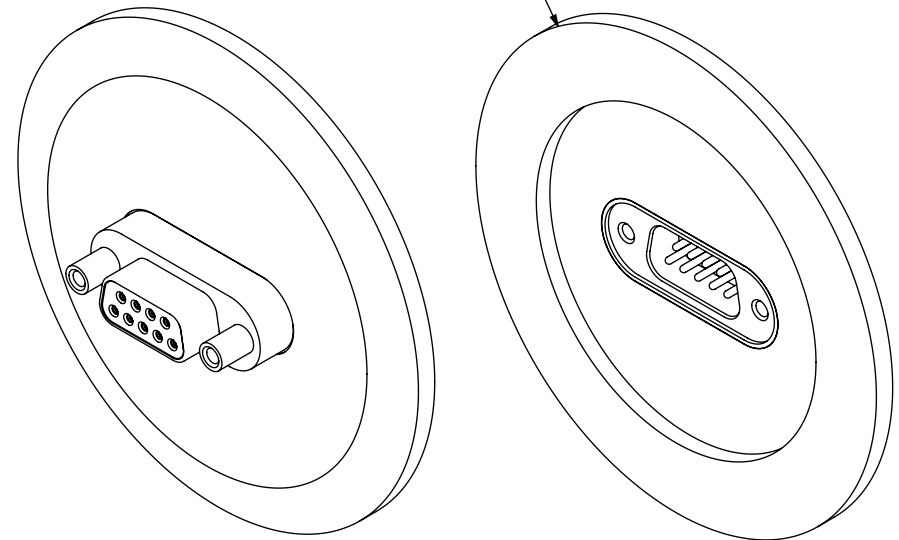
STAINLESS STEEL VACUUM FLANGE W/LASER WELDED DOUBLE-ENDED SUB-D HEADER

REVISIONS			
REV	CHANGE NO.	DATE	CFG APPROVAL
-	INIT RLSE	2/25/2010	J. PETRI

- DOUBLE-ENDED (MALE PLUG/FEMALE RECEPTACLE) CONFIGURATION WITH THE WELD INTERFACE AT THE TOP
- CONFORMS TO MIL-DTL-24308 AND ARE AVAILABLE IN 9, 15, 25, 37, 50 AND 104 COUNT CONTACT CONFIGURATIONS (ARRANGEMENT 1) AND 15, 26, 44, 62, AND 78 CONTACT CONFIGURATIONS (ARRANGEMENT 2).
- INCORPORATES BERYLLIUM-COPPER CONTACTS INDIVIDUALLY SEALED USING CERAMAX® PROPRIETARY CERAMIC TO ESTABLISH A DURABLE HERMETIC SEAL.

1. LEAK RATE: LESS THAN OR EQUAL TO 2X10E-10 CC/SEC H₂ AT ONE ATMOSPHERE DIFFERENTIAL PRESSURE.
TEST TO 1X10E-9 CC/SEC H₂ AT ONE ATMOSPHERE DIFFERENTIAL PRESSURE.
2. MATERIALS:
CONTACTS: BERYLLIUM-COPPER ALLOY 172/173 IN ACCORDANCE WITH ASTM B196/197.
DIELECTRIC: CERAMAX PROPRIETARY CERAMIC.
SHELL: STAINLESS STEEL ALLOY 304L IN ACCORDANCE WITH SAE AMS-QQ-S-763.
VACUUM FLANGE: 304L STAINLESS STEEL
3. FINISH:
CONTACTS: NICKEL PLATE PER QQ-N-290, .000100/ .000250 THICK.
GOLD PLATE PER ASTM B488-01, TYPE III, CODE A, .000050/ .000100 THICK.
SHELL: PASSIVATED PER QQ-P-35.
4. ORDERING INSTRUCTIONS:
SPECIFY BASE NUMBER FOLLOWED BY DASH NUMBERS INDICATING PIN COUNT AND FLANGE TYPE:

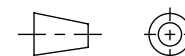
EXAMPLE: SRIVF402-9E

FLANGE SHOWN FOR REFERENCE ONLY
SEE SHEET 2 FOR FLANGE/CONNECTOR SIZES

UNLESS OTHERWISE SPECIFIED

DIMENSIONING IAW ASME Y14.5M-1994
DIMENSIONS APPLY AFTER PROCESSES
DIMENSIONS IAW US CUSTOMARY UNITS
.X ±.1, .XX ±.01, .XXX ±.005, ∠ ±.5°
.010 MAX OUTSIDE R, .005 MAX INSIDE R
125 RMS SURFACE FINISH

THIRD ANGLE PROJECTION

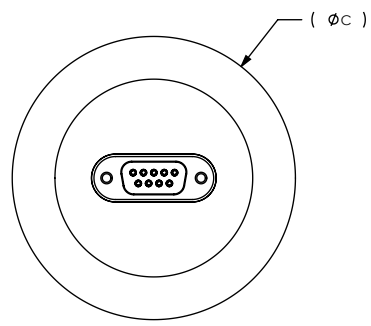


(321) 254-4067

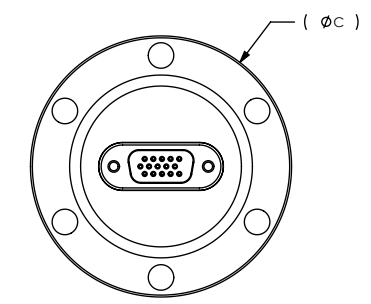
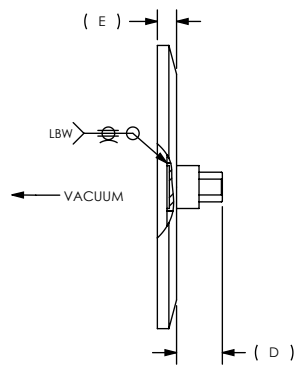
WWW.SRIHERMETICS.COM

TITLE
VACUUM FLANGE ASSY, SUB-D, PLUG/RCPT

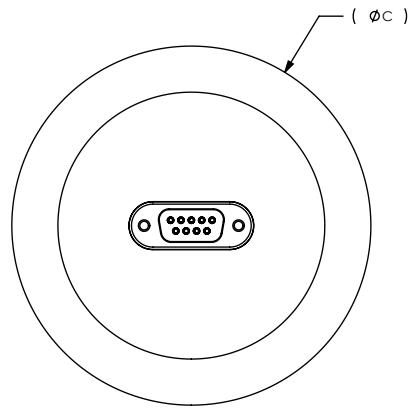
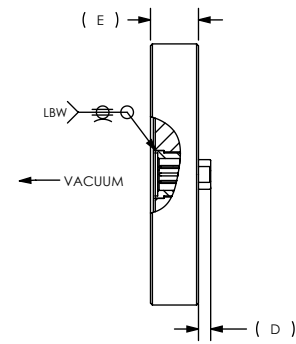
SIZE A	DOCUMENT SRIVF402	REV -
SCALE 1:2	CAGE CODE 3PJY7	SHEET 1 OF 2



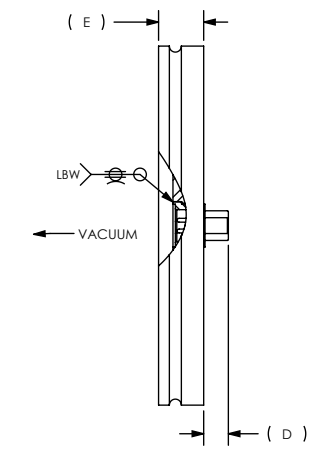
FLANGE TYPE A
FLANGE TYPE B



FLANGE TYPE E
FLANGE TYPE F
FLANGE TYPE G
FLANGE TYPE K

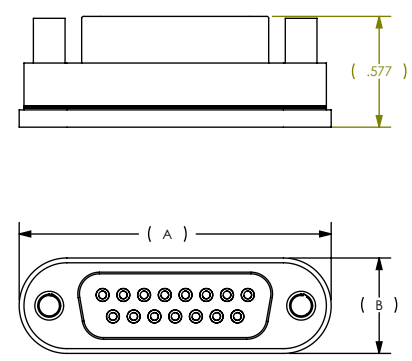


FLANGE TYPE H
FLANGE TYPE J



PART NUMBER	FLANGE TYPE	C	D	E	AVAILABLE PIN COUNT ARRANGEMENT 1	AVAILABLE PIN COUNT ARRANGEMENT 2
SRIVF402-()A	QF40 OR EQUIVALENT	2.16	.48	.20	9	15
SRIVF402-()B	QF50 OR EQUIVALENT	2.95	.48	.20	9, 15	15, 26
SRIVF402-()E	2.75 CONFLAT	2.72	.13	.50	9	15
SRIVF402-()F	4.50 CONFLAT	4.47	.09	.68	9, 15, 25	15, 26, 44
SRIVF402-()G	6.00 CONFLAT	5.97	.09	.78	9, 15, 25, 37, 50, 104	15, 26, 44, 62, 78
SRIVF402-()K	6.75 CONFLAT	6.72	.03	.84	9, 15, 25, 37, 50, 104	15, 26, 44, 62, 78
SRIVF402-()H	ISO63 CLAW CLAMP	3.74	.257	.47	9, 15, 25	15, 26, 44
SRIVF402-()J	ISO100 CLAW CLAMP	5.12	.102	.47	9, 15, 25, 37, 50, 104	15, 26, 44, 62, 78

PIN QTY DESIGNATION	PIN QTY	MIL-DTL-24308 ARRANGEMENT	CONTACT SIZE	A	B
1	9	1	20	1.297	.497
2	15	2	22D	1.297	.497
3	15	1	20	1.625	.497
4	26	2	22D	1.625	.497
5	25	1	20	2.165	.497
6	44	2	22D	2.165	.497
7	37	1	20	2.814	.497
8	62	2	22D	2.814	.497
9	50	1	20	2.720	.609
10	78	2	22D	2.720	.609
11	104	1	22D	2.814	.721



UNLESS OTHERWISE SPECIFIED
 DIMENSIONING IAW ASME Y14.5M-1994
 DIMENSIONS APPLY AFTER PROCESSES
 DIMENSIONS IAW US CUSTOMARY UNITS
 .X ± .1, .XX ± .01, .XXX ± .005, ∠ ± .5°
 .010 MAX OUTSIDE R, .005 MAX INSIDE R
 125 RMS SURFACE FINISH

THIRD ANGLE PROJECTION

SRI HERMETICS (321) 254-4067
 WWW.SRIHERMETICS.COM

TITLE: VACUUM FLANGE ASSY, SUB-D, PLUG/RCPT

SIZE: A DOCUMENT SRIVF402 REV: -

SCALE: 1:2 CAGE CODE 3PJY7 SHEET 2 OF 2