

# STAINLESS STEEL VACUUM FLANGE W/LASER WELDED DOUBLE-ENDED POWER SUB-C HEADER

- DOUBLE-ENDED (RCPT/RCPT) CONFIGURATION WITH THE WELD INTERFACE AT THE TOP
- INCORPORATES BERYLLIUM-COPPER CONTACTS INDIVIDUALLY SEALED USING CERAMAX® PROPRIETARY CERAMIC TO ESTABLISH A DURABLE HERMETIC SEAL.

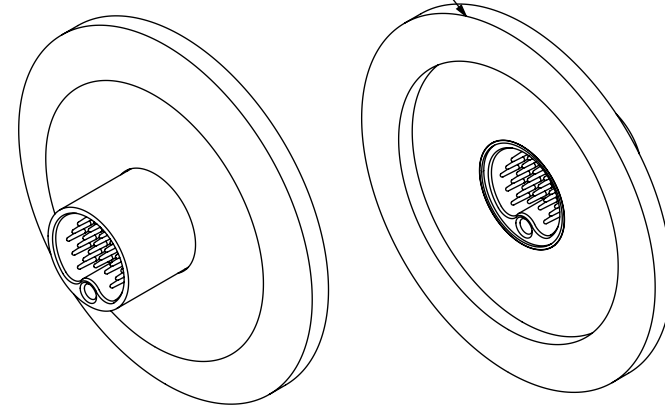
REVISIONS			
REV	CHANGE NO.	DATE	CFG APPROVAL
-	INIT RLSE	2/25/2010	J. PETRI
A	DCN001153	4/29/2013	J. PETRI
B	DCN001339	4/14/2014	J. PETRI
C	DCN001422	8/20/2014	J. PETRI


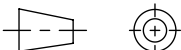
1. LEAK RATE: LESS THAN OR EQUAL TO 2X10E-10 CC/SEC He AT ONE ATMOSPHERE DIFFERENTIAL PRESSURE.  
TEST TO 1X10E-9 CC/SEC He AT ONE ATMOSPHERE DIFFERENTIAL PRESSURE.
2. MATERIALS:  
CONTACTS: BERYLLIUM-COPPER ALLOY 172/173 IN ACCORDANCE WITH ASTM B196/197.  
DIELECTRIC: CERAMAX PROPRIETARY CERAMIC.  
SHELL: STAINLESS STEEL ALLOY 304L IN ACCORDANCE WITH SAE AMS-QQ-S-763.  
VACUUM FLANGE: 304L STAINLESS STEEL
3. FINISH:  
CONTACTS: NICKEL PLATE PER QQ-N-290, .000100/ .000250 THICK.  
GOLD PLATE PER ASTM B488-01, TYPE II, CODE C, .000050/ .000100 THICK.  
SHELL: PASSIVATED PER QQ-P-35.
4. ORDERING INSTRUCTIONS:  
SPECIFY BASE NUMBER FOLLOWED BY DASH NUMBERS INDICATING PIN COUNT AND FLANGE TYPE:

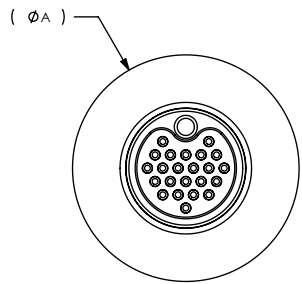
EXAMPLE: SRIVF301-1D

- FLANGE STANDARD LETTER DESIGNATION SEE SHEET 2
- CONNECTOR PIN QUANTITY DESIGNATION SEE SHEET 2
- BASE NUMBER

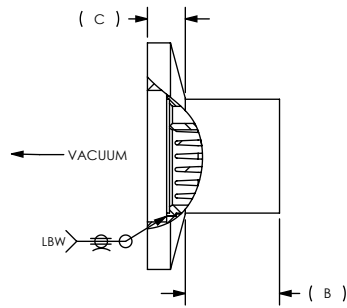
FLANGE SHOWN FOR REFERENCE ONLY  
SEE SHEET 2 FOR FLANGE/CONNECTOR SIZES



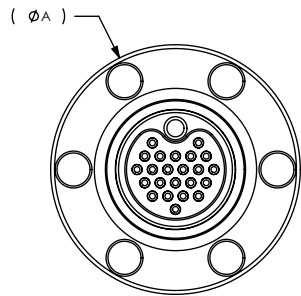
UNLESS OTHERWISE SPECIFIED		 (321) 254-4067 <a href="http://WWW.SRIHERMETICS.COM">WWW.SRIHERMETICS.COM</a>	
DIMENSIONING IAW ASME Y14.5M-1994 DIMENSIONS APPLY AFTER PROCESSES DIMENSIONS IAW US CUSTOMARY UNITS .X ± .1, .XX ± .01, .XXX ± .005, ∠ ± .5° .010 MAX OUTSIDE R, .005 MAX INSIDE R 125 RMS SURFACE FINISH		TITLE VACUUM FLANGE ASSY, SUB-C, RCPT/RCPT	
THIRD ANGLE PROJECTION		SIZE A	DOCUMENT SRIVF301
		SCALE 1:1	REV C
		CAGE CODE 3PJY7	SHEET 1 OF 2



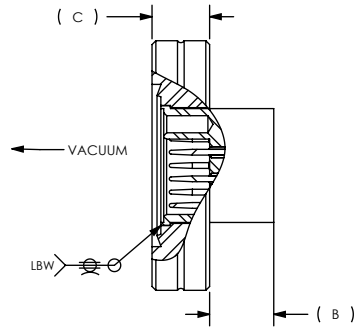
FLANGE TYPE A  
FLANGE TYPE C  
FLANGE TYPE K



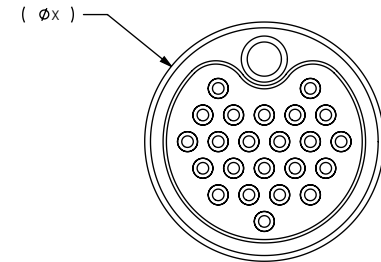
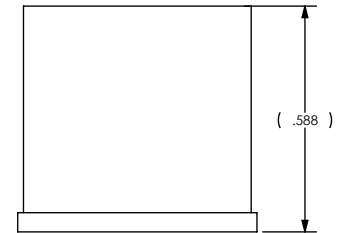
PART NUMBER	FLANGE TYPE	A	B	C	AVAILABLE PIN COUNT
SRIVF301-( )A	QF40 OR EQUIVALENT	2.16	.49	.20	9, 23, 37, 60
SRIVF301-( )C	QF16 OR EQUIVALENT	1.18	.49	.20	9, 23
SRIVF301-( )D	1.33 CONFLAT	1.30	.33	.30	9, 23
SRIVF301-( )E	2.75 CONFLAT	2.72	.14	.50	9, 23, 37, 60
SRIVF301-( )K	NW25 OR EQUIVALENT	1.57	.49	.20	9, 23, 37



FLANGE TYPE D  
FLANGE TYPE E



PIN QTY DESIGNATION	PIN QTY	(ϕX)
1	9	.623
2	23	.623
3	37	.75
4	60	1.00

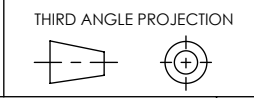


UNLESS OTHERWISE SPECIFIED  
DIMENSIONING IAW ASME Y14.5M-1994  
DIMENSIONS APPLY AFTER PROCESSES  
DIMENSIONS IAW US CUSTOMARY UNITS  
.X ± .1, .XX ± .01, .XXX ± .005, ∠ ± .5°  
.010 MAX OUTSIDE R, .005 MAX INSIDE R  
125 RMS SURFACE FINISH



(321) 254-4067  
WWW.SRIHERMETICS.COM

TITLE  
VACUUM FLANGE ASSY, SUB-C, RCPT/RCPT



SIZE A DOCUMENT SRIVF301 REV C  
SCALE 1:1 CAGE CODE 3PJY7 SHEET 2 OF 2