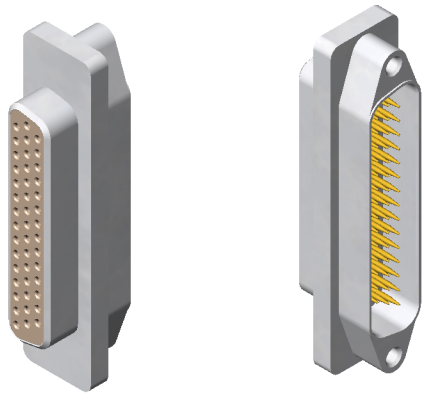


STAINLESS STEEL RECTANGULAR FLANGE DOUBLE-ENDED SUB-D CONNECTOR

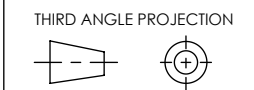
REVISIONS			
REV	DCN	REVISION DATE	RELEASE APPROVAL
-	INIT RLSE	5-20-2014	<i>[Signature]</i>

- DOUBLE-ENDED (MALE PLUG/FEMALE RECEPTACLE)
 - CONFORMS TO MIL-DTL-24308, 44 CONTACT CONFIGURATION (ARRANGEMENT 2).
 - INCORPORATES BERYLLIUM-COPPER CONTACTS INDIVIDUALLY SEALED USING CERAMAX® PROPRIETARY CERAMIC TO ESTABLISH A DURABLE HERMETIC SEAL.
-
1. LEAK RATE: LESS THAN OR EQUAL TO 2X10E-10 CC/SEC He AT ONE ATMOSPHERE DIFFERENTIAL PRESSURE. TEST TO 1X10E-9 CC/SEC He AT ONE ATMOSPHERE DIFFERENTIAL PRESSURE.
 2. INTERFACE AND MOUNTING HOLES IN ACCORDANCE WITH MIL-DTL-24308/1.
 3. MATERIALS:
 CONTACT: BERYLLIUM-COPPER ALLOY 172/173 IN ACCORDANCE WITH ASTM B196/197.
 DIELECTRIC: CERAMAX PROPRIETARY CERAMIC.
 INSULATOR: POLYETHERETHERKETONE (PEEK)
 SHELL: STAINLESS STEEL ALLOY 304L IN ACCORDANCE WITH SAE AMS-QQ-S-763.
 4. FINISH:
 CONTACTS: NICKEL PLATE PER QQ-N-290, .000100/ .000250 THICK.
 GOLD PLATE PER ASTM B488, TYPE III, CODE A, .000050/ .000100 THICK.
 SHELL: PASSIVATED PER QQ-P-35.
 5. ORDERING NUMBER SRISD5015-2-44

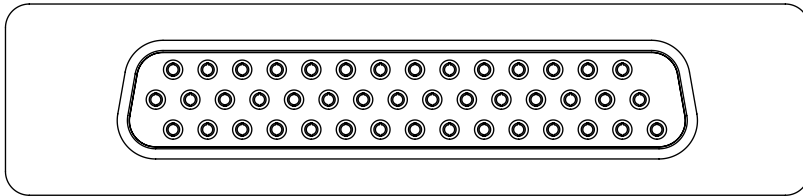
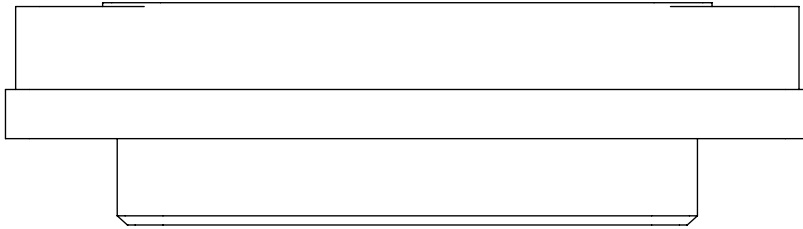
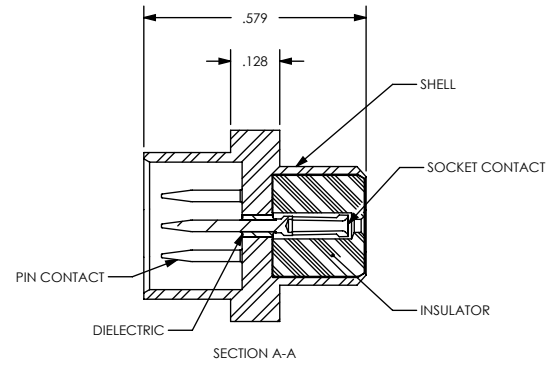
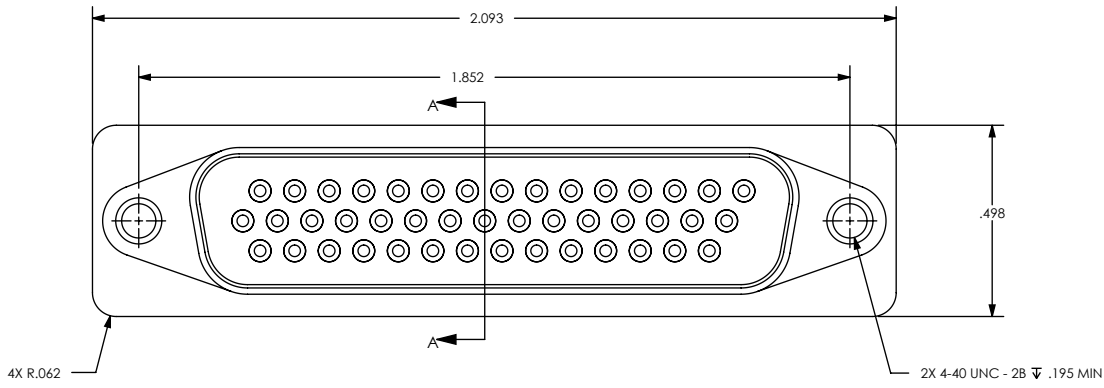


UNLESS OTHERWISE SPECIFIED
 DIMENSIONING IAW ASME Y14.5M-1994
 DIMENSIONS APPLY AFTER PROCESSES
 DIMENSIONS IAW US CUSTOMARY UNITS
 .X ±.1, .XX ±.01, .XXX ±.005, ∠ ±.5°
 .010 MAX OUTSIDE R, .005 MAX INSIDE R
 125 RMS SURFACE FINISH

SRI HERMETICS (321) 254-4067
 WWW.SRIHERMETICS.COM



TITLE		CONNECTOR, SUB-D RECTANGULAR FLANGE, DBL ENDED	
SIZE	DOCUMENT	SRISD5015	REV -
SCALE	CAGE CODE	3PJY7	SHEET 1 OF 2



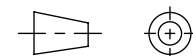
UNLESS OTHERWISE SPECIFIED
 DIMENSIONING IAW ASME Y14.5M-1994
 DIMENSIONS APPLY AFTER PROCESSES
 DIMENSIONS IAW US CUSTOMARY UNITS
 .X ±.1, .XX ±.01, .XXX ±.005, ∠ ±.5°
 .010 MAX OUTSIDE R, .005 MAX INSIDE R
 125 RMS SURFACE FINISH



(321) 254-4067
 WWW.SRIHERMETICS.COM

TITLE
 CONNECTOR, SUB-D RECTANGULAR FLANGE, DBL ENDED

THIRD ANGLE PROJECTION



SIZE A	DOCUMENT SRISD5015	REV -
SCALE 2:1	CAGE CODE 3PJY7	SHEET 2 OF 2