

**ALUMINUM COMPATIBLE LASER WELDABLE SUB-D, DOUBLE-ENDED PLUG CONNECTOR (SOCKET CONTACTS)**

REVISIONS			
REV	CHANGE NO.	DATE	CFG APPROVAL
-	INIT RLSE	2009-09-09	J. PETRI

- DOUBLE-ENDED CONFIGURATION WITH THE WELD INTERFACE AT THE MIDSECTION OF THE CONNECTOR.
- DESIGNED TO LASER WELD INTO AN ELECTRONIC CHASSIS WALL OR FLANGE.
- CONFORMS TO MIL-DTL-24308 (SIZE 20 CONTACT) AND ARE AVAILABLE IN 9, 15, 25, 37 AND 50 COUNT CONTACT CONFIGURATIONS.
- INCORPORATES BERYLLIUM-COPPER CONTACTS INDIVIDUALLY SEALED USING CERAMAX® PROPRIETARY CERAMIC TO ESTABLISH A DURABLE HERMETIC SEAL.

1. LEAK RATE: LESS THAN OR EQUAL TO 2X10E-10 CC/SEC He AT ONE ATMOSPHERE DIFFERENTIAL PRESSURE. TEST TO 1X10E-9 CC/SEC He AT ONE ATMOSPHERE DIFFERENTIAL PRESSURE.
2. INTERFACE AND MOUNTING HOLES IN ACCORDANCE WITH MIL-DTL-24308/1.
3. MATERIALS:  
CONTACT: BERYLLIUM-COPPER ALLOY 172/173 IN ACCORDANCE WITH ASTM B196/197.  
DIELECTRIC: CERAMAX PROPRIETARY CERAMIC.  
SHELL: ALUMINUM ALLOY 4032 IN ACCORDANCE WITH ASTM B247  
INSULATOR: POLYETHERETHERKETONE (PEEK)  
THREADED INSERTS: IN ACCORDANCE WITH NAS1130-04-15.

4. FINISH:  
CONTACTS: NICKEL PLATE PER SAE-AMS-QQ-N-290, .000100/ .000250 THICK.  
GOLD PLATE PER ASTM B488-01, TYPE III, CODE A, .000050/ .000100 THICK.

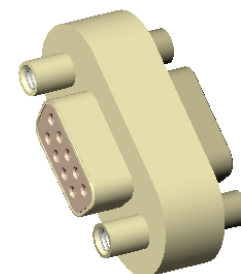
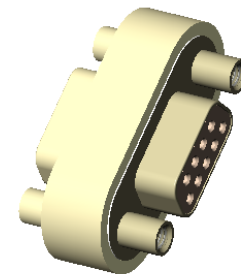
SHELL: CHEMICAL CONVERSION COAT IN ACCORDANCE WITH MIL-DTL-5541, TYPE 1, CLASS 1A.

5. ORDERING INSTRUCTIONS:  
SPECIFY BASE NUMBER FOLLOWED BY DASH NUMBER INDICATING PIN COUNT AND CONFIGURATION (SEE SHEET 2):

EXAMPLE: SRISD5006 - 25

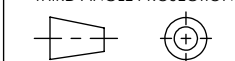
PIN COUNT = 25 (SEE TAB)

BASE NUMBER



UNLESS OTHERWISE SPECIFIED  
DIMENSIONING IAW ASME Y14.5M-1994  
DIMENSIONS APPLY AFTER PROCESSES  
DIMENSIONS IAW US CUSTOMARY UNITS  
X ±.1, .XX ±.01, .XXX ±.005, ∠ ±.5°  
.010 MAX OUTSIDE R, .005 MAX INSIDE R  
125 RMS SURFACE FINISH

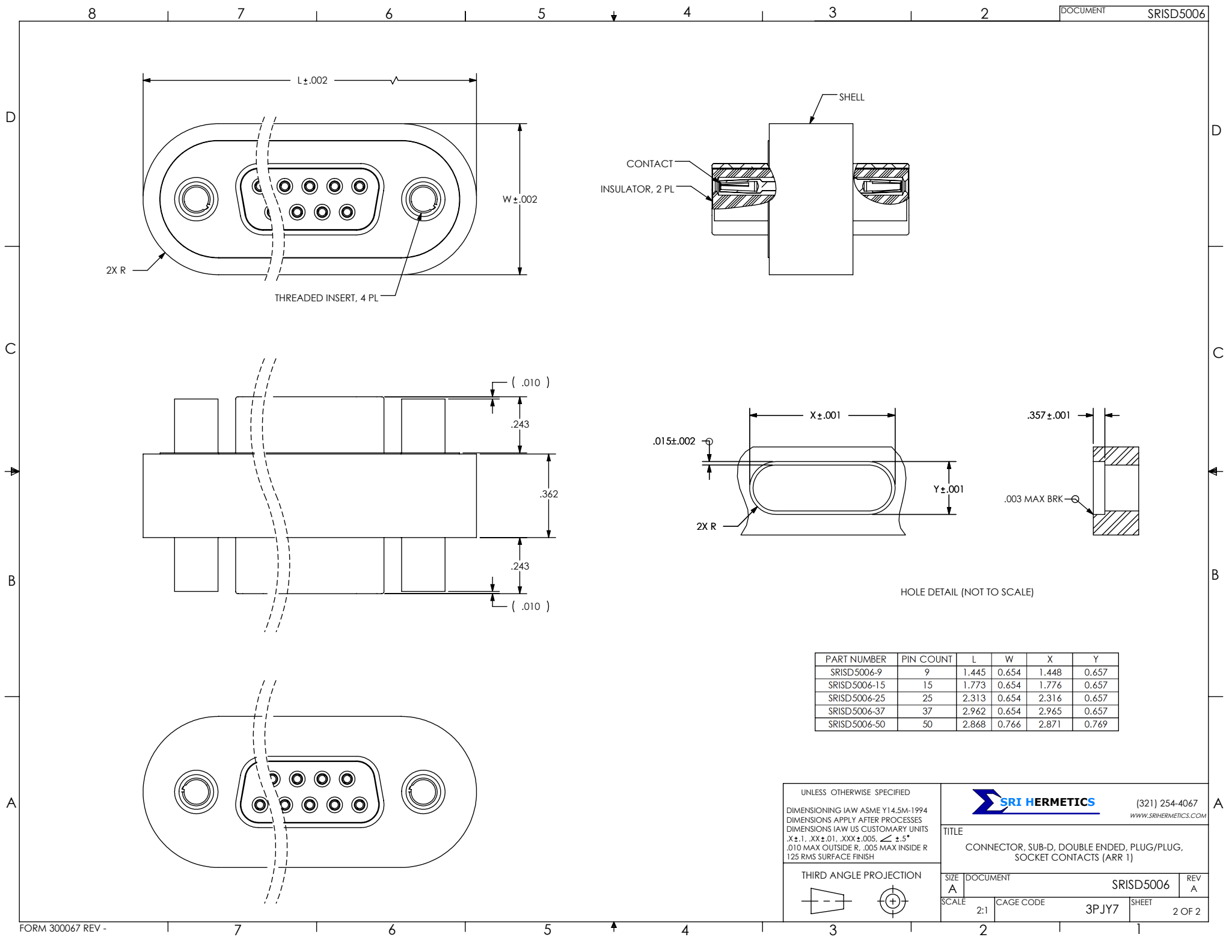
THIRD ANGLE PROJECTION



(321) 254-4067  
WWW.SRIHERMETICS.COM

TITLE  
CONNECTOR, SUB-D, DOUBLE ENDED, PLUG/PLUG,  
SOCKET CONTACTS (ARR 1)

SIZE	DOCUMENT	SRISD5006	REV
A			A
SCALE	1:1	CAGE CODE	3PJY7
		SHEET	1 OF 2



PART NUMBER	PIN COUNT	L	W	X	Y
SRISD5006-9	9	1.445	0.654	1.448	0.657
SRISD5006-15	15	1.773	0.654	1.776	0.657
SRISD5006-25	25	2.313	0.654	2.316	0.657
SRISD5006-37	37	2.962	0.654	2.965	0.657
SRISD5006-50	50	2.868	0.766	2.871	0.769

UNLESS OTHERWISE SPECIFIED  
 DIMENSIONING IAW ASME Y14.5M-1994  
 DIMENSIONS APPLY AFTER PROCESSES  
 DIMENSIONS IAW US CUSTOMARY UNITS  
 $.X \pm .1, .XX \pm .01, .XXX \pm .005, \angle \pm .5^\circ$   
 $.010$  MAX OUTSIDE R,  $.005$  MAX INSIDE R  
 125 RMS SURFACE FINISH

THIRD ANGLE PROJECTION

**SRI HERMETICS** (321) 254-4067  
 WWW.SRIHERMETICS.COM

TITLE  
 CONNECTOR, SUB-D, DOUBLE ENDED, PLUG/PLUG,  
 SOCKET CONTACTS (ARR 1)

SIZE A	DOCUMENT SRISD5006	REV A
SCALE 2:1	CAGE CODE 3PJY7	SHEET 2 OF 2