

STAINLESS STEEL O-RING PANEL MOUNT POWER SUB-D CONNECTOR

REVISIONS			
REV	CHANGE NO.	DATE	CFG APPROVAL
-	INIT RLSE	2010-01-22	J. PETRI
A	DCN000799	3/22/2011	J. PETRI
B	DCN001540	4/30/2015	

- DESIGNED FOR PANEL-MOUNT WITH AN O-RING SEAL
- INCORPORATES BERYLLIUM-COPPER CONTACTS INDIVIDUALLY SEALED USING CERAMAX® PROPRIETARY CERAMIC TO ESTABLISH A DURABLE HERMETIC SEAL.
- THE INTERNAL PINS CONFIGURED TO ACCEPT SOLDERCUPS (P/N 120029-1) FOR WIRE ATTACH.

1. LEAK RATE: LESS THAN OR EQUAL TO 1×10^{-9} CC/SEC He AT ONE ATMOSPHERE DIFFERENTIAL PRESSURE.
2. INTERFACE AND MOUNTING HOLES IN ACCORDANCE WITH MIL-DTL-24308/3.

3. MATERIALS:
 CONTACT: BERYLLIUM-COPPER ALLOY 172/173 IN ACCORDANCE WITH ASTM B196/197. SOLDERCUP ACCEPTS UP TO 12 AWG WIRE. $\triangle B$
 DIELECTRIC: CERAMAX PROPRIETARY CERAMIC.
 SHELL: STAINLESS STEEL ALLOY 304L IN ACCORDANCE WITH SAE AMS-QQ-S-763.
 JACKING HARDWARE: 300-SERIES STAINLESS STEEL.
 O-RING GASKET: FLUOROCARBON RUBBER.

4. FINISH:
 CONTACTS: NICKEL PLATE PER AMS QQ-N-290, .000100/ .000250 THICK.
 GOLD PLATE PER ASTM B488-11, TYPE III, CODE A, .000050/ .000100 THICK.
 SHELL: PASSIVATED PER QQ-P-35.

5. RECOMMENDED INSTALLATION TORQUE FOR JACKING HARDWARE: 3-5 LB-IN.

6. ORDERING INSTRUCTIONS:
 SPECIFY BASE NUMBER FOLLOWED BY DASH NUMBER INDICATING CONTACT ARRANGEMENT (SEE SHEETS 2-3):

EXAMPLE: SRISD2003 - 2W2

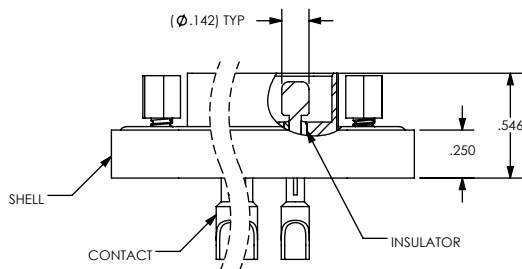
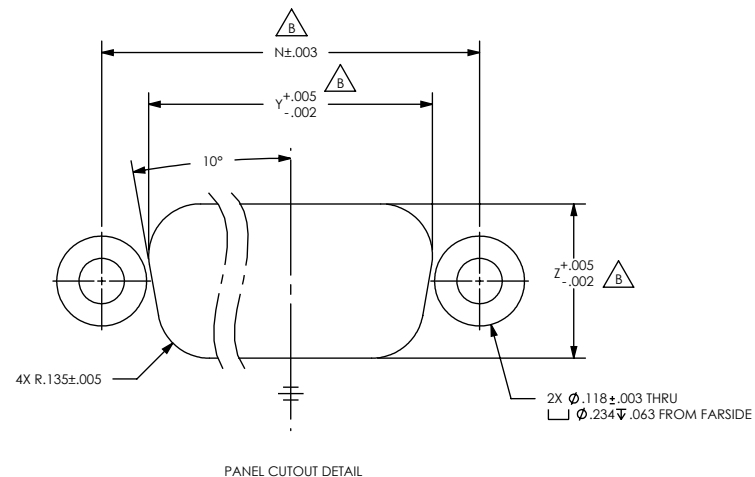
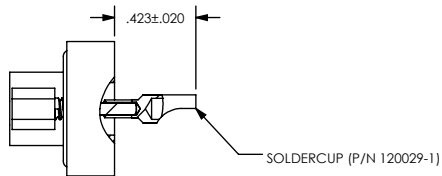
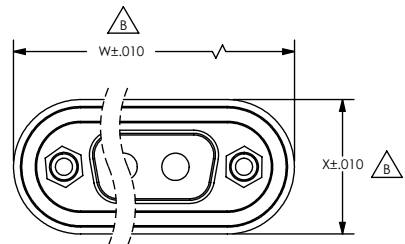
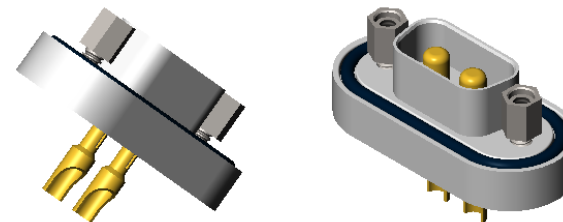
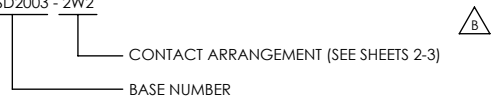


TABLE 1

SHELL SIZE	W	X	Y	Z	N	GASKET SIZE A5-568A
1	1.509	.700	.739	.402	.984	-22
2	1.803	.700	1.067	.402	1.312	-25
3	2.491	.700	1.607	.402	1.852	-30
4	3.080	.700	2.255	.402	2.500	-33
5	3.016	.812	2.152	.514	2.406	-33

UNLESS OTHERWISE SPECIFIED DIMENSIONING IAW ASME Y14.5M-1994 DIMENSIONS APPLY AFTER PROCESSES DIMENSIONS IAW US CUSTOMARY UNITS X±.1, .XX±.01, .XXX±.005, $\angle \pm .5^\circ$.010 MAX OUTSIDE R, .005 MAX INSIDE R 125 RMS SURFACE FINISH		(321) 254-4067 WWW.SRIHERMETICS.COM	
THIRD ANGLE PROJECTION		TITLE CONNECTOR, SUB-D, POWER, O-RING PANEL MOUNT	
SIZE A	DOCUMENT SRISD2003	REV B	
SCALE 1:1	CAGE CODE 3PJY7	SHEET 1 OF 3	

SHELL SIZE 1



SRISD2003-1W1



SRISD2003-5W1



SRISD2003-2W2

SHELL SIZE 2



SRISD2003-3W3



SRISD2003-7W2



SRISD2003-11W1

SHELL SIZE 3



SRISD2003-5W5



SRISD2003-9W4



SRISD2003-13W3

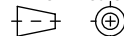


SRISD2003-17W2



SRISD2003-21W1

DIMENSIONING IAW ASME Y14.5M-1994
DIMENSIONS APPLY AFTER PROCESSES
DIMENSIONS IAW US CUSTOMARY UNITS
X ± .1, XX ± .01, XXX ± .005, ∠ ± .5°
.010 MAX OUTSIDE R, .005 MAX INSIDE R
63 RMS SURFACE FINISH
THIRD ANGLE PROJECTION



DO NOT SCALE DRAWING



(321) 254-4067
www.srihermetics.com

TITLE
CONNECTOR, SUB-D, POWER, O-RING PANEL MOUNT

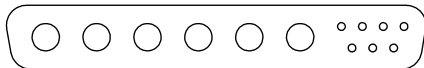
SIZE DOCUMENT SRISD2003 REV B

SCALE 1:1 CAGE CODE 3PJY7 SHEET 2 OF 3

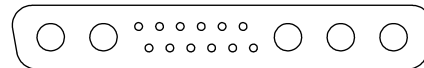
SHELL SIZE 4



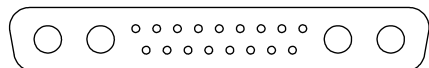
SRISD2003-8W8



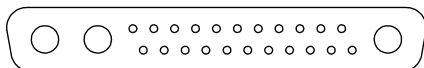
SRISD2003-13W6



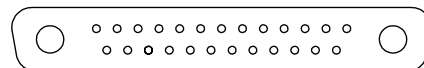
SRISD2003-17W5



SRISD2003-21WA4



SRISD2003-25W3

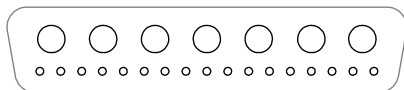


SRISD2003-27W2

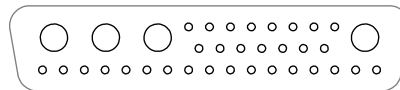


SRISD2003-7W7

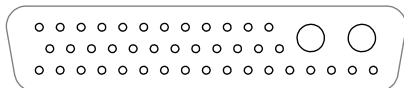
SHELL SIZE 5



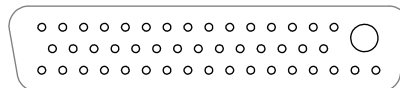
SRISD2003-24W7



SRISD2003-36W4

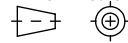


SRISD2003-43W2



SRISD2003-47W1

DIMENSIONING LAW ASME Y14.5M-1994
 DIMENSIONS APPLY AFTER PROCESSES
 DIMENSIONS LAW US CUSTOMARY UNITS
 X ± .1, XX ± .01, XXX ± .005, < 5°
 .010 MAX OUTSIDE R, .005 MAX INSIDE R
 63 RMS SURFACE FINISH
 THIRD ANGLE PROJECTION



(321) 254-4067
 www.srihermetics.com

TITLE
 CONNECTOR, SUB-D, POWER, O-RING PANEL MOUNT

SIZE DOCUMENT SRISD2003 REV B

DO NOT SCALE DRAWING

SCALE 1:1 CAGE CODE 3PJY7 SHEET 3 OF 3