

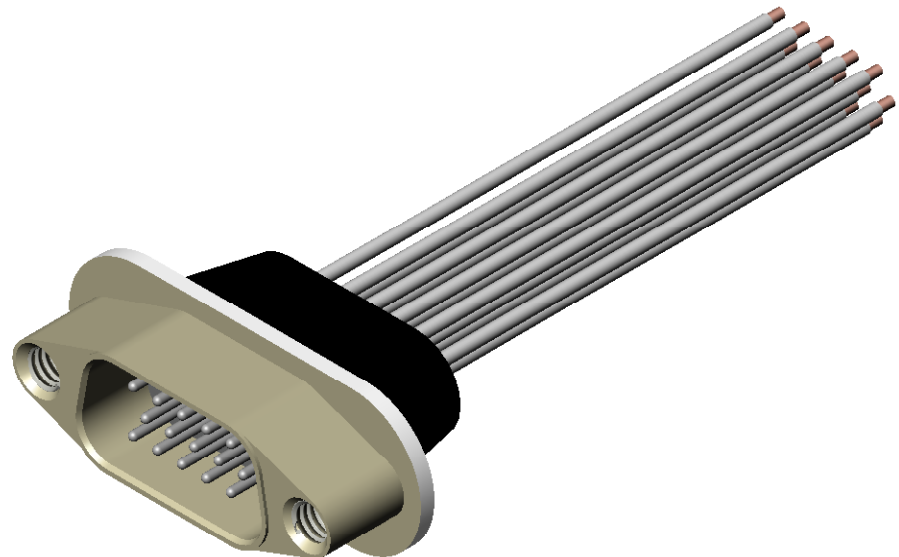
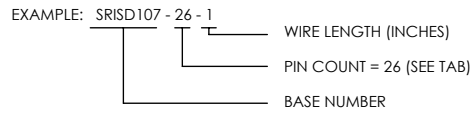
REVISIONS			
REV	CHANGE NO.	DATE	CFG APPROVAL
-	INIT RLSE	2007-07-03	J. PETRI


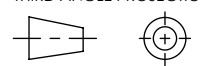
ALUMINUM COMPATIBLE LASER WELDABLE SUB-D CONNECTOR

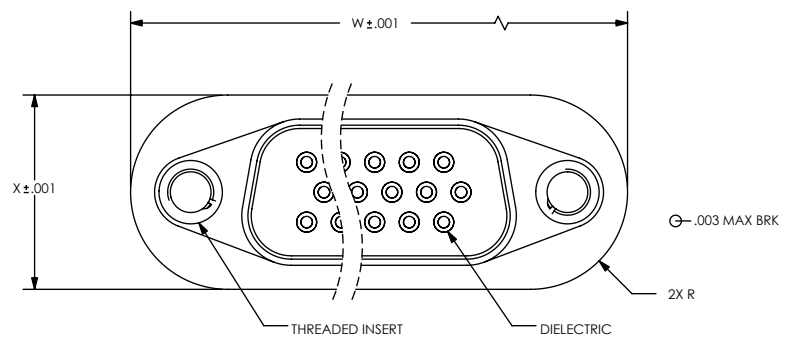
- TRADITIONAL CONFIGURATION WITH THE FLANGE LOCATED AT THE MIDSECTION OF THE CONNECTOR
- DESIGNED TO LASER WELD INTO AN ELECTRONIC CHASSIS WALL
- CONFORMS TO MIL-DTL-24308, ARRANGEMENT 2 PIN COUNTS 15, 26, 62, 78 AND ARRANGEMENT 1 PIN COUNT 104 CONTACT CONFIGURATIONS.
- INCORPORATES BERYLLIUM-COPPER CONTACTS INDIVIDUALLY SEALED USING CERAMAX® PROPRIETARY CERAMIC TO ESTABLISH A DURABLE HERMETIC SEAL.
- INTERNAL PINS CONFIGURED WITH INSULATED WIRE.

1. LEAK RATE: LESS THAN OR EQUAL TO 1X10E-9 CC/SEC He AT ONE ATMOSPHERE DIFFERENTIAL PRESSURE.
2. INTERFACE AND MOUNTING HOLES IN ACCORDANCE WITH MIL-DTL-24308/2.
3. MATERIALS:
 CONTACT: BERYLLIUM-COPPER ALLOY 172/173 IN ACCORDANCE WITH ASTM B196/197.
 DIELECTRIC: CERAMAX PROPRIETARY CERAMIC.
 SHELL: ALUMINUM ALLOY 4032 IN ACCORDANCE WITH ASTM B247.
 THREADED INSERTS: IN ACCORDANCE WITH NAS 1130-04-15.
 POTTING: EPOXY
 WIRE: 7/30 STRAND, 22 AWG, TYPE E (PTFE) IN ACCORDANCE WITH MIL-W-16878. COLOR CODED IN ACCORDANCE WITH MIL-STD-681.
4. FINISH:
 CONTACTS: NICKEL PLATE PER QQ-N-290, .000100/.000250 THICK.
 GOLD PLATE PER ASTM B488, TYPE III, CODE A, .000050/.000100 THICK.
 PLATE ENTIRE EXPOSED PIN, BOTH ENDS.

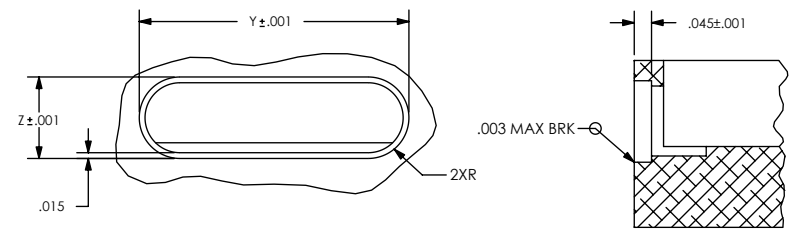
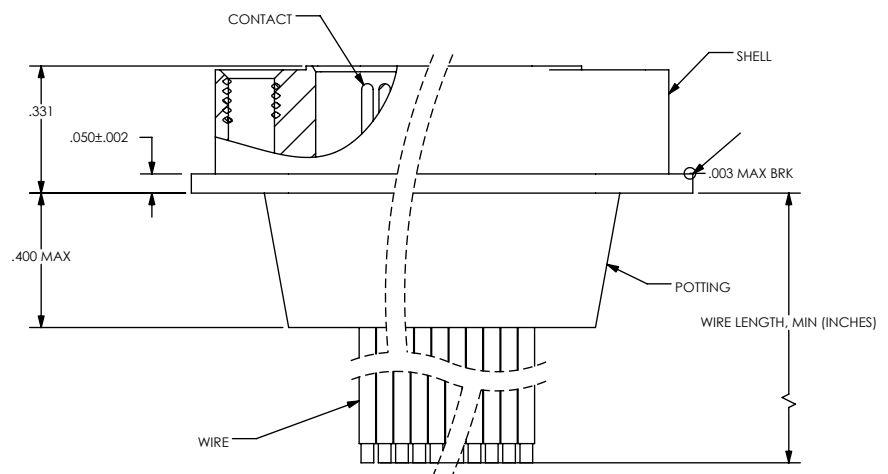
 SHELL: CHEMICAL CONVERSION COAT IN ACCORDANCE WITH MIL-C-5541, CLASS CL1A.
5. ORDERING INSTRUCTIONS:
 SPECIFY BASE NUMBER FOLLOWED BY DASH NUMBERS INDICATING PIN COUNT AND WIRE LENGTH:



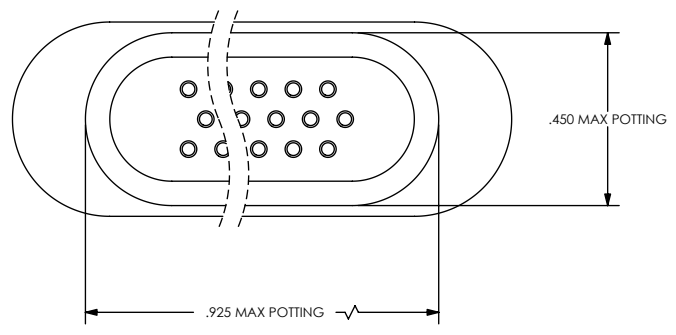
UNLESS OTHERWISE SPECIFIED		 (321) 254-4067 WWW.SRIHERMETICS.COM	
DIMENSIONING IAW ASME Y14.5M-1994 DIMENSIONS APPLY AFTER PROCESSES DIMENSIONS IAW US CUSTOMARY UNITS .X ± .1, .XX ± .01, .XXX ± .005, ∠ ± .5° .010 MAX OUTSIDE R, .005 MAX INSIDE R 125 RMS SURFACE FINISH			
THIRD ANGLE PROJECTION		TITLE	
		CONNECTOR, SUB-D, DOUBLE DENSITY, MF AC (WIRED)	
SIZE	DOCUMENT	SRISD107	REV
A			-
SCALE	CAGE CODE	3PJY7	SHEET
2:1			1 OF 2



NUMBER OF CONTACTS	W	X	Y	Z
15	1.297	0.506	1.300	0.509
26	1.625	0.506	1.628	0.509
44	2.165	0.506	2.168	0.509
62	2.814	0.506	2.817	0.509
78	2.720	0.618	2.723	0.621
104	2.814	0.730	2.818	0.733



HOLE DETAIL



UNLESS OTHERWISE SPECIFIED
 DIMENSIONING IAW ASME Y14.5M-1994
 DIMENSIONS APPLY AFTER PROCESSES
 DIMENSIONS IAW US CUSTOMARY UNITS
 .X ± .1, .XX ± .01, .XXX ± .005, ∠ ± .5°
 .010 MAX OUTSIDE R, .005 MAX INSIDE R
 125 RMS SURFACE FINISH

		(321) 254-4067	
		WWW.SRIHERMETICS.COM	
TITLE			
CONNECTOR, SUB-D, DOUBLE DENSITY, MF AC (WIRED)			
SIZE	DOCUMENT	SRISD107	REV
A			-
SCALE	CAGE CODE	3PJY7	SHEET
2:1			2 OF 2

