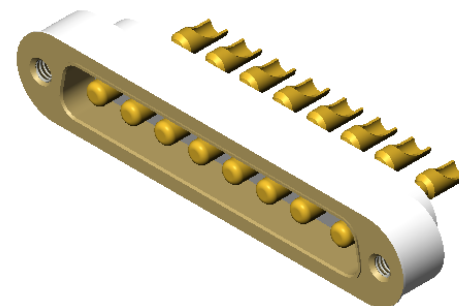
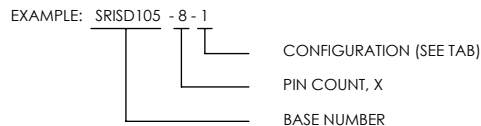


# ALUMINUM COMPATIBLE LASER WELDABLE POWER SUB-D CONNECTOR

- CONFIGURATION WITH THE FLANGE LOCATED AT THE TOP OF THE CONNECTOR
- DESIGNED TO LASER WELD INTO AN ELECTRONIC CHASSIS WALL
- CONFORMS TO MIL-DTL-24308 (SIZE 20 CONTACT) AND IS AVAILABLE IN 3, 5, AND 8 PIN COUNT CONFIGURATIONS
- INCORPORATES BERYLLIUM-COPPER CONTACTS INDIVIDUALLY SEALED USING CERAMAX® PROPRIETARY CERAMIC TO ESTABLISH A DURABLE HERMETIC SEAL
- THE INTERNAL PINS CONFIGURED TO ACCEPT SOLDERCUPS (P/N 120029-1) FOR WIRE ATTACH

REVISIONS			
REV	CHANGE NO.	DATE	APPROVED
-	INIT RLSE	05-09-06	J. PETRI
A	DCN000141	6/6/2006	J. PETRI
B	DCN000457	3/18/2009	J. PETRI
C	DCN000809	3/29/2011	J. PETRI

1. LEAK RATE: LESS THAN OR EQUAL TO 1X10E-9 CC/SEC He AT ONE ATMOSPHERE DIFFERENTIAL PRESSURE.
2. INTERFACE AND MOUNTING HOLES IN ACCORDANCE WITH MIL-DTL-24308/2.
3. MATERIALS:  
 CONTACT: BERYLLIUM-COPPER ALLOY 172/173 IN ACCORDANCE WITH ASTM B196/197.  
 INSULATOR: CERAMAX PROPRIETARY CERAMIC.  
 WELD FLANGE: ALUMINUM ALLOY 4032 IN ACCORDANCE WITH ASTM B247.  
 THREADED INSERTS: IN ACCORDANCE WITH NAS 1130-04-15.
4. FINISH:  
 CONTACTS: NICKEL PLATE PER QQ-N-290, .000100/.000250 THICK.  
 GOLD PLATE PER ASTM B488, TYPE III, CODE A, .000050/.000100 THICK.  
 PLATE ENTIRE EXPOSED PIN, BOTH ENDS.  
  
 SHELL: CHEMICAL CONVERSION COAT IN ACCORDANCE WITH MIL-C-5541, CLASS 1A OR NONE.
5. ORDERING INSTRUCTIONS:  
 SPECIFY BASE NUMBER FOLLOWED BY DASH NUMBERS INDICATING PIN COUNT AND CONFIGURATION (SEE SHEET 2):

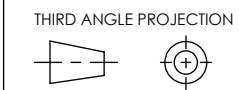


UNLESS OTHERWISE SPECIFIED  
 DIMENSIONING IAW ASME Y14.5M-1994  
 DIMENSIONS APPLY AFTER PROCESSES  
 DIMENSIONS IAW US CUSTOMARY UNITS  
 .X ±.1, .XX ±.01, .XXX ±.005, ∠ ±.5°  
 .010 MAX OUTSIDE R, .005 MAX INSIDE R  
 125 RMS SURFACE FINISH

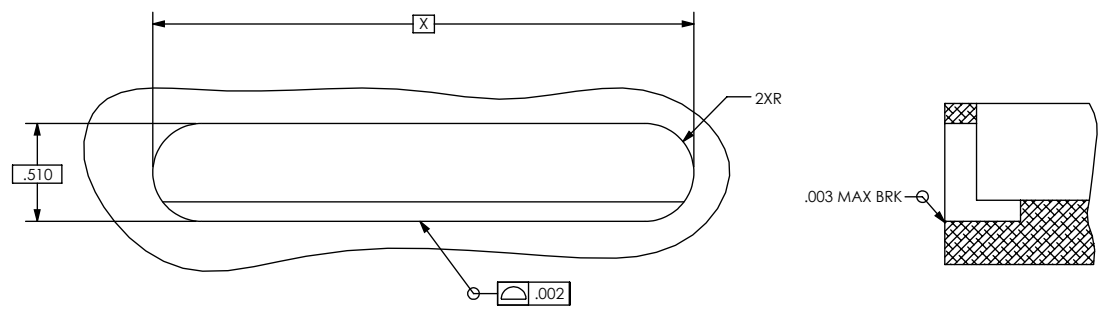
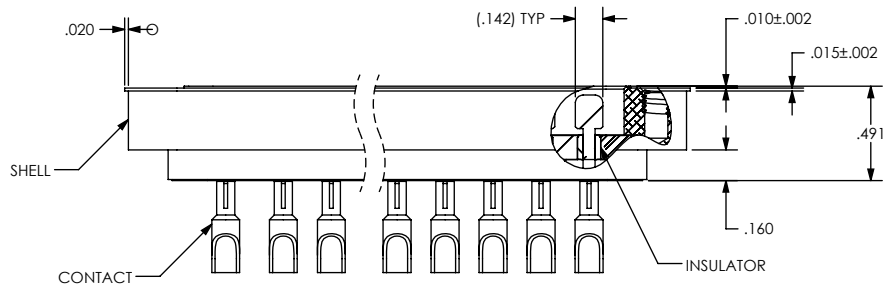
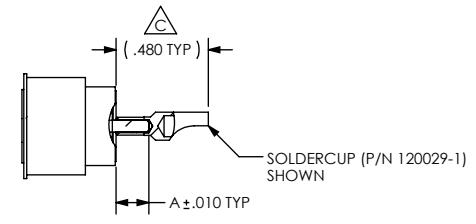
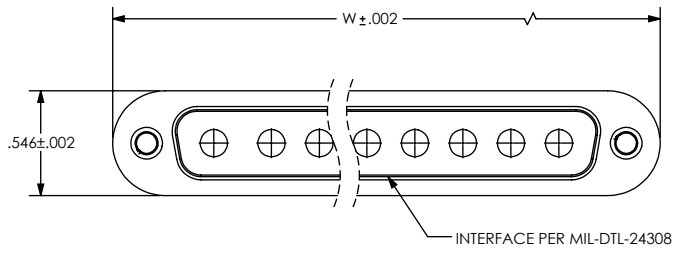


(321) 254-4067  
 WWW.SRIHERMETICS.COM

TITLE  
 CONNECTOR, POWER, SUB-D, TOP  
 FLANGED, ALUMINUM, LASER WELDABLE



SIZE A	DOCUMENT SRISD105	REV C
SCALE 1:1	CAGE CODE 3PJY7	SHEET 1 OF 2



HOLE DETAIL

C	
PART NUMBER	PIN EXTENSION A
SRISD105 - X - 1	.170

NUMBER OF CONTACTS	W	X
3	1.665	1.629
5	2.205	2.169
8	2.854	2.818

UNLESS OTHERWISE SPECIFIED  
 DIMENSIONING IAW ASME Y14.5M-1994  
 DIMENSIONS APPLY AFTER PROCESSES  
 DIMENSIONS IAW US CUSTOMARY UNITS  
 .X ± .1, .XX ± .01, .XXX ± .005, ∠ ± .5°  
 .010 MAX OUTSIDE R, .005 MAX INSIDE R  
 125 RMS SURFACE FINISH

**SRI HERMETICS** (321) 254-4067  
 WWW.SRIHERMETICS.COM

TITLE CONNECTOR, POWER, SUB-D, TOP FLANGED, ALUMINUM, LASER WELDABLE			
SIZE A	DOCUMENT SRISD105	REV C	
SCALE 1:1	CAGE CODE 3PJY7	SHEET 2 OF 2	

