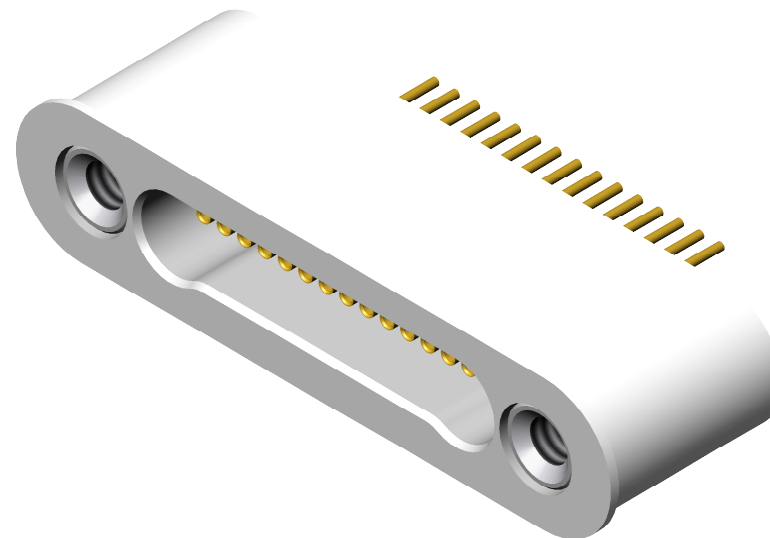
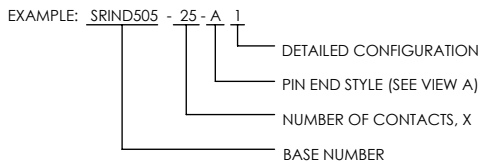


TITANIUM COMPATIBLE LASER WELDABLE NANO DUAL LOBE SINGLE ROW CONNECTOR

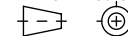
REVISIONS			
REV	DCN	REVISION DATE	RELEASE APPROVAL
-	INIT RLSE	11/14/2011	J. PETRI
A	DCN001523	4/2/2015	J. PETRI
B	DCN001652	1/15/2018	

- CONFIGURATION WITH THE FLANGE LOCATED AT THE TOP OF THE CONNECTOR
- DESIGNED TO LASER WELD INTO A LOW-PROFILE ELECTRONIC CHASSIS WALL
- CONFORMS TO MIL-DTL-32139 AND ARE AVAILABLE IN 9, 15, 21, 25, 31, 37 AND 51 COUNT PIN/SOCKET CONFIGURATIONS.
- INCORPORATES BERYLLIUM-COPPER PIN/SOCKETS INDIVIDUALLY SEALED USING CERAMAX® PROPRIETARY CERAMIC TO ESTABLISH A DURABLE HERMETIC SEAL.
- THE INTERNAL PINS CAN BE CONFIGURED TO ACCEPT INSULATED WIRE, AUTOMATIC WIRE BONDS, RIBBON WELDS, OR SOLDER CONNECTIONS.

1. LEAK RATE: LESS THAN OR EQUAL TO 1X10E-9 CC/SEC He AT ONE ATMOSPHERE DIFFERENTIAL PRESSURE.
 2. INTERFACE AND MOUNTING HOLES IN ACCORDANCE WITH MIL-DTL-32139/2.
 3. MATERIALS:
 CONTACT: BERYLLIUM-COPPER ALLOY 172/173 IN ACCORDANCE WITH ASTM B196/197.
 INSULATOR: CERAMAX PROPRIETARY CERAMIC.
 WELD FLANGE: TITANIUM GRADE 4 IN ACCORDANCE WITH ASTM B265.
 4. FINISH:
 CONTACTS: NICKEL PLATE PER QQ-N-290, .000100 / .000250 THICK.
 HARD GOLD STRIKE PER ASTM B488-01, TYPE II CODE C, .000020/.000050 THICK.
 GOLD PLATE PER ASTM B488-01, TYPE III, CODE A, .000050/.000100 THICK.
 PLATE ENTIRE EXPOSED PIN, BOTH ENDS.
 PLATING IN SOCKETS NOT REQUIRED BENEATH BLEED HOLE.
- SHELL: PASSIVATED
5. ORDERING INSTRUCTIONS:
 SPECIFY BASE NUMBER FOLLOWED BY DASH NUMBERS INDICATING PIN COUNT AND CONFIGURATION (SEE SHEETS 2 AND 3):



DIMENSIONING IAW ASME Y14.5-2009
 DIMENSIONS APPLY AFTER PROCESSES
 DIMENSIONS IAW US CUSTOMARY UNITS
 X ± .1, XX ± .01, XXX ± .005, ∠ ± .5°
 .010 MAX OUTSIDE R, .005 MAX INSIDE R
 63 RMS SURFACE FINISH
 THIRD ANGLE PROJECTION



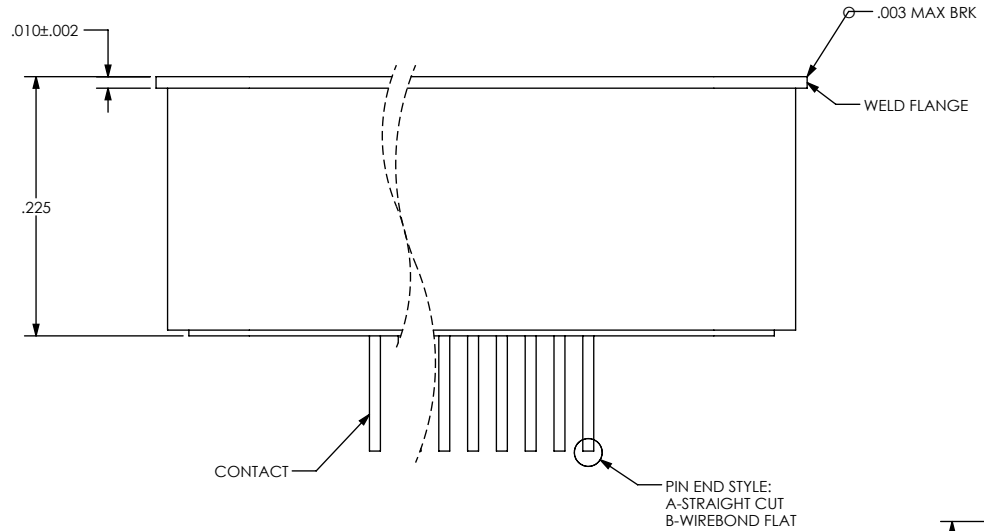
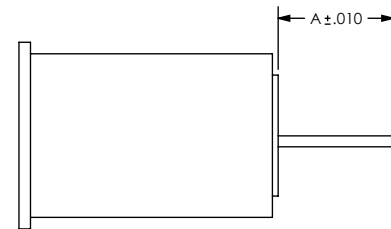
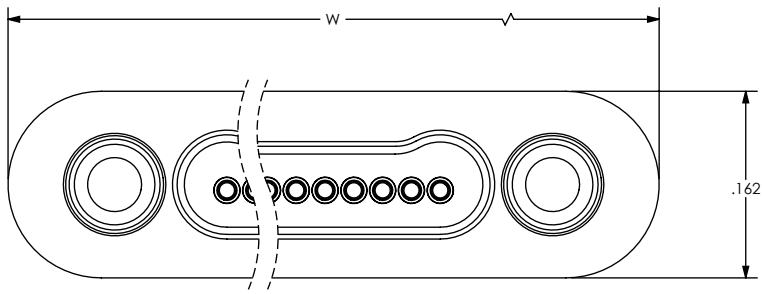
DO NOT SCALE DRAWING

Winchester
 Interconnect...
 Hermetics
 Melbourne, FL
 Minneapolis, MN

TITLE
 CONNECTOR, 250DL, TOP FLANGE, SINGLE ROW, TC LBW

SIZE DOCUMENT SRIND505 REV B

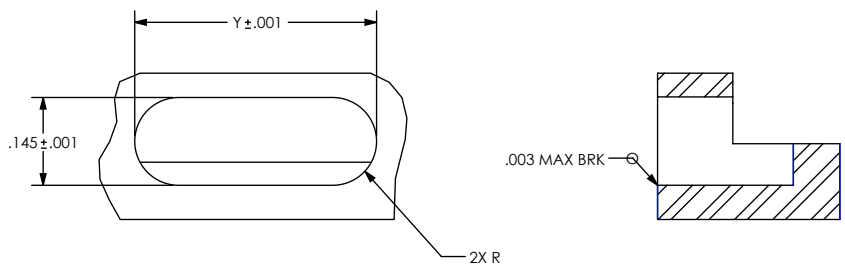
SCALE 6:1 CAGE CODE 3PJY7 SHEET 1 OF 3



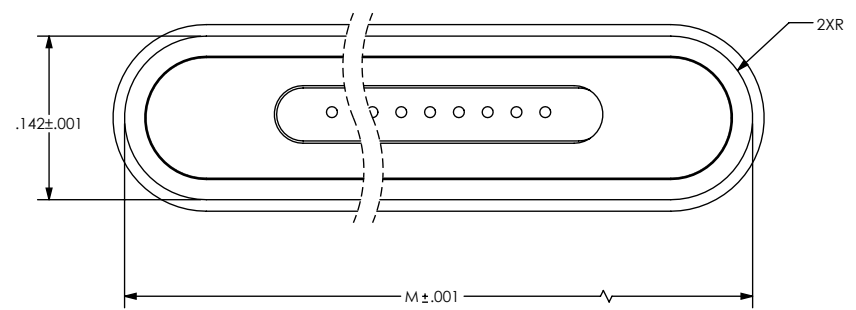
PIN EXTENSION (SEE SH 3)

NUMBER OF CONTACTS	W	M	Y
9	.580	.560	.563
15	.730	.710	.713
21	.880	.860	.863
25	.980	.960	.963
31	1.130	1.110	1.113
37	1.280	1.260	1.263
51	1.630	1.610	1.613

VIEW A



HOLE DETAIL

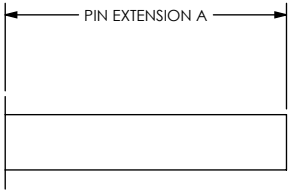


DIMENSIONING IAW ASME Y14.5-2009
 DIMENSIONS APPLY AFTER PROCESSES
 DIMENSIONS IAW US CUSTOMARY UNITS
 X ± .1, XX ± .01, XXX ± .005, ∠ ± .5°
 .010 MAX OUTSIDE R, .005 MAX INSIDE R
 63 RMS SURFACE FINISH
 THIRD ANGLE PROJECTION



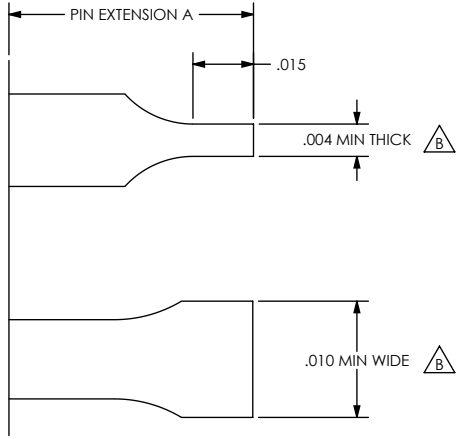
TITLE		CONNECTOR, 250DL, TOP FLANGE, SINGLE ROW, TC LBW	
SIZE	DOCUMENT	SRIND505	REV B
SCALE	6:1	CAGE CODE	3PJY7
SHEET		2 OF 3	

STRAIGHT PIN END STYLE, A



PART NUMBER	A
SRIND505 - X - A 1	.100

WIREBOND FLAT PIN END STYLE, B



PART NUMBER	A
SRIND505 - X - B 1	.100
SRIND505 - X - B 2	.032

DIMENSIONING IAW ASME Y14.5-2009
 DIMENSIONS APPLY AFTER PROCESSES
 DIMENSIONS IAW US CUSTOMARY UNITS
 X ± .1, XX ± .01, XXX ± .005, $\angle \pm .5^\circ$
 .010 MAX OUTSIDE R, .005 MAX INSIDE R
 63 RMS SURFACE FINISH
 THIRD ANGLE PROJECTION



DO NOT SCALE DRAWING

		Hermetics Melbourne, FL Minneapolis, MN	
		TITLE CONNECTOR, 250DL, TOP FLANGE, SINGLE ROW, TC LBW	
SIZE A	DOCUMENT SRIND505	REV B	SHEET 3 OF 3
SCALE 6:1	CAGE CODE 3PJY7	SHEET 3 OF 3	SHEET 3 OF 3