

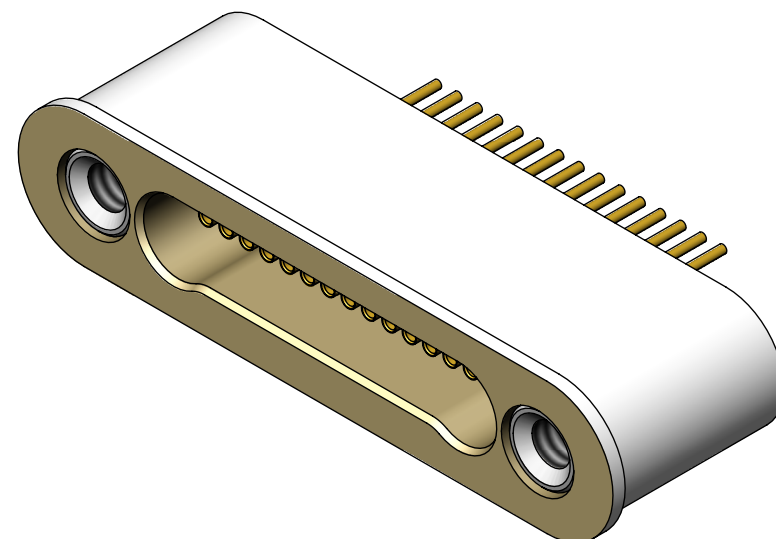
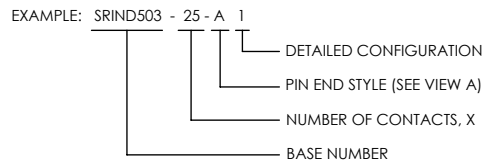
ALUMINUM COMPATIBLE LASER WELDABLE NANO DUAL LOBE SINGLE ROW CONNECTOR

- CONFIGURATION WITH THE FLANGE LOCATED AT THE TOP OF THE CONNECTOR
- DESIGNED TO LASER WELD INTO A LOW-PROFILE ELECTRONIC CHASSIS WALL
- CONFORMS TO MIL-DTL-32139 AND ARE AVAILABLE IN 9, 15, 21, 25, 31, 37 AND 51 COUNT PIN/SOCKET CONFIGURATIONS.
- INCORPORATES BERYLLIUM-COPPER PIN/SOCKETS INDIVIDUALLY SEALED USING CERAMAX® PROPRIETARY CERAMIC TO ESTABLISH A DURABLE HERMETIC SEAL.
- THE INTERNAL PINS CAN BE CONFIGURED TO ACCEPT INSULATED WIRE, AUTOMATIC WIRE BONDS, RIBBON WELDS, OR SOLDER CONNECTIONS.

REVISIONS			
REV	DCN	REVISION DATE	RELEASE APPROVAL
-	INIT RLSE	7/16/2010	J. PETRI
A	DCN001400	7/7/2014	J. PETRI
B	DCN001523	4/2/2015	J. PETRI
C	DCN001980	7/13/2017	

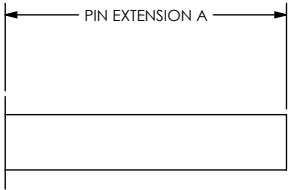
1. LEAK RATE: LESS THAN OR EQUAL TO 1X10E-9 CC/SEC He AT ONE ATMOSPHERE DIFFERENTIAL PRESSURE.
2. INTERFACE AND MOUNTING HOLES IN ACCORDANCE WITH MIL-DTL-32139/2.
3. MATERIALS:
 CONTACT: BERYLLIUM-COPPER ALLOY 172/173 IN ACCORDANCE WITH ASTM B196/197.
 INSULATOR: CERAMAX PROPRIETARY CERAMIC.
 WELD FLANGE: ALUMINUM ALLOY 4032 IN ACCORDANCE WITH ASTM B247.
4. FINISH:
 CONTACTS: NICKEL PLATE PER QQ-N-290, .000100 / .000250 THICK.
 GOLD PLATE PER ASTM B488-01, TYPE III, CODE A, .000050/.000100 THICK.
 PLATE ENTIRE EXPOSED PIN, BOTH ENDS.
 PLATING IN SOCKETS NOT REQUIRED BENEATH BLEED HOLE.

 SHELL: CHEMICAL CONVERSION COAT IN ACCORDANCE WITH MIL-DTL-5541, TYPE II, CLASS 1A.
5. ORDERING INSTRUCTIONS:
 SPECIFY BASE NUMBER FOLLOWED BY DASH NUMBERS INDICATING PIN COUNT AND CONFIGURATION (SEE SHEETS 2&3):



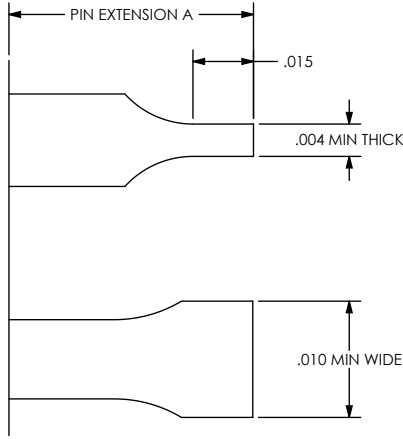
DIMENSIONING IAW ASME Y14.5M-1994 DIMENSIONS APPLY AFTER PROCESSES DIMENSIONS IAW US CUSTOMARY UNITS X ± .1, XX ± .01, XXX ± .005, ∠ ± .5° .010 MAX OUTSIDE R, .005 MAX INSIDE R 63 RMS SURFACE FINISH THIRD ANGLE PROJECTION 		(321) 254-4067 www.srihermetics.com SRI HERMETICS a division of WINCHESTER	
TITLE CONNECTOR, 250DL, TOP FLANGE, SINGLE ROW, AC LBW			
SIZE A	DOCUMENT SRIND503	REV C	SHEET 1 OF 3
DO NOT SCALE DRAWING		SCALE 6:1	CAGE CODE 3PJY7

STRAIGHT PIN END STYLE, A



PART NUMBER	A
SRIND503 - X - A 1	.100
SRIND503 - X - A 2	.070

WIREBOND FLAT PIN END STYLE, B



PART NUMBER	A
SRIND503 - X - B 1	.100
SRIND503 - X - B 2	.032
SRIND503 - X - B 3	.050

DIMENSIONING LAW ASME Y14.5M-1994
 DIMENSIONS APPLY AFTER PROCESSES
 DIMENSIONS LAW US CUSTOMARY UNITS
 X ± .1, XX ± .01, XXX ± .005, $\angle \pm .5^\circ$
 .010 MAX OUTSIDE R, .005 MAX INSIDE R
 63 RMS SURFACE FINISH
 THIRD ANGLE PROJECTION

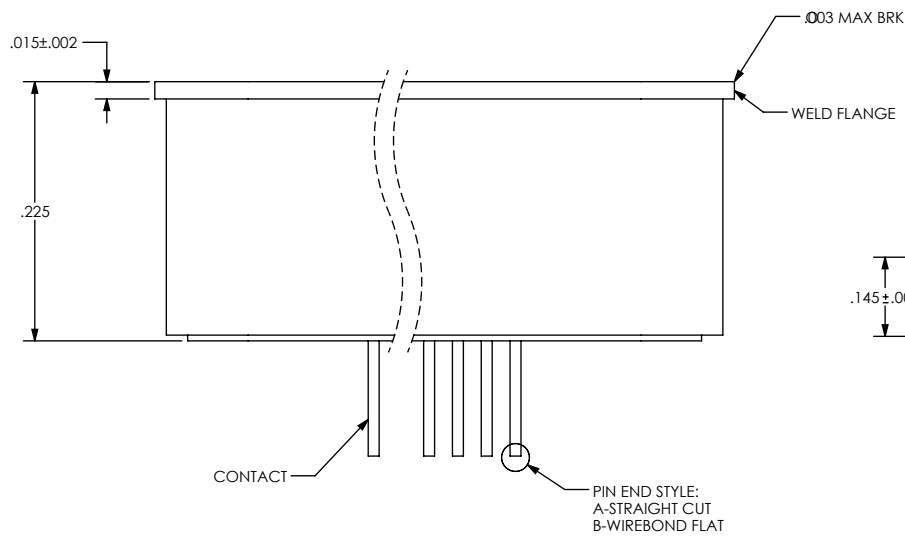
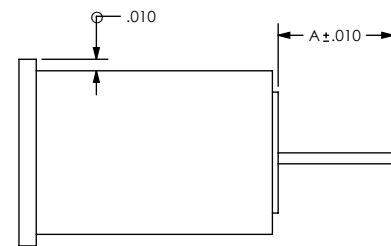
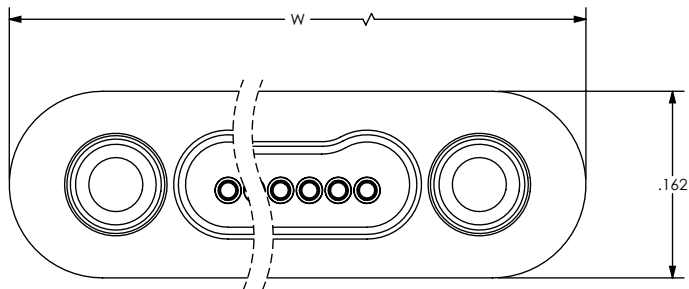


SRI HERMETICS (321) 254-4067
 a division of WINCHESTER www.srihermetics.com

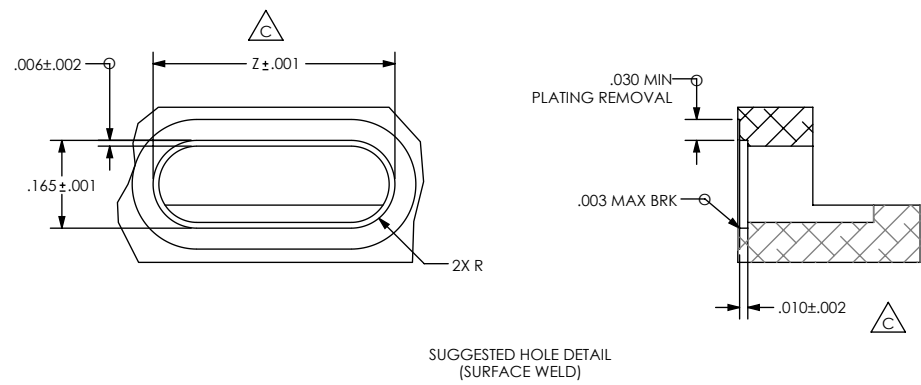
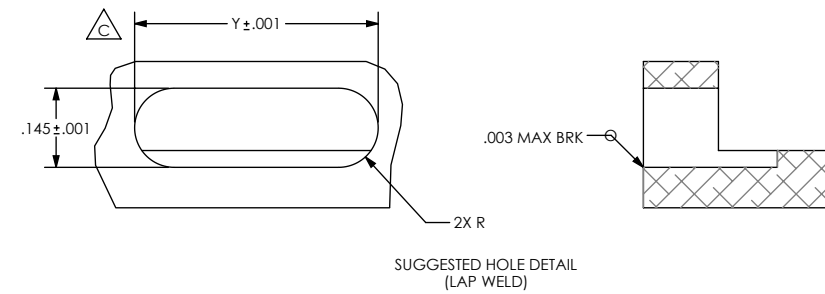
TITLE CONNECTOR, 250DL, TOP FLANGE, SINGLE ROW, AC LBW

SIZE DOCUMENT SRIND503 REV C

DO NOT SCALE DRAWING SCALE 6:1 CAGE CODE 3PJY7 SHEET 2 OF 3



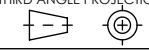
PIN EXTENSIONS (SEE SH 3)



VIEW A

NUMBER OF CONTACTS	C		
	W	Y	Z
9	0.580	0.563	0.583
15	0.730	0.713	0.733
21	0.880	0.863	0.883
25	0.980	0.963	0.983
31	1.130	1.113	1.133
37	1.280	1.263	1.283
51	1.630	1.613	1.633

DIMENSIONING LAW ASME Y14.5M-1994
 DIMENSIONS APPLY AFTER PROCESSES
 DIMENSIONS LAW US CUSTOMARY UNITS
 X ± .1, XX ± .01, XXX ± .005, ∠ ± 5°
 .010 MAX OUTSIDE R, .005 MAX INSIDE R
 63 RMS SURFACE FINISH
 THIRD ANGLE PROJECTION



		(321) 254-4067 www.srihermetics.com	
TITLE			
CONNECTOR, 250DL, TOP FLANGE, SINGLE ROW, AC LBW			
SIZE	DOCUMENT	SRIND503	REV C
A			
SCALE	6:1	CAGE CODE	3PJY7
		SHEET	3 OF 3