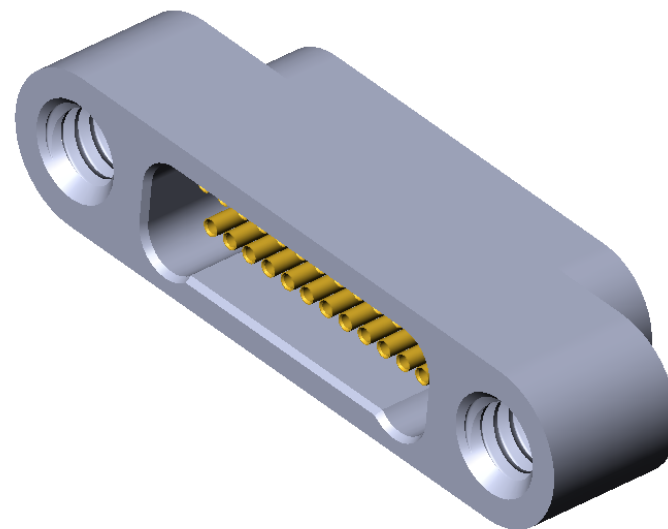
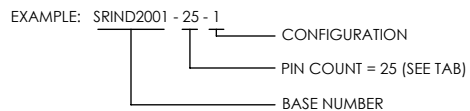



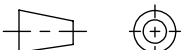
# STAINLESS STEEL COMPATIBLE LASER WELDABLE NANO DUAL LOBE CONNECTOR

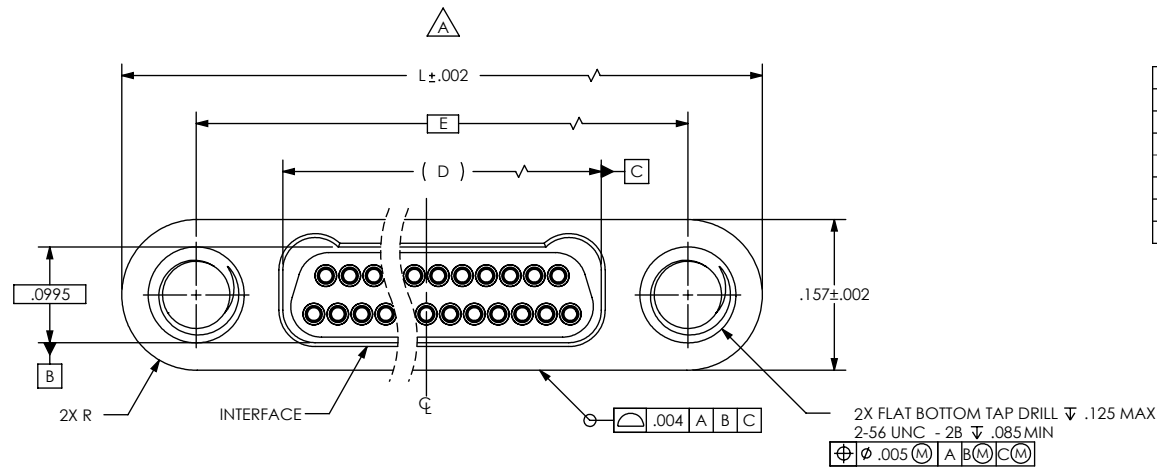
REVISIONS			
REV	CHANGE NO.	DATE	CFG APPROVAL
-	INIT RLSE	03-16-06	J. PETRI
A	DCN000613	1/21/2010	J. PETRI

1. LEAK RATE: LESS THAN OR EQUAL TO 1X10E-9 CC/SEC He AT ONE ATMOSPHERE DIFFERENTIAL PRESSURE..
2. INSULATION RESISTANCE: 5,000 MEGOHMS AT 300VDC+/-10% IN ACCORDANCE WITH MIL-STD-1344, METHOD 3003. RESISTANCE SHALL BE MEASURED 50%, BUT NOT LESS THAN FOUR PAIRS OF ADJACENT CONTACTS AND BETWEEN 50%, BUT NOT LESS THAN SIX CONTACTS AND ADJACENT TO THE SHELL.
3. DIELECTRIC WITHSTANDING VOLTAGE: UNMATED CONNECTOR SHALL SHOW NO EVIDENCE OG BREAKDOWN OR FLASHOVER WHEN SUBJECTED TO A TEST VOLTAGE OF 300VAC (60 Hz RMS) IN ACCORDANCE WITH MIL-STD-1344, METHOD 3001. DURATION OF APPLICATION SHALL BE 1 SECOND MINIMUM.
4. INTERFACE IN ACCORDANCE WITH MIL-DTL-32139/4.
5. MATERIALS:  
 CONTACT: STAINLESS STEEL ALLOY 303 IN ACCORDANCE WITH ASTM A581.  
 INSULATOR: CERAMAX PROPRIETARY CERAMIC.  
 SHELL: STAINLESS STEEL ALLOY 304L IN ACCORDANCE WITH SAE-AMS-QQ-S-763.
6. FINISH:  
 CONTACTS: NICKEL PLATE PER QQ-N-290, .000100 / .000250 THICK.  
 GOLD PLATE PER ASTM B488, TYPE III, CODE A, .000075 / .000125THICK.  
 PLATE ENTIRE EXPOSED PIN, BOTH ENDS.  
 PLATING IN SOCKETS NOT REQUIRED BENEATH BLEED HOLE.  
  
 SHELL: PASSIVATED IN ACCORDANCE WITH QQ-P-35.

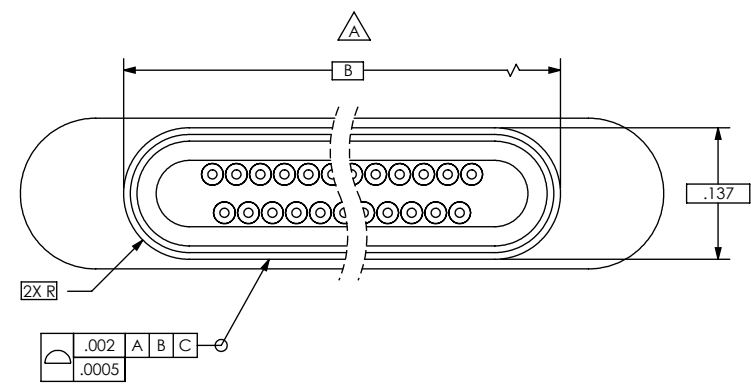
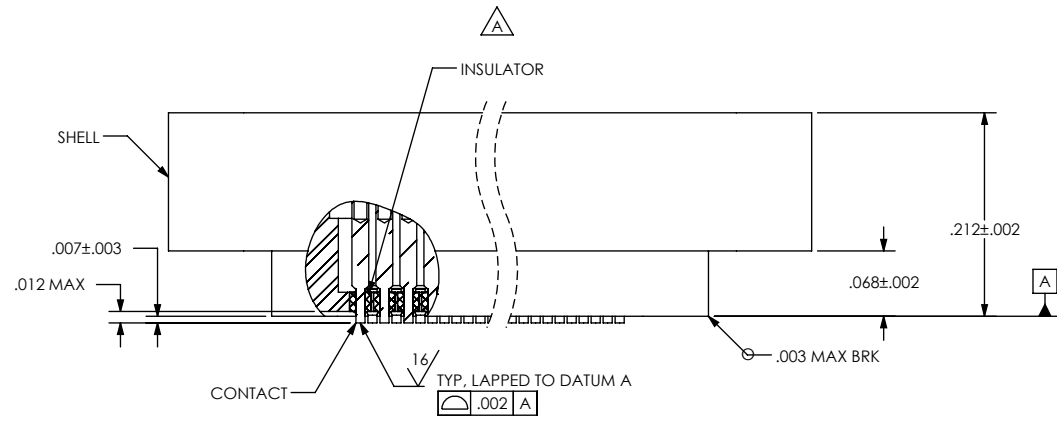
7. ORDERING INSTRUCTIONS:  
 SPECIFY BASE NUMBER FOLLOWED BY DASH NUMBERS INDICATING PIN COUNT AND CONFIGURATION (SEE SHEET 2):



UNLESS OTHERWISE SPECIFIED		 (321) 254-4067 WWW.SRIHERMETICS.COM	
DIMENSIONING IAW ASME Y14.5M-1994 DIMENSIONS APPLY AFTER PROCESSES DIMENSIONS IAW US CUSTOMARY UNITS .X ± .1, .XX ± .01, .XXX ± .005, ∠ ± .5° .010 MAX OUTSIDE R, .005 MAX INSIDE R 125 RMS SURFACE FINISH		TITLE CONNECTOR, 250DL, SST LBW	
THIRD ANGLE PROJECTION		SIZE A	DOCUMENT SRIND2001
		SCALE 6:1	REV A
		CAGE CODE 3PJY7	SHEET 1 OF 2



PART NUMBER	PIN COUNT	L	D	B	E
SRIND2001-9-X	9	0.500	0.1645	0.285	0.345
SRIND2001-15-X	15	0.575	0.2395	0.360	0.420
SRIND2001-21-X	21	0.650	0.3145	0.435	0.495
SRIND2001-25-X	25	0.700	0.3645	0.485	0.545
SRIND2001-31-X	31	0.775	0.4395	0.560	0.620
SRIND2001-37-X	37	0.850	0.5145	0.635	0.695
SRIND2001-51-X	51	1.025	0.6895	0.810	0.870



UNLESS OTHERWISE SPECIFIED  
 DIMENSIONING IAW ASME Y14.5M-1994  
 DIMENSIONS APPLY AFTER PROCESSES  
 DIMENSIONS IAW US CUSTOMARY UNITS  
 .X ± .1, .XX ± .01, .XXX ± .005, ∠ ± .5°  
 .010 MAX OUTSIDE R, .005 MAX INSIDE R  
 125 RMS SURFACE FINISH

THIRD ANGLE PROJECTION

		(321) 254-4067 WWW.SRIHERMETICS.COM	
TITLE CONNECTOR, 250DL, SST LBW			
SIZE	DOCUMENT	SRIND2001	REV
A			A
SCALE	CAGE CODE	3PJY7	SHEET
5:1			2 OF 2