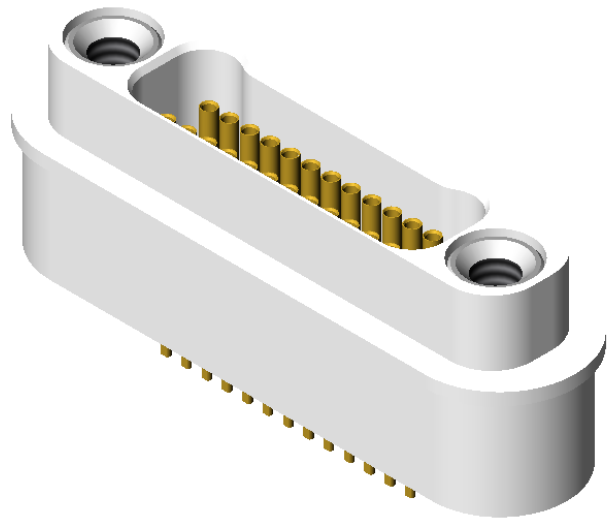
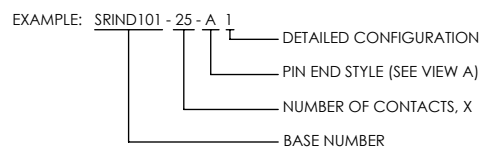


ALUMINUM COMPATIBLE LASER WELDABLE NANO DUAL LOBE CONNECTOR

REVISIONS			
REV	CHANGE NO.	DATE	APPROVED
-	INIT RLSE	----	J. PETRI

- TRADITIONAL CONFIGURATION WITH THE FLANGE LOCATED AT THE MIDSECTION OF THE CONNECTOR
- DESIGNED TO LASER WELD INTO AN ELECTRONIC CHASSIS WALL
- CONFORMS TO MIL-DTL-32139 AND ARE AVAILABLE IN 9, 15, 21, 25, 31, 37 AND 51 COUNT PIN/SOCKET CONFIGURATIONS.
- INCORPORATES BERYLLIUM-COPPER PIN/SOCKETS INDIVIDUALLY SEALED USING CERAMAX® PROPRIETARY CERAMIC TO ESTABLISH A DURABLE HERMETIC SEAL.
- THE INTERNAL PINS CAN BE CONFIGURED TO ACCEPT INSULATED WIRE, AUTOMATIC WIRE BONDS, RIBBON WELDS, OR SOLDER CONNECTIONS.

1. LEAK RATE: LESS THAN OR EQUAL TO 1X10E-9 CC/SEC He AT ONE ATMOSPHERE DIFFERENTIAL PRESSURE.
 2. INTERFACE AND MOUNTING HOLES IN ACCORDANCE WITH MIL-DTL-32139/4.
 3. MATERIALS:
 CONTACT: BERYLLIUM-COPPER ALLOY 172/173 IN ACCORDANCE WITH ASTM B196/197.
 INSULATOR: CERAMAX PROPRIETARY CERAMIC.
 WELD FLANGE: ALUMINUM ALLOY 4032 IN ACCORDANCE WITH ASTM B247.
 4. FINISH:
 CONTACTS: NICKEL PLATE PER QQ-N-290, .000100/.000250 THICK.
 GOLD PLATE PER ASTM B488, TYPE III, CODE A, .000050/.000100 THICK.
 PLATE ENTIRE EXPOSED PIN, BOTH ENDS.
 PLATING IN SOCKETS NOT REQUIRED BENEATH BLEED HOLE.
- SHELL: CHEMICAL CONVERSION COAT IN ACCORDANCE WITH MIL-C-5541, CLASS 1A OR NONE.
5. ORDERING INSTRUCTIONS:
 SPECIFY BASE NUMBER FOLLOWED BY DASH NUMBERS INDICATING PIN COUNT AND CONFIGURATION (SEE SHEET 2+):



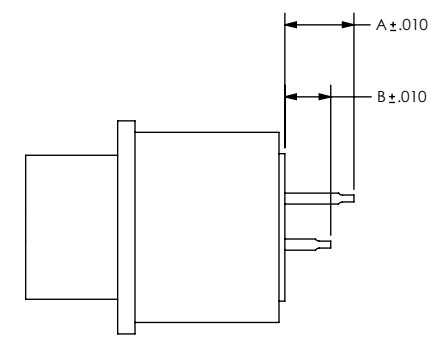
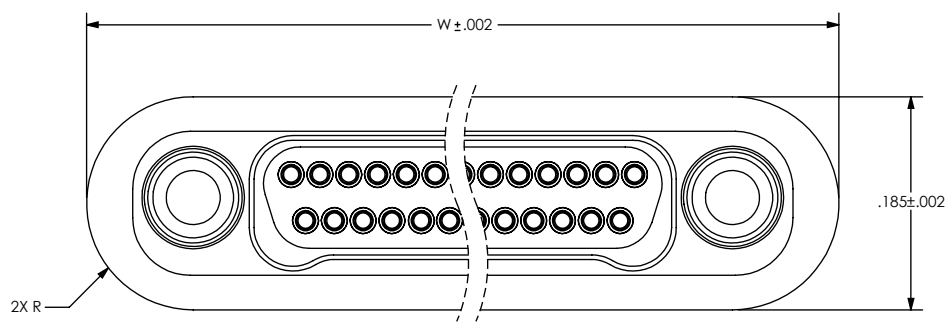
UNLESS OTHERWISE SPECIFIED
 DIMENSIONING IAW ASME Y14.5M-1994
 DIMENSIONS APPLY AFTER PROCESSES
 DIMENSIONS IAW US CUSTOMARY UNITS
 .X ± .1, .XX ± .01, .XXX ± .005, ∠ ± .5°
 .010 MAX OUTSIDE R, .005 MAX INSIDE R
 125 RMS SURFACE FINISH

THIRD ANGLE PROJECTION

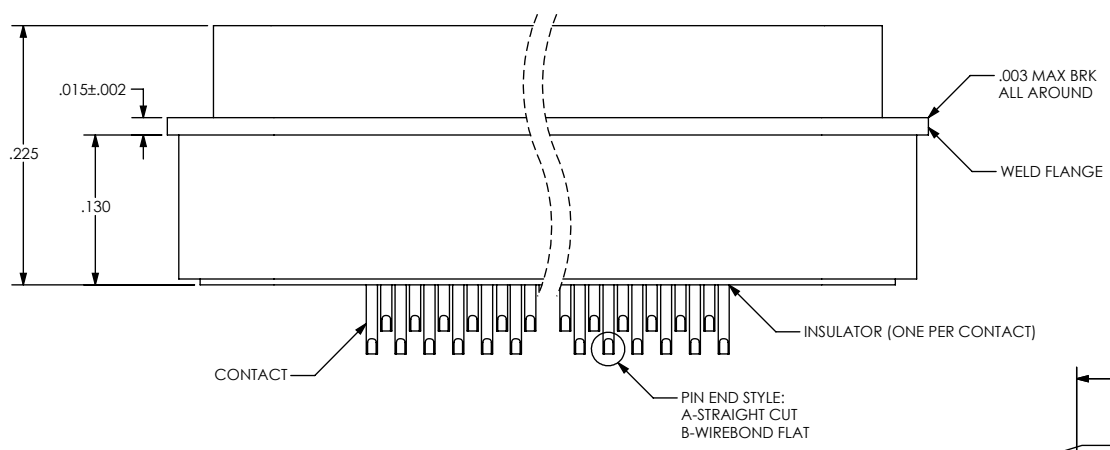
SRI HERMETICS (321) 254-4067
 WWW.SRIHERMETICS.COM

TITLE
 CONNECTOR, NANO DUAL LOBE, MID-FLANGE,
 ALUMINUM COMPATIBLE LASER WELDABLE

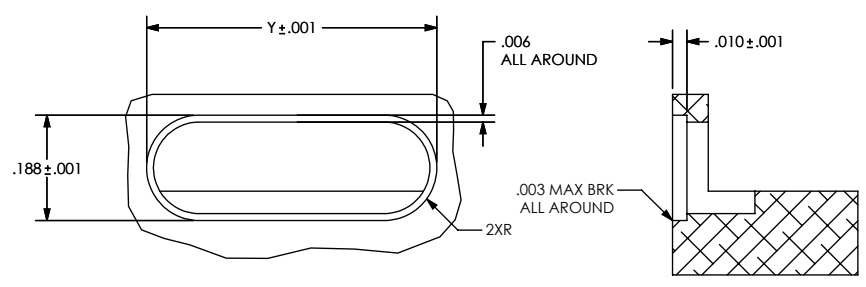
SIZE A	DOCUMENT SRIND101	REV -
SCALE 6:1	CAGE CODE 3PJY7	SHEET 1 OF 3



PIN EXTENSIONS (SEE SH 3)



VIEW A



HOLE DETAIL

NUMBER OF CONTACTS	W	Y
9	0.455	0.458
15	0.530	0.533
21	0.605	0.608
25	0.655	0.658
31	0.730	0.733
37	0.805	0.808
51	0.980	0.983

UNLESS OTHERWISE SPECIFIED
 DIMENSIONING IAW ASME Y14.5M-1994
 DIMENSIONS APPLY AFTER PROCESSES
 DIMENSIONS IAW US CUSTOMARY UNITS
 .X ± .1, .XX ± .01, .XXX ± .005, ∠ ± .5°
 .010 MAX OUTSIDE R, .005 MAX INSIDE R
 125 RMS SURFACE FINISH

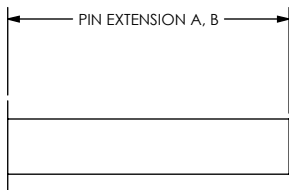
THIRD ANGLE PROJECTION

SRI HERMETICS (321) 254-4067
 WWW.SRIHERMETICS.COM

TITLE
 CONNECTOR, NANO DUAL LOBE, MID-FLANGE,
 ALUMINUM COMPATIBLE LASER WELDABLE

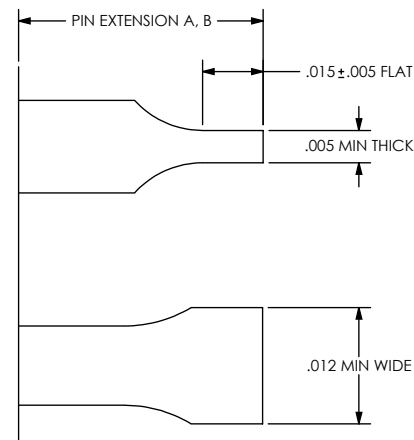
SIZE A DOCUMENT SRIND101 REV -
 SCALE 6:1 CAGE CODE 3PJY7 SHEET 2 OF 3

STRAIGHT PIN END STYLE, A



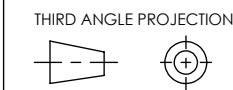
PART NUMBER	A	B
SRIND101 - X - A 1	.110	.110

WIREBOND FLAT PIN END STYLE, B



PART NUMBER	A	B
SRIND101 - X - B 1	.060	.040

UNLESS OTHERWISE SPECIFIED
 DIMENSIONING IAW ASME Y14.5M-1994
 DIMENSIONS APPLY AFTER PROCESSES
 DIMENSIONS IAW US CUSTOMARY UNITS
 .X ± .1, .XX ± .01, .XXX ± .005, ∠ ± .5°
 .010 MAX OUTSIDE R, .005 MAX INSIDE R
 125 RMS SURFACE FINISH



SRI HERMETICS (321) 254-4067
 WWW.SRIHERMETICS.COM

TITLE		CONNECTOR, NANO DUAL LOBE, MID-FLANGE, ALUMINUM COMPATIBLE LASER WELDABLE	
SIZE	DOCUMENT	SRIND101	REV -
SCALE	6:1	CAGE CODE 3PJY7	SHEET 3 OF 3