

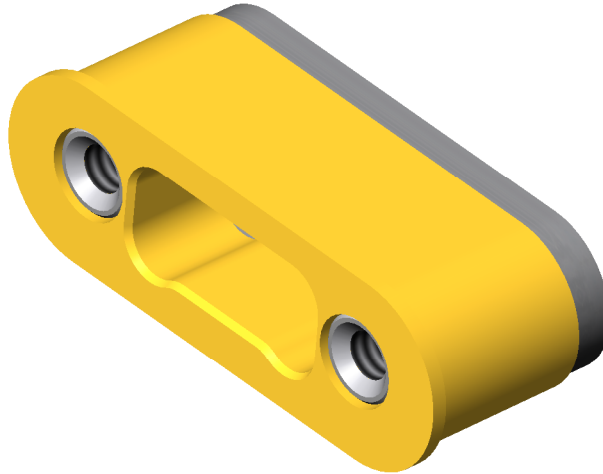
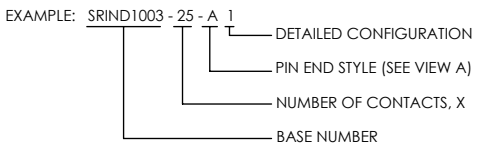
# SOLDERABLE NANO DUAL LOBE CONNECTOR

REVISIONS			
REV	DCN	REVISION DATE	RELEASE APPROVAL
-	INIT RLSE	6/6/2011	J. PETRI
A	DCN001117	1/14/2013	J. PETRI
B	DCN001529	4/2/2015	

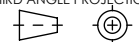
- TRADITIONAL CONFIGURATION WITH THE FLANGE LOCATED AT THE TOP OF THE CONNECTOR
- DESIGNED TO SOLDER INTO AN ELECTRONIC CHASSIS WALL
- CONFORMS TO MIL-DTL-32139 AND ARE AVAILABLE IN 9, 15, 21, 25, 31, 37 AND 51 COUNT PIN/SOCKET CONFIGURATIONS.
- INCORPORATES BERYLLIUM-COPPER PIN/SOCKETS INDIVIDUALLY SEALED USING CERAMAX® PROPRIETARY CERAMIC TO ESTABLISH A DURABLE HERMETIC SEAL.
- THE INTERNAL PINS CAN BE CONFIGURED TO ACCEPT INSULATED WIRE, AUTOMATIC WIRE BONDS, RIBBON WELDS, OR SOLDER CONNECTIONS.

1. LEAK RATE: LESS THAN OR EQUAL TO 1X10E-9 CC/SEC He AT ONE ATMOSPHERE DIFFERENTIAL PRESSURE.
2. INTERFACE AND MOUNTING HOLES IN ACCORDANCE WITH MIL-DTL-32139/4.
3. MATERIALS:  
 CONTACT: BERYLLIUM-COPPER ALLOY 172/173 IN ACCORDANCE WITH ASTM B196/197.  
 INSULATOR: CERAMAX PROPRIETARY CERAMIC.  
 SOLDER FLANGE: NICKEL/IRON/COBALT ALLOY (KOVAR).
4. FINISH:  
 CONTACTS: NICKEL PLATE PER QQ-N-290, .000100/.000250 THICK.  
 GOLD PLATE PER ASTM B488, TYPE III, CODE A, .000050/.000100 THICK.  
 PLATE ENTIRE EXPOSED PIN, BOTH ENDS.  
 PLATING IN SOCKETS NOT REQUIRED BENEATH BLEED HOLE.  
  
 SHELL: NICKEL PLATE PER QQ-N-290, .000100/.000200 THICK.  
 GOLD PLATE PER ASTM B488, TYPE 3, CODE A, .000050/.000100 THICK.

5. ORDERING INSTRUCTIONS:  
 SPECIFY BASE NUMBER FOLLOWED BY DASH NUMBERS INDICATING PIN COUNT AND CONFIGURATION (SEE SHEET 2+):



DIMENSIONING IAW ASME Y14.5M-1994  
 DIMENSIONS APPLY AFTER PROCESSES  
 DIMENSIONS IAW US CUSTOMARY UNITS  
 X ± .1, XX ± .01, XXX ± .005, <math>\angle \pm .5^\circ</math>  
 .010 MAX OUTSIDE R, .005 MAX INSIDE R  
 63 RMS SURFACE FINISH  
 THIRD ANGLE PROJECTION

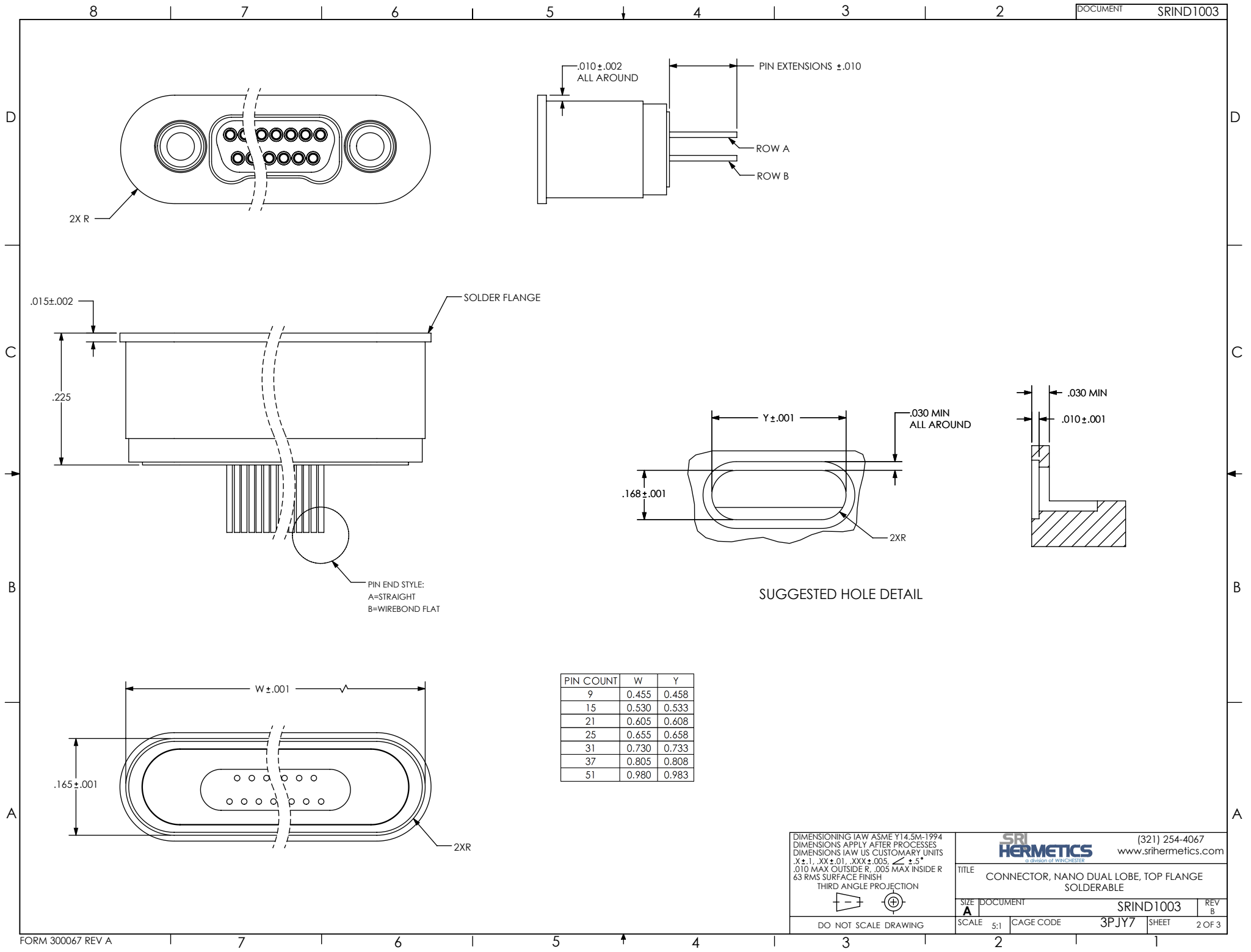


**SRI HERMETICS**  
 a division of WINCHESTER  
 (321) 254-4067  
 www.srihermetics.com

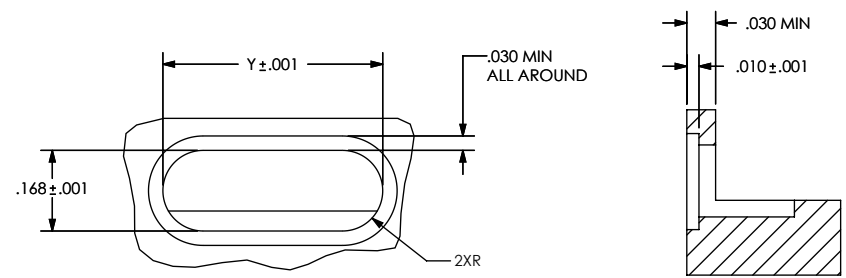
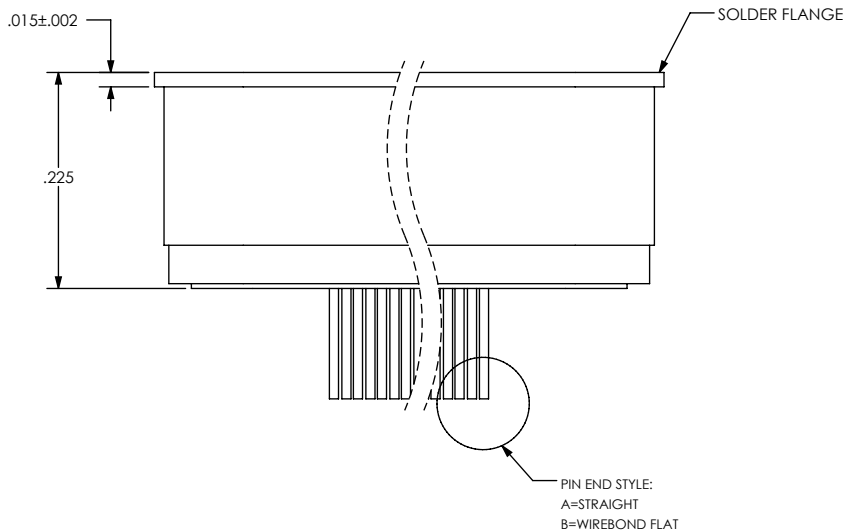
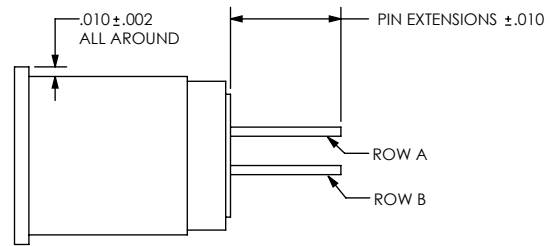
TITLE CONNECTOR, NANO DUAL LOBE, TOP FLANGE  
 SOLDERABLE

SIZE <b>A</b>	DOCUMENT SRIND1003	REV B
SCALE 6:1	CAGE CODE 3PJY7	SHEET 1 OF 3

DO NOT SCALE DRAWING

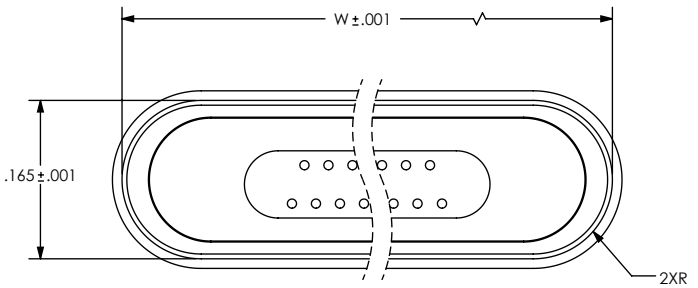


2X R



SUGGESTED HOLE DETAIL

PIN COUNT	W	Y
9	0.455	0.458
15	0.530	0.533
21	0.605	0.608
25	0.655	0.658
31	0.730	0.733
37	0.805	0.808
51	0.980	0.983



DIMENSIONING IAW ASME Y14.5M-1994  
 DIMENSIONS APPLY AFTER PROCESSES  
 DIMENSIONS IAW US CUSTOMARY UNITS  
 X ± .1, XX ± .01, XXX ± .005, ∠ ± .5°  
 .010 MAX OUTSIDE R, .005 MAX INSIDE R  
 63 RMS SURFACE FINISH  
 THIRD ANGLE PROJECTION

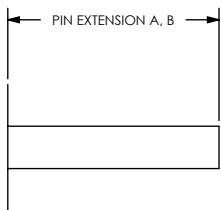
**SRI HERMETICS**  
 a division of WINCHESTER  
 (321) 254-4067  
 www.srihermetics.com

TITLE CONNECTOR, NANO DUAL LOBE, TOP FLANGE  
 SOLDERABLE

SIZE A DOCUMENT SRIND1003 REV B  
 SCALE 5:1 CAGE CODE 3PJY7 SHEET 2 OF 3

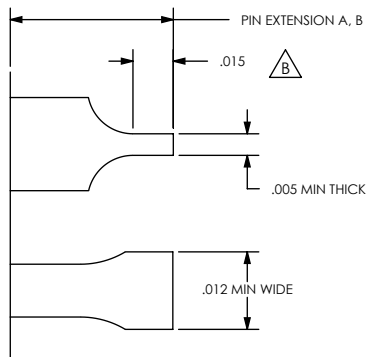
DO NOT SCALE DRAWING

STRAIGHT PIN END STYLE, A



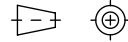
PART NUMBER	A	B
SRIND1003- X - A1	.115	.115

WIREBOND FLAT PIN END STYLE, B



PART NUMBER	A	B
SRIND1003- X -B1	.060	.040

DIMENSIONING IAW ASME Y14.5M-1994  
 DIMENSIONS APPLY AFTER PROCESSES  
 DIMENSIONS IAW US CUSTOMARY UNITS  
 X ± .1, .XX ± .01, .XXX ± .005, <math>\angle \pm 5^\circ</math>  
 .010 MAX OUTSIDE R, .005 MAX INSIDE R  
 63 RMS SURFACE FINISH  
 THIRD ANGLE PROJECTION



DO NOT SCALE DRAWING



(321) 254-4067  
 www.srihermetics.com

TITLE CONNECTOR, NANO DUAL LOBE, TOP FLANGE  
 SOLDERABLE

SIZE DOCUMENT SRIND1003 REV B

SCALE 2:1 CAGE CODE 3PJY7 SHEET 3 OF 3