

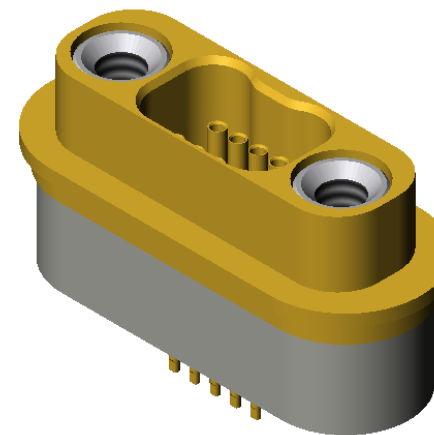
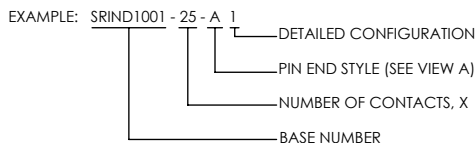
ALUMINUM COMPATIBLE SOLDERABLE NANO DUAL LOBE CONNECTOR

REVISIONS			
REV	CHANGE NO.	DATE	RELEASE APPROVAL
-	INIT RLSE	----	J. PETR
A	DCN001117	1/14/2013	<i>[Signature]</i>

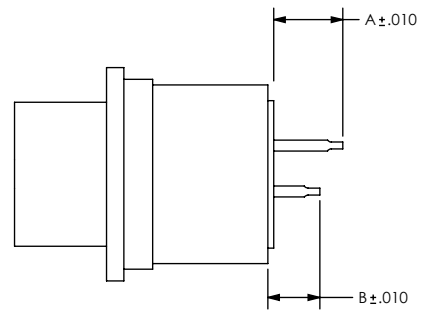
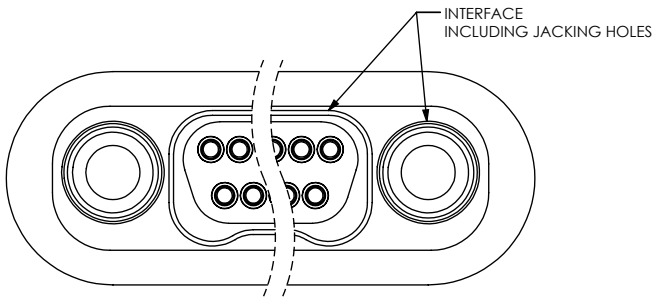
- TRADITIONAL CONFIGURATION WITH THE FLANGE LOCATED AT THE MIDSECTION OF THE CONNECTOR
- DESIGNED TO SOLDER INTO AN ELECTRONIC CHASSIS WALL
- CONFORMS TO MIL-DTL-32139 AND ARE AVAILABLE IN 9, 15, 21, 25, 31, 37 AND 51 COUNT PIN/SOCKET CONFIGURATIONS.
- INCORPORATES BERYLLIUM-COPPER PIN/SOCKETS INDIVIDUALLY SEALED USING CERAMAX® PROPRIETARY CERAMIC TO ESTABLISH A DURABLE HERMETIC SEAL.
- THE INTERNAL PINS CAN BE CONFIGURED TO ACCEPT INSULATED WIRE, AUTOMATIC WIRE BONDS, RIBBON WELDS, OR SOLDER CONNECTIONS.

1. LEAK RATE: LESS THAN OR EQUAL TO 1X10E-9 CC/SEC He AT ONE ATMOSPHERE DIFFERENTIAL PRESSURE.
2. INTERFACE AND MOUNTING HOLES IN ACCORDANCE WITH MIL-DTL-32139/4.
3. MATERIALS:
 CONTACT: BERYLLIUM-COPPER ALLOY 172/173 IN ACCORDANCE WITH ASTM B196/197.
 INSULATOR: CERAMAX PROPRIETARY CERAMIC.
 SOLDER FLANGE: ALUMINUM ALLOY 4032 IN ACCORDANCE WITH ASTM B247.
4. FINISH:
 CONTACTS: NICKEL PLATE PER QQ-N-290, .000100/.000250 THICK.
 GOLD PLATE PER ASTM B488, TYPE III, CODE A, .000050/.000100 THICK.
 PLATE ENTIRE EXPOSED PIN, BOTH ENDS.
 PLATING IN SOCKETS NOT REQUIRED BENEATH BLEED HOLE.

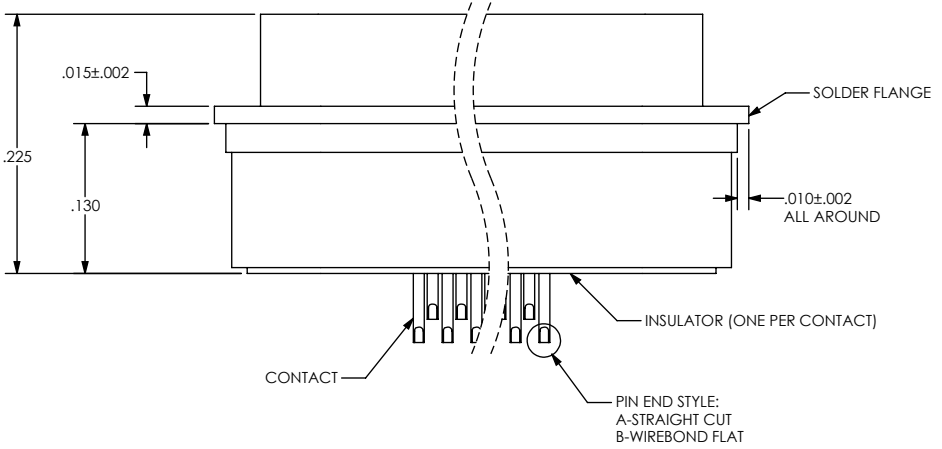
 SHELL: NICKEL PLATE PER QQ-N-290, .000150/.000300 THICK.
 GOLD PLATE PER ASTM B488, TYPE 3, CODE A, .000050/.000100 THICK.
5. ORDERING INSTRUCTIONS:
 SPECIFY BASE NUMBER FOLLOWED BY DASH NUMBERS INDICATING PIN COUNT AND CONFIGURATION (SEE SHEET 2+):



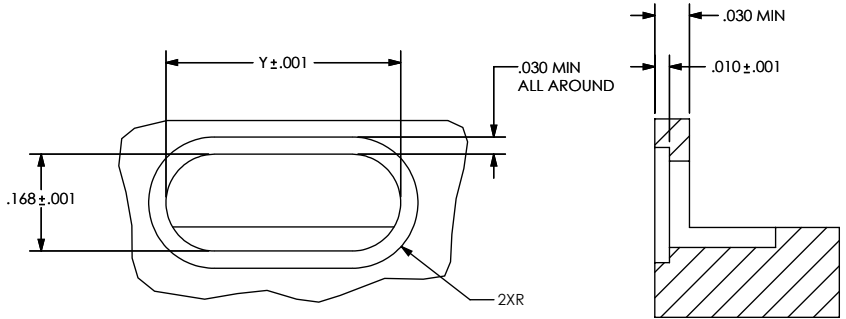
UNLESS OTHERWISE SPECIFIED DIMENSIONING IAW ASME Y14.5M-1994 DIMENSIONS APPLY AFTER PROCESSES DIMENSIONS IAW US CUSTOMARY UNITS .X ± .1, .XX ± .01, .XXX ± .005, ∠ ± .5° .010 MAX OUTSIDE R, .005 MAX INSIDE R 125 RMS SURFACE FINISH		(321) 254-4067 WWW.SRIHERMETICS.COM	
THIRD ANGLE PROJECTION 		TITLE CONNECTOR, NANO DUAL LOBE, MID FLANGED, ALUMINUM SOLDERABLE	
SIZE A	DOCUMENT SRIND1001	REV A	
SCALE 6:1	CAGE CODE 3PJY7	SHEET 1 OF 3	



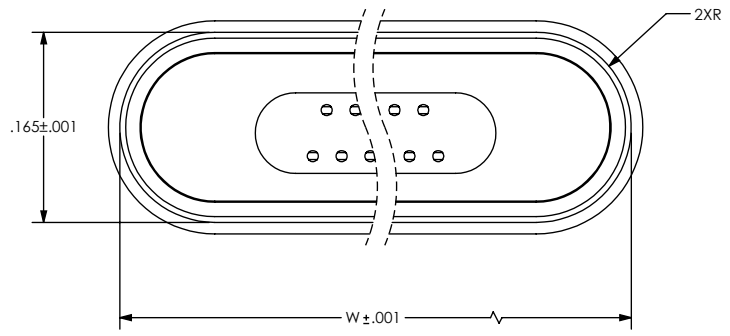
PIN EXTENSIONS (SEE SH 3)



VIEW A



SUGGESTED HOLE DETAIL

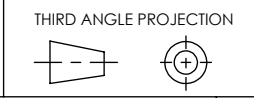


NUMBER OF CONTACTS	W	Y
9	0.465	0.468
15	0.540	0.543
21	0.615	0.618
25	0.665	0.668
31	0.740	0.743
37	0.815	0.818
51	0.990	0.993

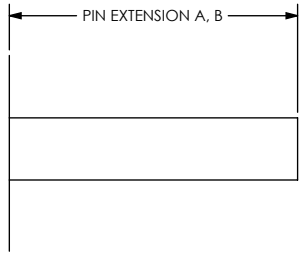
UNLESS OTHERWISE SPECIFIED
DIMENSIONING IAW ASME Y14.5M-1994
DIMENSIONS APPLY AFTER PROCESSES
DIMENSIONS IAW US CUSTOMARY UNITS
.X±.1, .XX±.01, .XXX±.005, $\angle \pm .5^\circ$
.010 MAX OUTSIDE R, .005 MAX INSIDE R
125 RMS SURFACE FINISH

SRI HERMETICS (321) 254-4067
WWW.SRIHERMETICS.COM

TITLE CONNECTOR, NANO DUAL LOBE, MID FLANGED, ALUMINUM SOLDERABLE			
SIZE A	DOCUMENT SRIND1001	REV A	
SCALE 6:1	CAGE CODE 3PJY7	SHEET 2 OF 3	

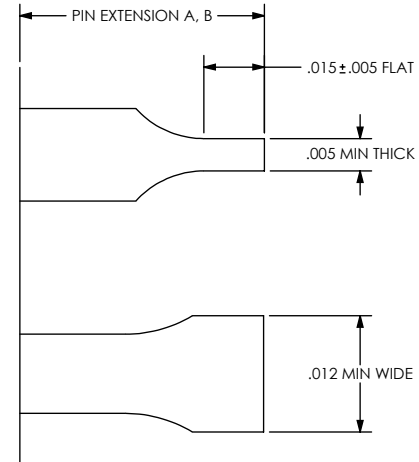


STRAIGHT PIN END STYLE, A



PART NUMBER	A	B
SRIND1001 - X - A 1	.060	.060

WIREBOND FLAT PIN END STYLE, B



PART NUMBER	A	B
SRIND1001 - X - B 1	.060	.040

UNLESS OTHERWISE SPECIFIED
 DIMENSIONING IAW ASME Y14.5M-1994
 DIMENSIONS APPLY AFTER PROCESSES
 DIMENSIONS IAW US CUSTOMARY UNITS
 .X ± .1, .XX ± .01, .XXX ± .005, ∠ ± .5°
 .010 MAX OUTSIDE R, .005 MAX INSIDE R
 125 RMS SURFACE FINISH

THIRD ANGLE PROJECTION

SRI HERMETICS (321) 254-4067
 WWW.SRIHERMETICS.COM

TITLE
 CONNECTOR, NANO DUAL LOBE, MID FLANGED,
 ALUMINUM SOLDERABLE

SIZE A	DOCUMENT SRIND1001	REV A
SCALE 6:1	CAGE CODE 3PJY7	SHEET 3 OF 3