

REVISIONS			
REV	CHANGE NO.	DATE	CFG APPROVAL
-	INIT RLSE	2/5/2010	J. PETRI

STAINLESS STEEL COMPATIBLE LASER WELDABLE MICRO-D PLUG CONNECTOR

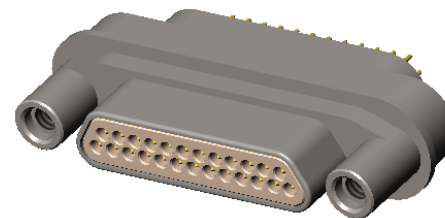
- TRADITIONAL CONFIGURATION WITH THE FLANGE LOCATED AT THE MIDSECTION OF THE CONNECTOR
- DESIGNED TO LASER WELD INTO AN ELECTRONIC CHASSIS WALL
- CONFORMS TO MIL-PRF-83513 AND ARE AVAILABLE IN 9, 15, 21, 25, 31, 37, 51, AND 100 COUNT PIN/SOCKET CONFIGURATIONS.
- INCORPORATES BERYLLIUM-COPPER PIN/SOCKETS INDIVIDUALLY SEALED USING CERAMAX® PROPRIETARY CERAMIC TO ESTABLISH A DURABLE HERMETIC SEAL.
- THE INTERNAL PINS CAN BE CONFIGURED TO ACCEPT INSULATED WIRE, AUTOMATIC WIRE BONDS, RIBBON WELDS, OR SOLDER CONNECTIONS.


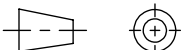
1. LEAK RATE: LESS THAN OR EQUAL TO 1X10E-9 CC/SEC He AT ONE ATMOSPHERE DIFFERENTIAL PRESSURE.
2. INTERFACE AND MOUNTING HOLES IN ACCORDANCE WITH MIL-PRF-83513/3.
3. MATERIALS:
CONTACT: BERYLLIUM-COPPER ALLOY 172/173 IN ACCORDANCE WITH ASTM B196/197.
INSULATOR: CERAMAX PROPRIETARY CERAMIC.
WELD FLANGE: STAINLESS STEEL 304L IN ACCORDANCE WITH SAE AMS-QQ-S-763.
4. FINISH:
CONTACTS: NICKEL PLATE PER QQ-N-290, CLASS 2, .000100 / .000250 THICK.
GOLD PLATE PER ASTM B488-01, TYPE III, CODE A, .000050/.000100 THICK.

SHELL: PASSIVATED.
5. SOLDER CUPS ACCEPT 24 AWG OR SMALLER.
6. ORDERING INSTRUCTIONS:
SPECIFY BASE NUMBER FOLLOWED BY DASH NUMBERS INDICATING PIN COUNT, PIN END STYLE, AND CONFIGURATION (SEE SHEET 2+):

EXAMPLE: SRIMD703 - 25 - A 1

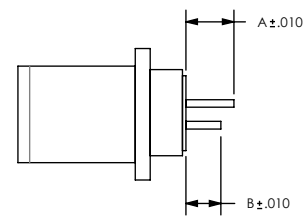
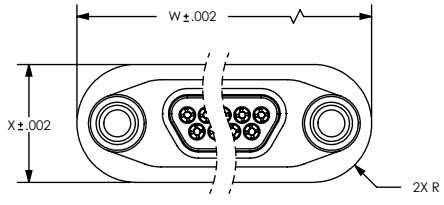
- _____ DETAILED CONFIGURATION
- _____ PIN END STYLE (SEE VIEW A)
- _____ NUMBER OF CONTACTS, X
- _____ BASE NUMBER



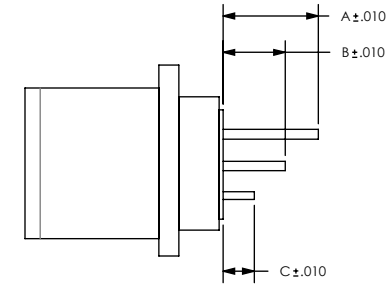
UNLESS OTHERWISE SPECIFIED		 (321) 254-4067 WWW.SRIHERMETICS.COM	
DIMENSIONING IAW ASME Y14.5M-1994 DIMENSIONS APPLY AFTER PROCESSES DIMENSIONS IAW US CUSTOMARY UNITS .X ± .1, .XX ± .01, .XXX ± .005, ∠ ± .5° .010 MAX OUTSIDE R, .005 MAX INSIDE R 125 RMS SURFACE FINISH			
THIRD ANGLE PROJECTION		TITLE	
		CONNECTOR, MICRO-D, PLUG, MALE SC LBW	
SIZE	DOCUMENT	SRIMD703	REV
A			-
SCALE	CAGE CODE	3PJY7	SHEET
2:1			1 OF 3

8 7 6 5 4 3 2

D

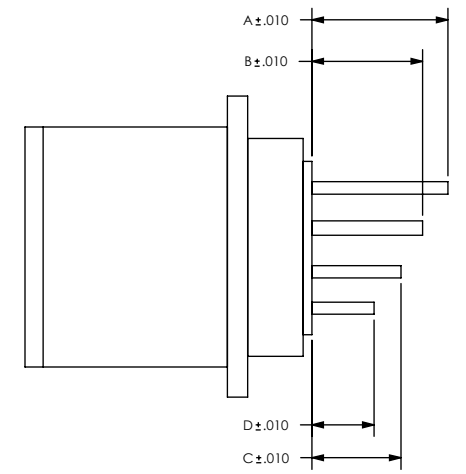


9-37 PIN CONFIGURATIONS



51 PIN CONFIGURATION

PIN EXTENSIONS (SEE SH3)

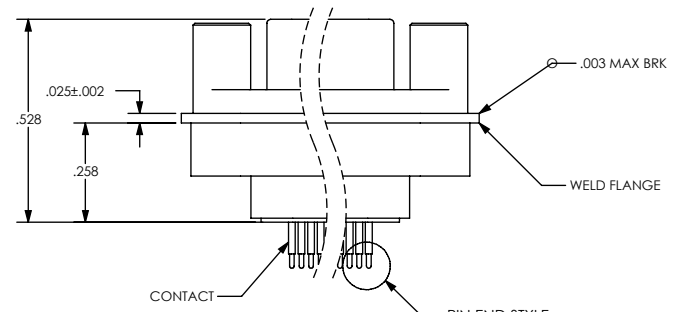


100 PIN CONFIGURATION

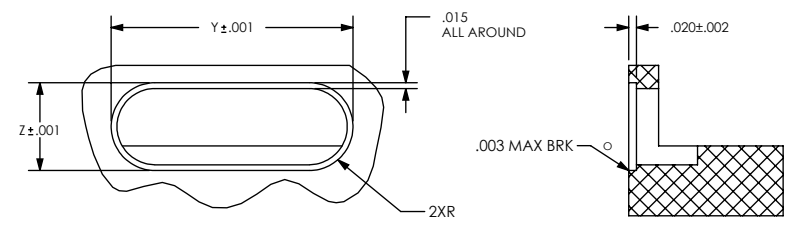
C

D

C



VIEW A



HOLE DETAIL

B

B

A

A

NUMBER OF CONTACTS	W	X	Y	Z
9	.775	.307	.778	.310
15	.925	.307	.928	.310
21	1.075	.307	1.078	.310
25	1.175	.307	1.178	.310
31	1.325	.307	1.328	.310
37	1.475	.307	1.478	.310
51	1.425	.350	1.428	.353
100	2.046	.394	2.049	.397

UNLESS OTHERWISE SPECIFIED
 DIMENSIONING IAW ASME Y14.5M-1994
 DIMENSIONS APPLY AFTER PROCESSES
 DIMENSIONS IAW US CUSTOMARY UNITS
 .X ± .1, .XX ± .01, .XXX ± .005, ∠ ± .5°
 .010 MAX OUTSIDE R, .005 MAX INSIDE R
 125 RMS SURFACE FINISH

THIRD ANGLE PROJECTION

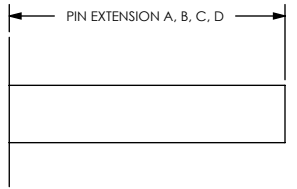
SRI HERMETICS (321) 254-4067
 WWW.SRIHERMETICS.COM

TITLE: CONNECTOR, MICRO-D, PLUG, MALE SC LBW

SIZE	DOCUMENT	SRIMD703	REV
A			-
SCALE	CAGE CODE	3PJY7	SHEET
2:1			2 OF 3

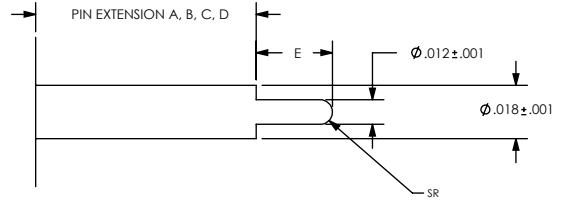
8 7 6 5 4 3 2 1

STRAIGHT PIN END STYLE, A



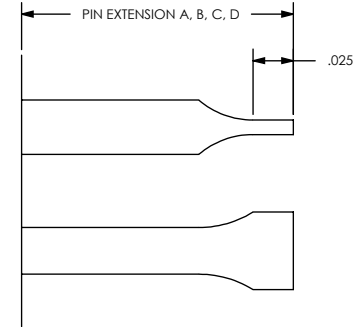
PART NUMBER	A	B	C	D
SRIMD703-X-A 1	.120	.120	.120	.120

STEPPED PIN END STYLE, B



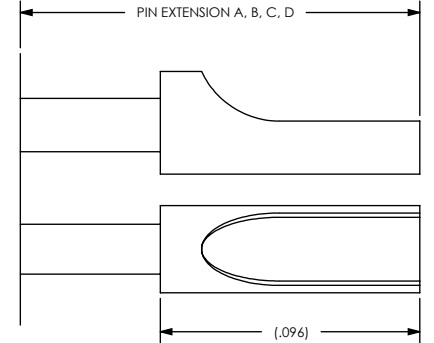
PART NUMBER	A	B	C	D	E
SRIMD703-X-B 1	.083	.083	.083	.083	.037

WIREBOND FLAT PIN END STYLE, C



PART NUMBER	A	B	C	D
SRIMD703-X-C 1	.110	.075	----	----

SOLDER CUP PIN END STYLE, D



PART NUMBER	A	B	C	D
SRIMD703-X-D 1	.123	.123	.123	.123

UNLESS OTHERWISE SPECIFIED
 DIMENSIONING IAW ASME Y14.5M-1994
 DIMENSIONS APPLY AFTER PROCESSES
 DIMENSIONS IAW US CUSTOMARY UNITS
 .X ± .1, .XX ± .01, .XXX ± .005, ∠ ± .5°
 .010 MAX OUTSIDE R, .005 MAX INSIDE R
 125 RMS SURFACE FINISH

THIRD ANGLE PROJECTION

SRI HERMETICS (321) 254-4067
 WWW.SRIHERMETICS.COM

TITLE: CONNECTOR, MICRO-D, PLUG, MALE SC LBW

SIZE A	DOCUMENT SRIMD703	REV -
SCALE 2:1	CAGE CODE 3PJY7	SHEET 3 OF 3