

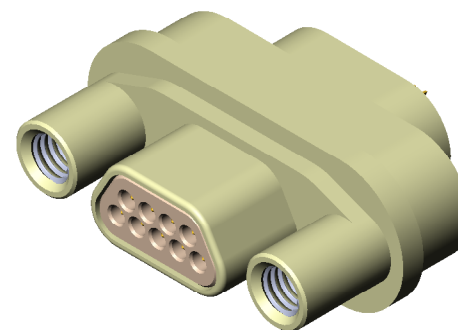
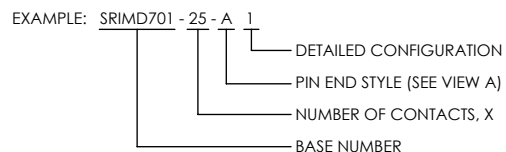
REVISIONS			
REV	CHANGE NO.	DATE	CFG APPROVAL
-	INIT RLSE	2010-09-17	J. PETRI


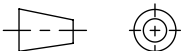
# ALUMINUM COMPATIBLE LASER WELDABLE MICRO-D PLUG CONNECTOR

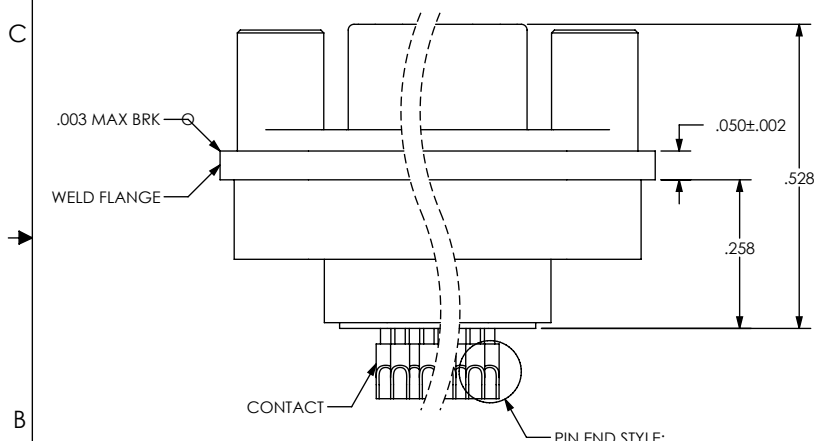
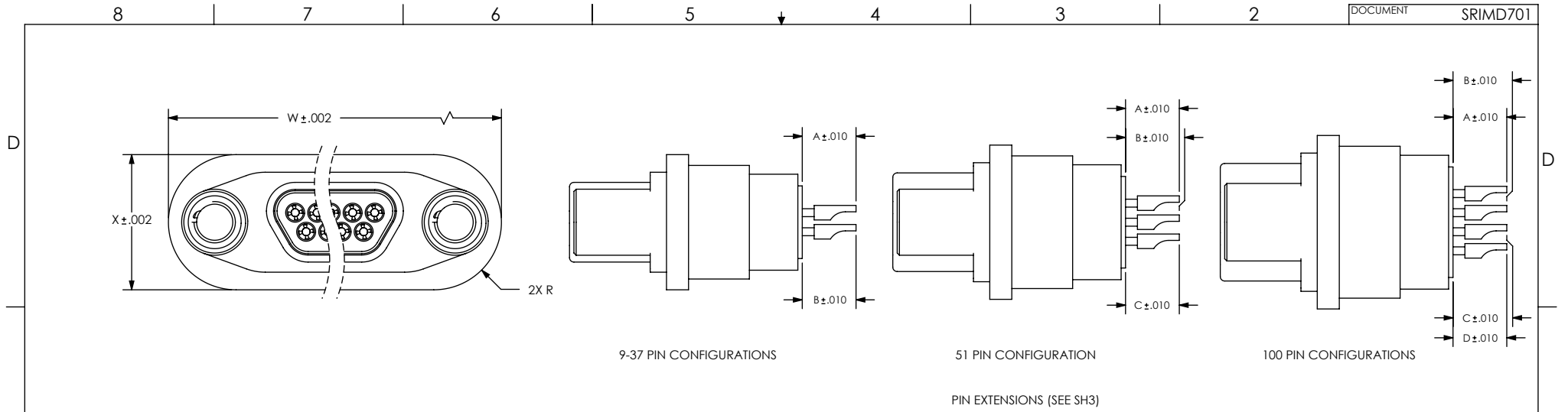
- TRADITIONAL CONFIGURATION WITH THE FLANGE LOCATED AT THE MIDSECTION OF THE CONNECTOR
- DESIGNED TO LASER WELD INTO AN ELECTRONIC CHASSIS WALL
- CONFORMS TO MIL-PRF-83513 AND ARE AVAILABLE IN 9, 15, 21, 25, 31, 37, 51, AND 100 COUNT PIN/SOCKET CONFIGURATIONS.
- INCORPORATES BERYLLIUM-COPPER PIN/SOCKETS INDIVIDUALLY SEALED USING CERAMAX® PROPRIETARY CERAMIC TO ESTABLISH A DURABLE HERMETIC SEAL.
- THE INTERNAL PINS CAN BE CONFIGURED TO ACCEPT INSULATED WIRE, AUTOMATIC WIRE BONDS, RIBBON WELDS, OR SOLDER CONNECTIONS.

1. LEAK RATE: LESS THAN OR EQUAL TO 1X10E-9 CC/SEC He AT ONE ATMOSPHERE DIFFERENTIAL PRESSURE.
2. INTERFACE AND MOUNTING HOLES IN ACCORDANCE WITH MIL-DTL-83513/3.
3. MATERIALS:  
 CONTACT: BERYLLIUM-COPPER ALLOY 172/173 IN ACCORDANCE WITH ASTM B196/197.  
 INSULATOR: CERAMAX PROPRIETARY CERAMIC.  
 WELD FLANGE: ALUMINUM ALLOY 4032 IN ACCORDANCE WITH ASTM B247.  
 THREADED INSERTS: IN ACCORDANCE WITH NAS1130-02-15 (9-51 PIN) OR NAS1130-04-15 (100-PIN).
4. FINISH:  
 CONTACTS: NICKEL PLATE PER QQ-N-290, CLASS 2, .000100 / .000250 THICK.  
 GOLD PLATE PER ASTM B488-01, TYPE III, CODE A, .000050 / .000100 THICK.  
  
 SHELL: CHEMICAL CONVERSION COAT PER MIL-DTL-5541, TYPE I, CLASS 1A.
5. SOLDER CUPS ACCEPT 24 AWG OR SMALLER.

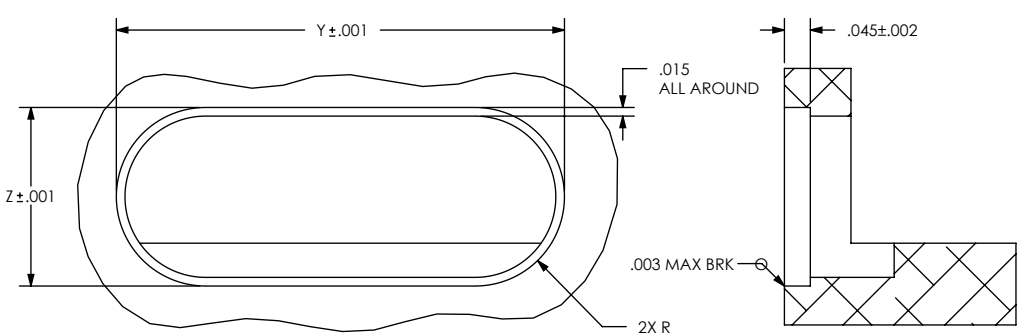
6. ORDERING INSTRUCTIONS:  
 SPECIFY BASE NUMBER FOLLOWED BY DASH NUMBERS INDICATING PIN COUNT, PIN END STYLE, AND CONFIGURATION (SEE SHEET 2+):



UNLESS OTHERWISE SPECIFIED		 (321) 254-4067 WWW.SRIHERMETICS.COM	
DIMENSIONING IAW ASME Y14.5M-1994 DIMENSIONS APPLY AFTER PROCESSES DIMENSIONS IAW US CUSTOMARY UNITS .X ± .1, .XX ± .01, .XXX ± .005, ∠ ± .5° .010 MAX OUTSIDE R, .005 MAX INSIDE R 125 RMS SURFACE FINISH		TITLE CONNECTOR, MICRO-D, PLUG, MF AC LBW	
THIRD ANGLE PROJECTION		SIZE A	DOCUMENT SRIMD701
		SCALE 3:1	CAGE CODE 3PJY7
		SHEET 1 OF 3	REV -



VIEW A



SUGGESTED HOLE DETAIL

NUMBER OF CONTACTS	W	X	Y	Z
9	.775	.307	.778	.310
15	.925	.307	.928	.310
21	1.075	.307	1.078	.310
25	1.175	.307	1.178	.310
31	1.325	.307	1.328	.310
37	1.475	.307	1.478	.310
51	1.425	.350	1.428	.353
100	2.046	.394	2.049	.397

UNLESS OTHERWISE SPECIFIED  
DIMENSIONING IAW ASME Y14.5M-1994  
DIMENSIONS APPLY AFTER PROCESSES  
DIMENSIONS IAW US CUSTOMARY UNITS  
.X ± .1, .XX ± .01, .XXX ± .005, ∠ ± .5°  
.010 MAX OUTSIDE R, .005 MAX INSIDE R  
125 RMS SURFACE FINISH

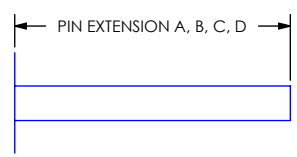
THIRD ANGLE PROJECTION

**SRI HERMETICS** (321) 254-4067  
WWW.SRIHERMETICS.COM

TITLE: CONNECTOR, MICRO-D, PLUG, MF AC LBW

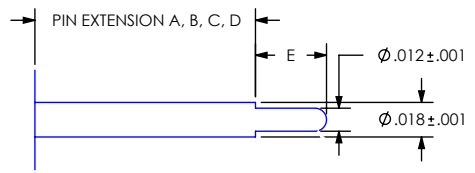
SIZE: A DOCUMENT SRIMD701 REV: -  
SCALE: 3:1 CAGE CODE 3PJY7 SHEET 2 OF 3

STRAIGHT PIN END STYLE, A



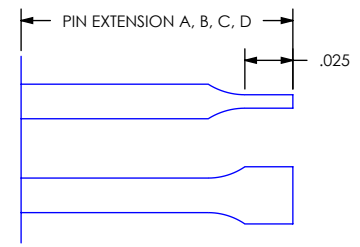
PART NUMBER	A	B	C	D
SRIMD701-X-A 1	.150	.150	.150	.150

STEPPED PIN END STYLE, B



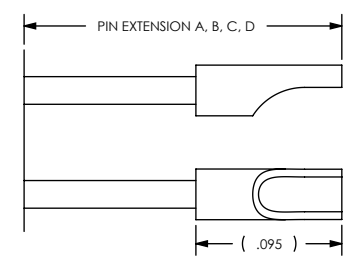
PART NUMBER	A	B	C	D	E
SRIMD701-X-B 1	.083	.083	.083	.083	.037

WIREBOND FLAT PIN END STYLE, C



PART NUMBER	A	B	C	D
SRIMD701-X-C 1	.110	.075	-----	-----

SOLDER CUP PIN END STYLE, D



PART NUMBER	A	B	C	D
SRIMD701-X-D 1	.122	.122	.122	.122

UNLESS OTHERWISE SPECIFIED  
 DIMENSIONING IAW ASME Y14.5M-1994  
 DIMENSIONS APPLY AFTER PROCESSES  
 DIMENSIONS IAW US CUSTOMARY UNITS  
 .X ± .1, .XX ± .01, .XXX ± .005, ∠ ± .5°  
 .010 MAX OUTSIDE R, .005 MAX INSIDE R  
 125 RMS SURFACE FINISH

THIRD ANGLE PROJECTION

**SRI HERMETICS** (321) 254-4067  
 WWW.SRIHERMETICS.COM

TITLE: CONNECTOR, MICRO-D, PLUG, MF AC LBW

SIZE A	DOCUMENT SRIMD701	REV -
SCALE 3:1	CAGE CODE 3PJY7	SHEET 3 OF 3