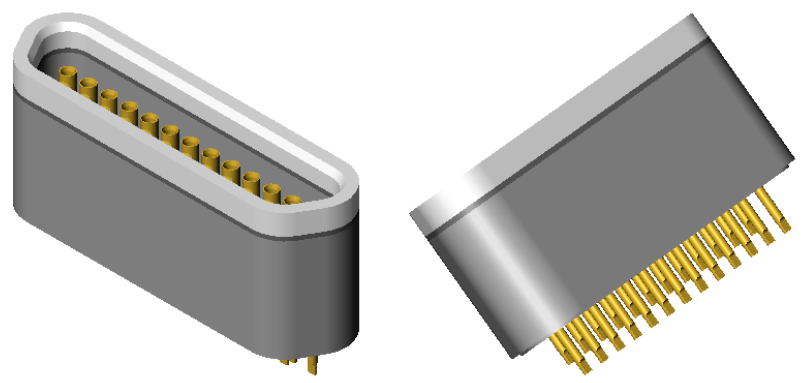
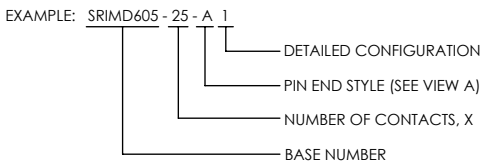


ALUMINUM COMPATIBLE LASER WELDABLE REDUCED INTERFACE MICRO-D CONNECTOR

REVISIONS			
REV	DCN	REVISION DATE	RELEASE APPROVAL
-	INIT RLSE	2013-08-16	<i>[Signature]</i>

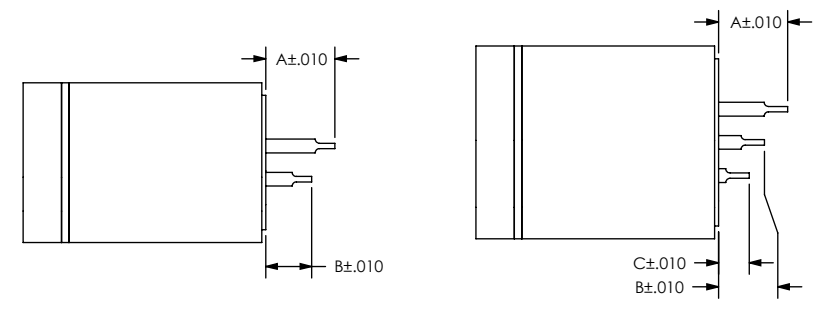
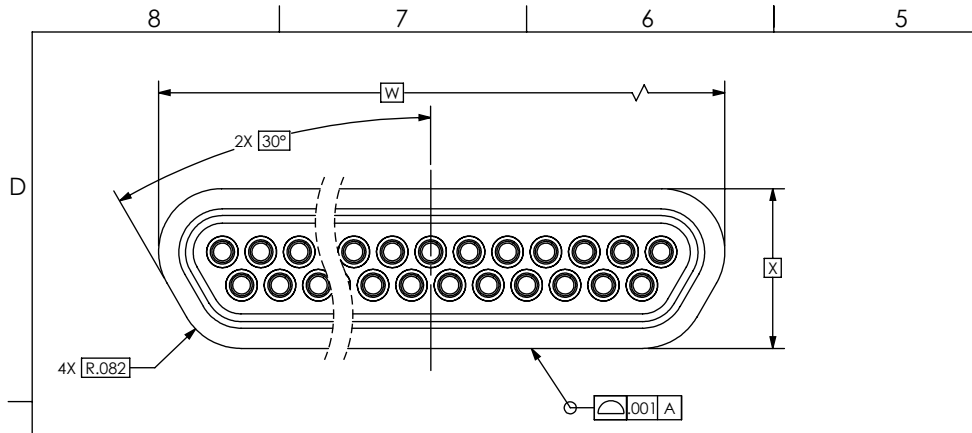
- CONFIGURATION WITH NO FLANGE FOR LOW PROFILE APPLICATIONS.
- DESIGNED TO LASER WELD INTO AN ELECTRONIC CHASSIS WALL.
- CONFORMS TO MIL-DTL-83513 AND ARE AVAILABLE IN 9, 15, 21, 25, 31, 37, AND 51 COUNT PIN/SOCKET CONFIGURATIONS.
- INCORPORATES BERYLLIUM-COPPER PIN/SOCKETS INDIVIDUALLY SEALED USING CERAMAX® PROPRIETARY CERAMIC TO ESTABLISH A DURABLE HERMETIC SEAL.
- THE INTERNAL PINS CAN BE CONFIGURED TO ACCEPT INSULATED WIRE, AUTOMATIC WIRE BONDS, RIBBON WELDS, OR SOLDER CONNECTIONS.

1. LEAK RATE: LESS THAN OR EQUAL TO 1X10E-9 CC/SEC He AT ONE ATMOSPHERE DIFFERENTIAL PRESSURE.
2. INTERFACE IN ACCORDANCE WITH MIL-DTL-83513/7.
3. MATERIALS:
 CONTACT: BERYLLIUM-COPPER ALLOY 172/173 IN ACCORDANCE WITH ASTM B196/197.
 INSULATOR: CERAMAX PROPRIETARY CERAMIC.
 WELD PERIPHERY: ALUMINUM ALLOY 4047 IN ACCORDANCE WITH AWS A5.8.
4. FINISH:
 CONTACTS: NICKEL PLATE PER QQ-N-290, .000100/.000200 THICK.
 GOLD PLATE PER ASTM B488, TYPE III, CODE A, .000050/.000175 THICK.
 SHELL: CHEMICAL CONVERSION COAT IN ACCORDANCE WITH MIL-DTL-5541, TYPE 1, CLASS 3.
5. ORDERING INSTRUCTIONS:
 SPECIFY BASE NUMBER FOLLOWED BY DASH NUMBERS INDICATING PIN COUNT, PIN END STYLE, AND CONFIGURATION (SEE SHEET 2+);



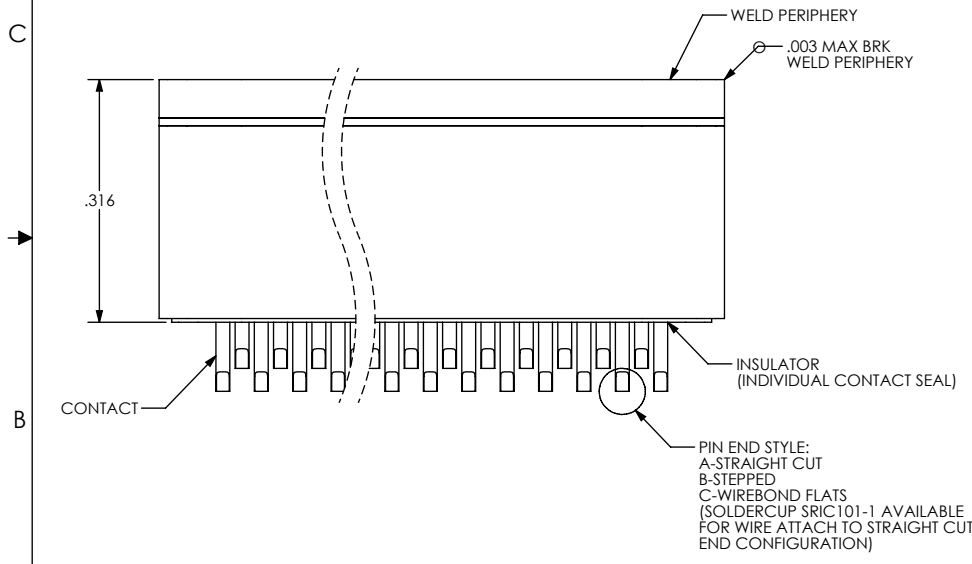
VIEWS SHOWN FOR REFERENCE ONLY
SCALE 3:1

UNLESS OTHERWISE SPECIFIED DIMENSIONING IAW ASME Y14.5M-1994 DIMENSIONS APPLY AFTER PROCESSES DIMENSIONS IAW US CUSTOMARY UNITS .X ± .1, .XX ± .01, .XXX ± .005, ∠ ± .5° .010 MAX OUTSIDE R, .005 MAX INSIDE R 125 RMS SURFACE FINISH		(321) 254-4067 WWW.SRIHERMETICS.COM	
THIRD ANGLE PROJECTION 		TITLE CONNECTOR, MICRO-D, REDUCED INTERFACE, ALUMINUM LASER WELDABLE	
SIZE A	DOCUMENT SRIMD605	REV -	
SCALE 4:1	CAGE CODE 3PJY7	SHEET 1 OF 3	



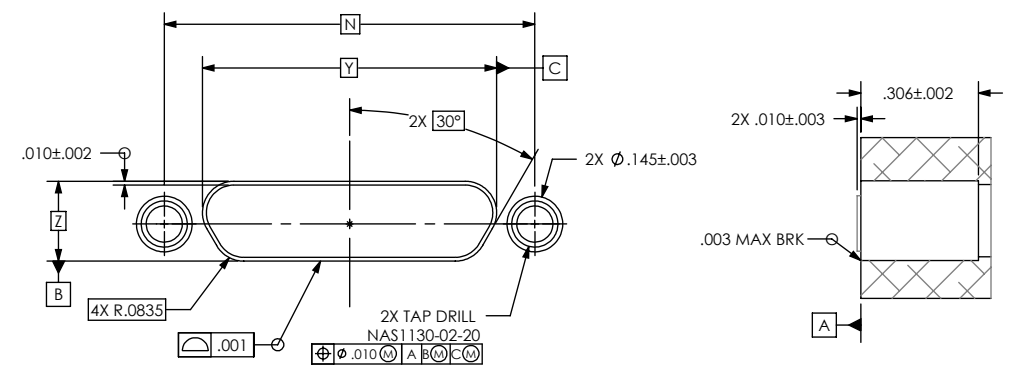
9-37 PIN CONFIGURATIONS 51 PIN CONFIGURATION

PIN EXTENSIONS (SEE SH 3)



VIEW A

NUMBER OF CONTACTS	W	X	Y	Z	N
9	.366	.208	.369	.211	.565
15	.516	.208	.519	.211	.715
21	.666	.208	.669	.211	.865
25	.766	.208	.769	.211	.965
31	.916	.208	.919	.211	1.115
37	1.066	.208	1.069	.211	1.265
51	1.016	.251	1.019	.254	1.215



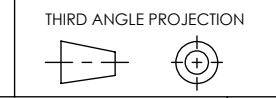
RECOMMENDED HOLE DETAIL SCALE 2:1

PIN END STYLE:
 A-STRAIGHT CUT
 B-STEPPED
 C-WIREBOND FLATS
 (SOLDERCUP SRIC101-1 AVAILABLE FOR WIRE ATTACH TO STRAIGHT CUT END CONFIGURATION)

UNLESS OTHERWISE SPECIFIED
 DIMENSIONING IAW ASME Y14.5M-1994
 DIMENSIONS APPLY AFTER PROCESSES
 DIMENSIONS IAW US CUSTOMARY UNITS
 .X±.1, .XX±.01, .XXX±.005, ∠ ±.5°
 .010 MAX OUTSIDE R, .005 MAX INSIDE R
 125 RMS SURFACE FINISH

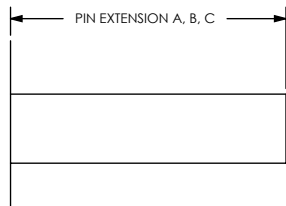
SRI HERMETICS (321) 254-4067
 WWW.SRIHERMETICS.COM

TITLE
 CONNECTOR, MICRO-D, REDUCED INTERFACE,
 ALUMINUM LASER WELDABLE



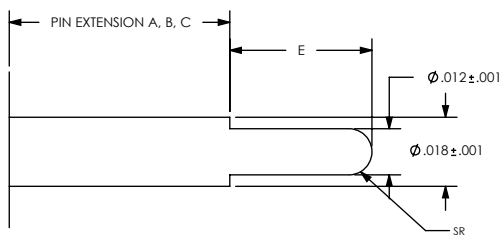
SIZE A	DOCUMENT SRIMD605	REV -
SCALE 4:1	CAGE CODE 3PJY7	SHEET 2 OF 3

STRAIGHT PIN END STYLE, A



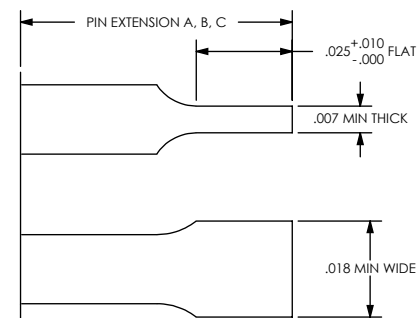
PART NUMBER	A	B	C
SRIMD605 - X - A1	.130	.130	.130

STEPPED PIN END STYLE, B



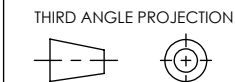
PART NUMBER	A	B	C	E
SRIMD605 - X - B1	.095	.095	.095	.037

WIREBOND FLAT PIN END STYLE, C



PART NUMBER	A	B	C
SRIMD605 - X - C 1	.090	.060	-
SRIMD605 - X - C 2	.180	.150	-

UNLESS OTHERWISE SPECIFIED
 DIMENSIONING IAW ASME Y14.5M-1994
 DIMENSIONS APPLY AFTER PROCESSES
 DIMENSIONS IAW US CUSTOMARY UNITS
 .X ± .1, .XX ± .01, .XXX ± .005, $\angle \pm .5^\circ$
 .010 MAX OUTSIDE R, .005 MAX INSIDE R
 125 RMS SURFACE FINISH



(321) 254-4067
 WWW.SRIHERMETICS.COM

TITLE
 CONNECTOR, MICRO-D, REDUCED INTERFACE,
 ALUMINUM LASER WELDABLE

SIZE A	DOCUMENT SRIMD605	REV -
SCALE 2:1	CAGE CODE 3PJY7	SHEET 3 OF 3