

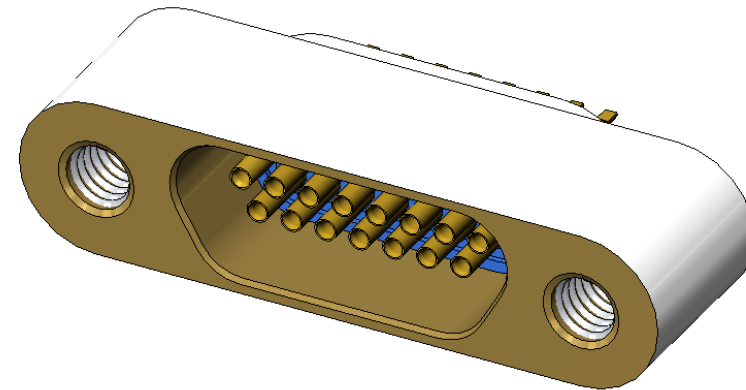
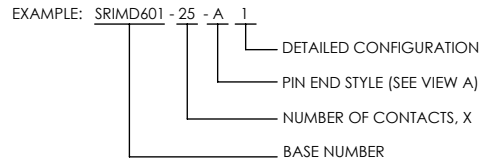
ALUMINUM COMPATIBLE LASER WELDABLE MICRO-D CONNECTOR


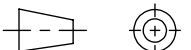
REVISIONS			
REV	CHANGE NO.	DATE	CFG APPROVAL
-	INIT RLSE	03-09-2009	J. PETRI

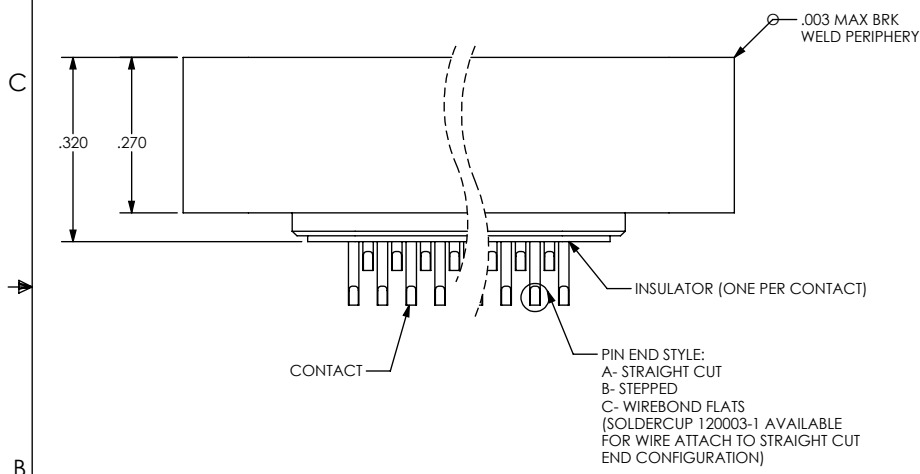
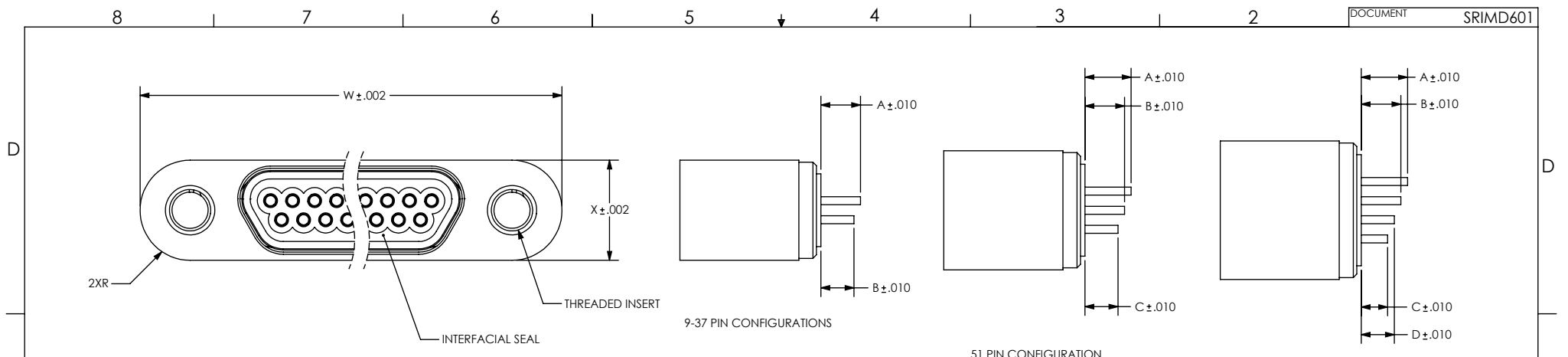
- CONFIGURATION WITH NO FLANGE FOR LOW PROFILE APPLICATIONS
- DESIGNED TO LASER WELD INTO AN ELECTRONIC CHASSIS WALL
- CONFORMS TO MIL-DTL-83513 AND ARE AVAILABLE IN 9, 15, 21, 25, 31, 37, 51, AND 100 COUNT PIN/SOCKET CONFIGURATIONS.
- INCORPORATES BERYLLIUM-COPPER PIN/SOCKETS INDIVIDUALLY SEALED USING CERAMAX® PROPRIETARY CERAMIC TO ESTABLISH A DURABLE HERMETIC SEAL.
- THE INTERNAL PINS CAN BE CONFIGURED TO ACCEPT INSULATED WIRE, AUTOMATIC WIRE BONDS, RIBBON WELDS, OR SOLDER CONNECTIONS.

1. LEAK RATE: LESS THAN OR EQUAL TO 1X10E-9 CC/SEC He AT ONE ATMOSPHERE DIFFERENTIAL PRESSURE.
2. INTERFACE AND MOUNTING HOLES IN ACCORDANCE WITH MIL-PRF-83513/2.
3. MATERIALS:
 CONTACT: BERYLLIUM-COPPER ALLOY 172/173 IN ACCORDANCE WITH ASTM B196/197.
 INSULATOR: CERAMAX PROPRIETARY CERAMIC.
 WELD FLANGE: ALUMINIUM ALLOY 4032 IN ACCORDANCE WITH ASTM B247.
 THREADED INSERTS: IN ACCORDANCE WITH NAS1130-02-15 (-9 THROUGH -51 CONFIGURATIONS) OR NAS1130-04-15 (-100 CONFIGURATION).
 INTERFACIAL SEAL: FLUOROSILICONE RUBBER PER MIL-R-25988, CLASS 1, TYPE II, GRADE 60.
4. FINISH:
 CONTACTS: NICKEL PLATE PER QQ-N-290, .000100 / .000250 THICK.
 GOLD PLATE PER ASTM B488-01, TYPE III, CODE A, .000050 / .000100 THICK.
 PLATE ENTIRE EXPOSED PIN, BOTH ENDS.
 PLATING IN SOCKETS NOT REQUIRED BENEATH BLEED HOLE.

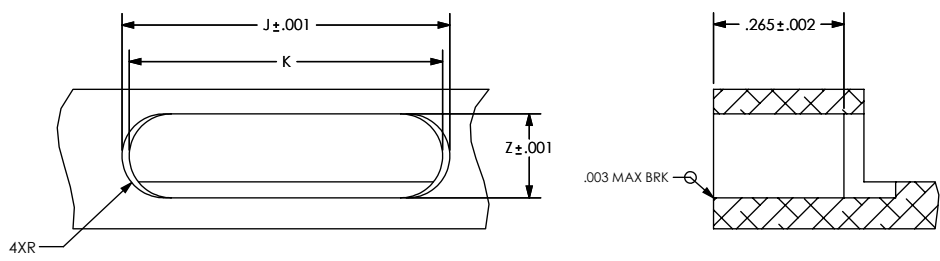
 SHELL: CHEMICAL CONVERSION COAT IN ACCORDANCE WITH MIL-C-5541, CLASS CL1A.
5. ORDERING INSTRUCTIONS:
 SPECIFY BASE NUMBER FOLLOWED BY DASH NUMBERS INDICATING PIN COUNT AND PIN CONFIGURATION:



UNLESS OTHERWISE SPECIFIED		 (321) 254-4067 WWW.SRIHERMETICS.COM	
DIMENSIONING IAW ASME Y14.5M-1994 DIMENSIONS APPLY AFTER PROCESSES DIMENSIONS IAW US CUSTOMARY UNITS .X ± .1, .XX ± .01, .XXX ± .005, ∠ ± .5° .010 MAX OUTSIDE R, .005 MAX INSIDE R 125 RMS SURFACE FINISH		TITLE	
THIRD ANGLE PROJECTION		CONNECTOR, MICRO-D, ALUMINUM LASER WELDABLE	
	SIZE A	DOCUMENT SRIMD601	REV -
SCALE 3:1	CAGE CODE 3PJY7	SHEET 1 OF 3	



VIEW A



SUGGESTED HOLE DETAIL

NUMBER OF CONTACTS	W	X	J	K	Z
9	0.775	0.227	0.778	0.728	0.230
15	0.925	0.227	0.928	0.878	0.230
21	1.075	0.227	1.078	1.028	0.230
25	1.175	0.227	1.178	1.128	0.230
31	1.325	0.227	1.328	1.278	0.230
37	1.475	0.227	1.478	1.428	0.230
51	1.425	0.270	1.428	1.378	0.273
100	2.012	0.314	2.015	1.965	0.317

UNLESS OTHERWISE SPECIFIED

DIMENSIONING IAW ASME Y14.5M-1994
 DIMENSIONS APPLY AFTER PROCESSES
 DIMENSIONS IAW US CUSTOMARY UNITS
 .X \pm .1, .XX \pm .01, .XXX \pm .005, \angle \pm .5°
 .010 MAX OUTSIDE R, .005 MAX INSIDE R
 125 RMS SURFACE FINISH

SRI HERMETICS (321) 254-4067
 WWW.SRIHERMETICS.COM

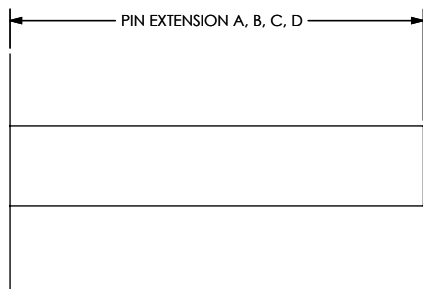
TITLE
 CONNECTOR, MICRO-D, ALUMINUM LASER WELDABLE

SIZE A DOCUMENT SRIMD601 REV -

SCALE 3:1 CAGE CODE 3PJY7 SHEET 2 OF 3

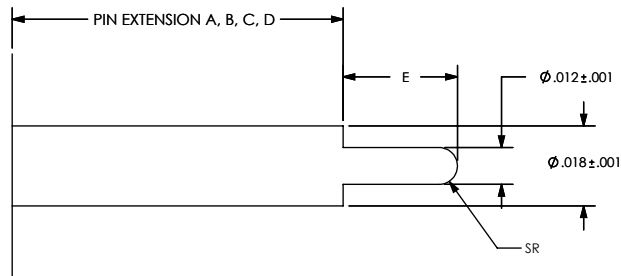
THIRD ANGLE PROJECTION

STRAIGHT PIN END STYLE, A



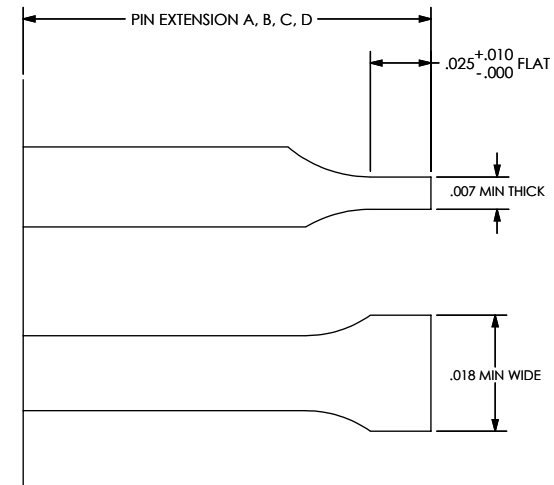
PART NUMBER	A	B	C	D
SRIMD601 - X - A 1	0.118	0.118	0.118	0.118

STEPPED PIN END STYLE, B



PART NUMBER	A	B	C	D	E
SRIMD601 - X - B 1	0.083	0.083	0.083	0.083	0.037

WIREBOND FLAT PIN END STYLE, C



PART NUMBER	A	B	C	D
SRIMD601 - X - C 1	0.110	0.050	-	-

UNLESS OTHERWISE SPECIFIED
 DIMENSIONING IAW ASME Y14.5M-1994
 DIMENSIONS APPLY AFTER PROCESSES
 DIMENSIONS IAW US CUSTOMARY UNITS
 .X ± .1, .XX ± .01, .XXX ± .005, ∠ ± .5°
 .010 MAX OUTSIDE R, .005 MAX INSIDE R
 125 RMS SURFACE FINISH

SRI HERMETICS (321) 254-4067
 WWW.SRIHERMETICS.COM

TITLE
 CONNECTOR, MICRO-D, ALUMINUM LASER WELDABLE

THIRD ANGLE PROJECTION

SIZE A	DOCUMENT SRIMD601	REV -
SCALE 3:1	CAGE CODE 3PJY7	SHEET 3 OF 3