

TITANIUM COMPATIBLE LASER WELDABLE MICRO-D CONNECTOR

REVISIONS			
REV	CHANGE NO.	DATE	APPROVED
-	INIT RLSE	10/07/2004	/S/ DC
A	DCN000027	12/13/2004	/S/ DC
B	DCN000467	4/8/2009	J. PETRI

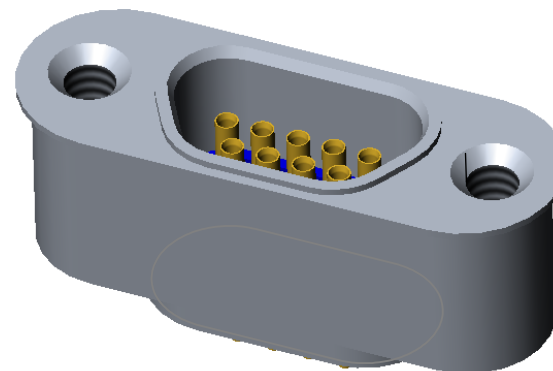
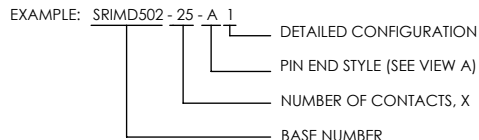
- CONFIGURATION SIMILAR TO THE TRADITIONAL MID-SECTION FLANGE STYLE EXCEPT THE FLANGE IS SMALLER AND LOCATED AT THE TOP OF THE CONNECTOR.
- ADVANTAGEOUS FOR LASER WELD INTO A LOW-PROFILE ELECTRONIC PACKAGE WHERE SPACE IS NOT AVAILABLE FOR THE TRADITIONAL MICRO-D CONFIGURATION OR WHERE THE FLUSH MOUNT IS PREFERRED.
- CONFORMS TO MIL-PRF-83513 AND ARE AVAILABLE IN 9, 15, 21, 25, 31, 37, 51, AND 100 COUNT PIN/SOCKET CONFIGURATIONS.
- INCORPORATES BERYLLIUM-COPPER PIN/SOCKETS INDIVIDUALLY SEALED USING CERAMAX® PROPRIETARY CERAMIC TO ESTABLISH A DURABLE HERMETIC SEAL.
- THE INTERNAL PINS CAN BE CONFIGURED TO ACCEPT INSULATED WIRE, AUTOMATIC WIRE BONDS, RIBBON WELDS, OR SOLDER CONNECTIONS.

1. LEAK RATE: LESS THAN OR EQUAL TO 1×10^{-9} CC/SEC H_e AT ONE ATMOSPHERE DIFFERENTIAL PRESSURE.
2. INTERFACE AND MOUNTING HOLES IN ACCORDANCE WITH MIL-PRF-83513/2.
3. MATERIALS:
 CONTACT: BERYLLIUM-COPPER ALLOY 172/173 IN ACCORDANCE WITH ASTM B196/197.
 INSULATOR: CERAMAX PROPRIETARY CERAMIC.
 WELD FLANGE: TITANIUM GRADE 4 IN ACCORDANCE WITH ASTM B265.
 INTERFACIAL SEAL: FLUOROSILICONE RUBBER PER MIL-R-25988, CLASS 1, TYPE II, GRADE 60.
4. FINISH:
 CONTACTS: NICKEL PLATE PER QQ-N-290, .000100/.000250 THICK.
 GOLD PLATE PER ASTM B488, TYPE III, CODE A, .000050/.000100 THICK.
 PLATE ENTIRE EXPOSED PIN, BOTH ENDS.
 PLATING IN SOCKETS NOT REQUIRED BENEATH BLEED HOLE.

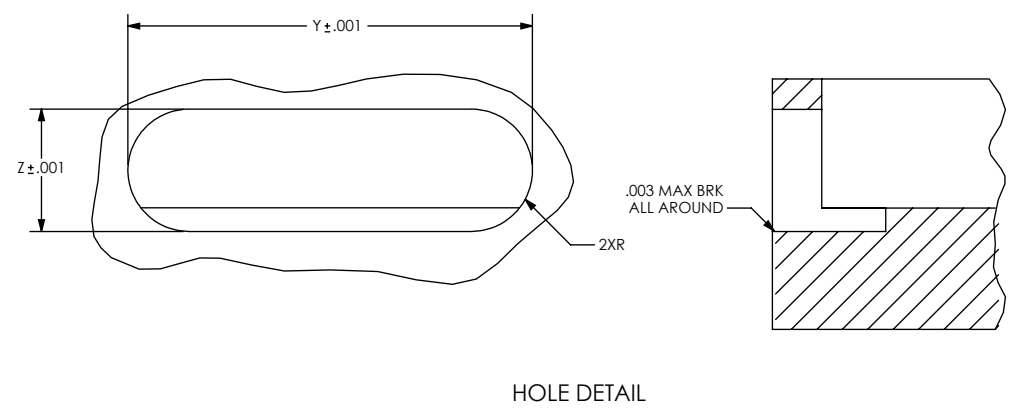
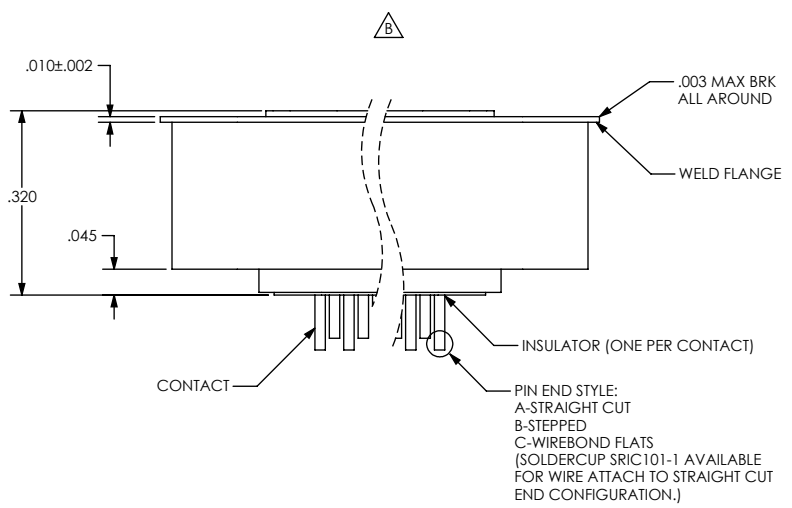
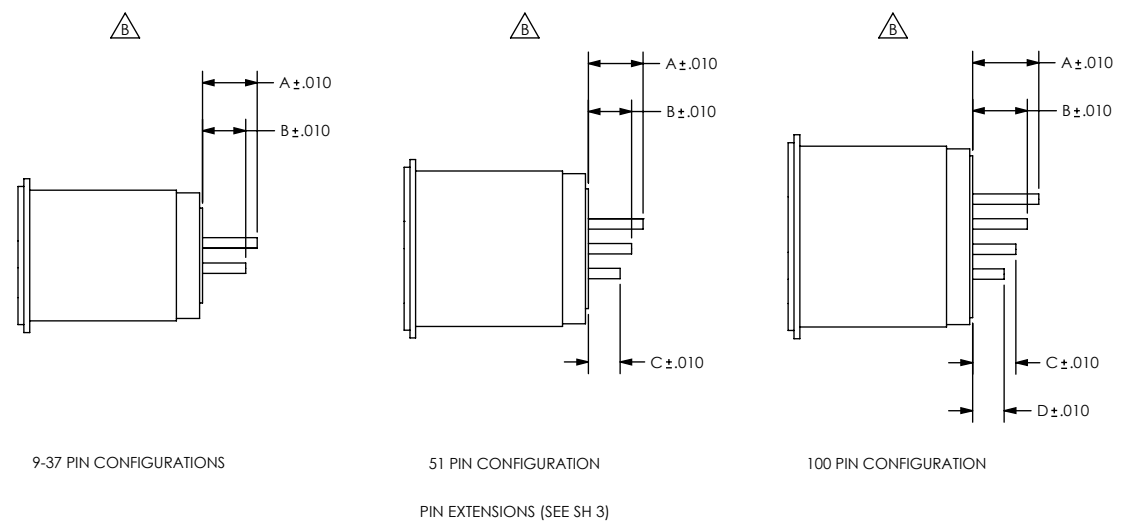
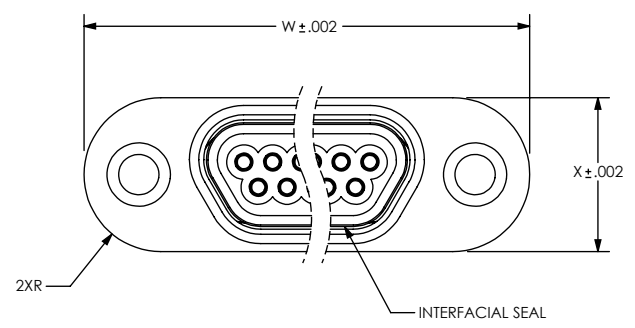


SHELL: PASSIVATED.

5. ORDERING INSTRUCTIONS:
 SPECIFY BASE NUMBER FOLLOWED BY DASH NUMBERS INDICATING PIN COUNT AND CONFIGURATION (SEE SHEET 2+):



UNLESS OTHERWISE SPECIFIED DIMENSIONING IAW ASME Y14.5M-1994 DIMENSIONS APPLY AFTER PROCESSES DIMENSIONS IAW US CUSTOMARY UNITS .X ± .1, .XX ± .01, .XXX ± .005, ∠ ± .5° .010 MAX OUTSIDE R, .005 MAX INSIDE R 125 RMS SURFACE FINISH		(321) 254-4067 WWW.SRIHERMETICS.COM	
THIRD ANGLE PROJECTION 		TITLE CONNECTOR, MICRO-D, TITANIUM LASER WELDABLE	
SIZE A	DOCUMENT SRIMD502	REV B	
SCALE 3:1	CAGE CODE 3PJY7	SHEET 1 OF 3	



VIEW A

HOLE DETAIL

NUMBER OF CONTACTS	W	X	Y	Z
9	0.755	0.267	0.718	0.230
15	0.905	0.267	0.868	0.230
21	1.055	0.267	1.018	0.230
25	1.155	0.267	1.118	0.230
31	1.305	0.267	1.268	0.230
37	1.455	0.267	1.418	0.230
51	1.405	0.310	1.368	0.273
100	2.020	0.384	1.983	0.347

UNLESS OTHERWISE SPECIFIED
 DIMENSIONING IAW ASME Y14.5M-1994
 DIMENSIONS APPLY AFTER PROCESSES
 DIMENSIONS IAW US CUSTOMARY UNITS
 .X ± .1, .XX ± .01, .XXX ± .005, ∠ ± .5°
 .010 MAX OUTSIDE R, .005 MAX INSIDE R
 125 RMS SURFACE FINISH

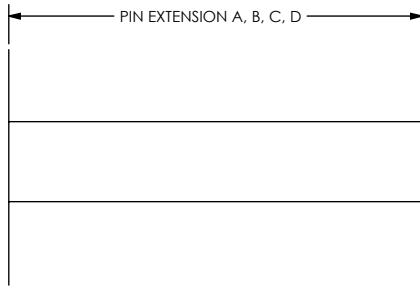
THIRD ANGLE PROJECTION

SRI HERMETICS (321) 254-4067
 WWW.SRIHERMETICS.COM

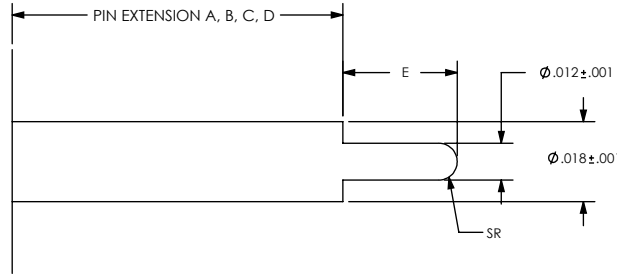
TITLE
 CONNECTOR, MICRO-D, TITANIUM LASER WELDABLE

SIZE A DOCUMENT SRIMD502 REV B
 SCALE 3:1 CAGE CODE 3PJY7 SHEET 2 OF 3

STRAIGHT PIN END STYLE, A

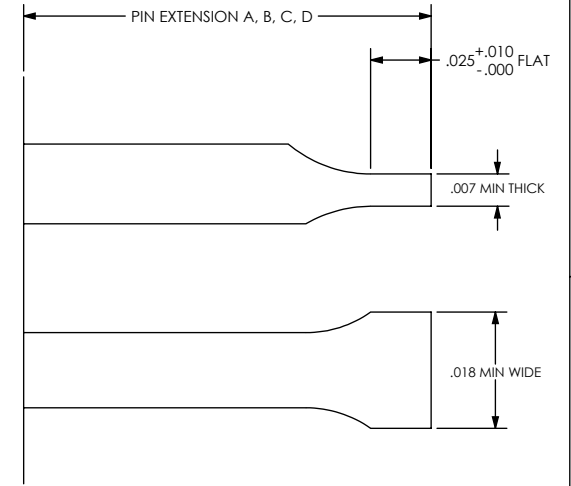


STEPPED PIN END STYLE, B



PART NUMBER	A	B	C	D	E
SRIMD502 - X - B 1	.083	.083	.083	.083	.037

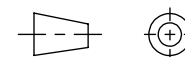
WIREBOND FLAT PIN END STYLE, C



PART NUMBER	A	B	C	D
SRIMD502 - X - C 1	.145	.110	.075	.040
SRIMD502 - X - C 2	.110	.065	-	-
SRIMD502 - X - C 3	.090	.118	-	-
SRIMD502 - X - C 4	.075	.050	-	-

UNLESS OTHERWISE SPECIFIED
 DIMENSIONING IAW ASME Y14.5M-1994
 DIMENSIONS APPLY AFTER PROCESSES
 DIMENSIONS IAW US CUSTOMARY UNITS
 .X ± .1, .XX ± .01, .XXX ± .005, ∠ ± .5°
 .010 MAX OUTSIDE R, .005 MAX INSIDE R
 125 RMS SURFACE FINISH

THIRD ANGLE PROJECTION



(321) 254-4067
 WWW.SRIHERMETICS.COM

TITLE
 CONNECTOR, MICRO-D, TITANIUM LASER WELDABLE

SIZE A	DOCUMENT SRIMD502	REV B
SCALE 3:1	CAGE CODE 3PJY7	SHEET 3 OF 3