

SRIMD2002 CONNECTOR, MICRO-D, WIRED, O-RING PANEL MOUNT

REVISIONS			
REV	CHANGE NO.	DATE	CFG APPROVAL
-	INIT RLSE	09-27-06	J. PETRI
A	DCN000225	2/12/2007	J. PETRI
B	DCN000327	5/5/2008	J. PETRI
C	DCN000742	7/27/2010	J. PETRI
D	DCN000882	9/29/2011	J. PETRI
E	DCN000998	4/23/2012	

- DESIGNED FOR PANEL-MOUNT WITH AN O-RING SEAL
- AVAILABLE IN STAINLESS STEEL
- CONFORMS TO MIL-PRF-83513 AND ARE AVAILABLE IN 9, 15, 21, 25, 31, 37, 51, AND 100 COUNT PIN/SOCKET CONFIGURATIONS.
- INCORPORATES BERYLLIUM-COPPER PIN/SOCKETS INDIVIDUALLY SEALED USING CERAMAX® PROPRIETARY CERAMIC TO ESTABLISH A DURABLE HERMETIC SEAL.

1. LEAK RATE: LESS THAN OR EQUAL TO 1X10E-9 CC/SEC He AT ONE ATMOSPHERE DIFFERENTIAL PRESSURE.

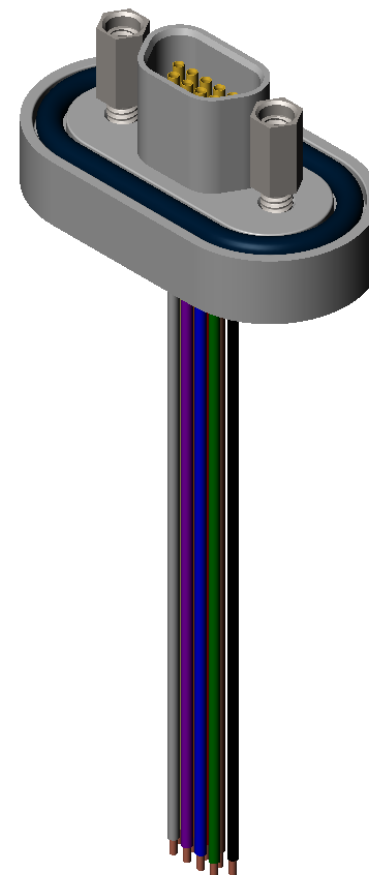
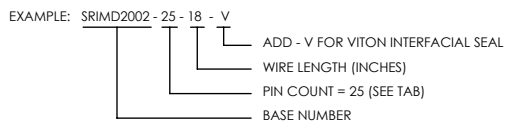
2. INTERFACE AND MOUNTING HOLES IN ACCORDANCE WITH MIL-PRF-83513/2.


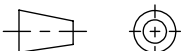
3. MATERIALS:
 CONTACT: BERYLLIUM-COPPER ALLOY 172/173 PER ASTM B196/197.
 INSULATOR: CERAMAX PROPRIETARY CERAMIC.
 SHELL: STAINLESS STEEL ALLOY 304L PER SAE-AMS-QQ-S-763.
 INTERFACIAL SEAL: FLUOROSILICONE RUBBER PER MIL-R-25988, CLASS I, TYPE II, GRADE 60 OR FLUOROCARBON RUBBER (VITON®)
 O-RING GASKET: FLUOROCARBON RUBBER, BLACK (VITON®)
 JACKPOST: STAINLESS STEEL 302 OR 303 PER SAE-AMS-QQ-S-763
 WIRE: COLOR CODED, INSULATED 7-STRAND 26AWG COATED COPPER PER HP3-EX8DB()

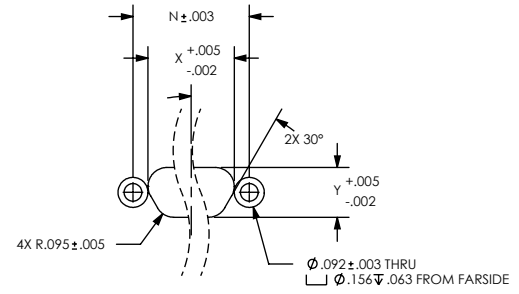
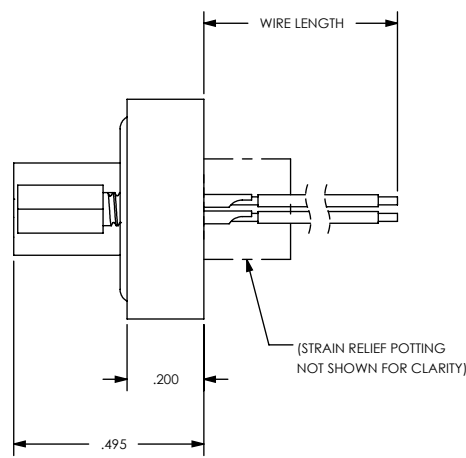
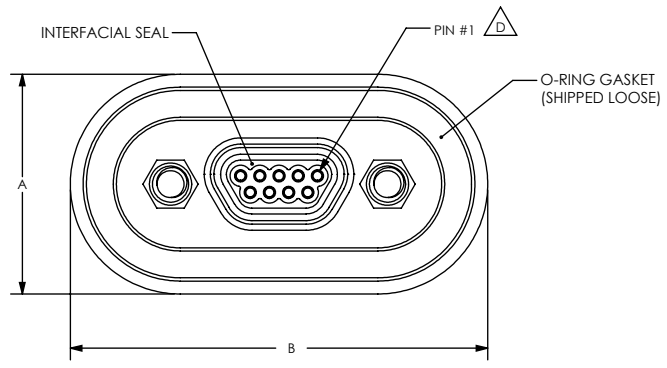
4. FINISH:
 CONTACTS: NICKEL PLATE PER QQ-N-290, .000100 / .000250 THICK.
 GOLD PLATE PER ASTM B488-01, TYPE III, CODE A, .000050 / .000125 THICK.
 PLATE ENTIRE EXPOSED PIN, BOTH ENDS.
 PLATING IN SOCKETS NOT REQUIRED BENEATH BLEED HOLE.

SHELL: PASSIVATED.

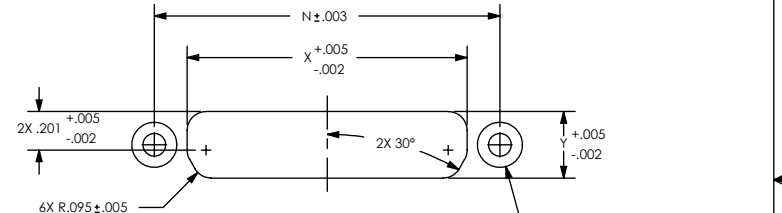
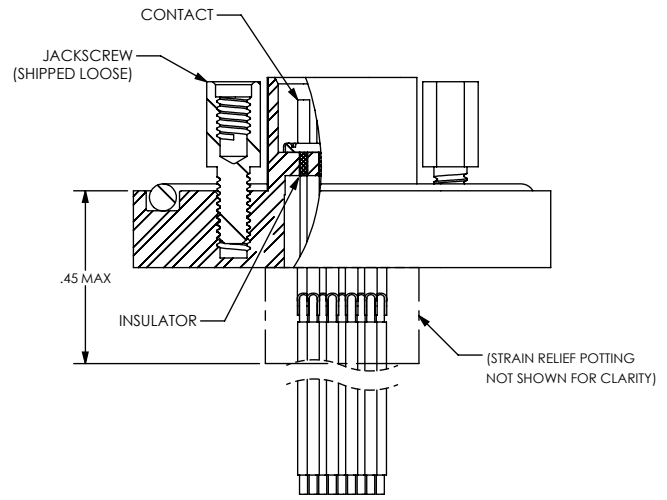
5. ORDERING INSTRUCTIONS:
 SPECIFY BASE NUMBER FOLLOWED BY DASH NUMBERS INDICATING PIN COUNT AND CONFIGURATION (SEE SHEET 2+):



UNLESS OTHERWISE SPECIFIED		 (321) 254-4067 WWW.SRIHERMETICS.COM	
DIMENSIONING IAW ASME Y14.5M-1994 DIMENSIONS APPLY AFTER PROCESSES DIMENSIONS IAW US CUSTOMARY UNITS .X ± .1, .XX ± .01, .XXX ± .005, ∠ ± .5° .010 MAX OUTSIDE R, .005 MAX INSIDE R 125 RMS SURFACE FINISH		TITLE	
		CONNECTOR, MICRO-D, SST PANEL MOUNT, WIRED	
THIRD ANGLE PROJECTION		SIZE A	DOCUMENT SRIMD2002
		SCALE 1:1	REV E
		CAGE CODE 3PJY7	SHEET 1 OF 2

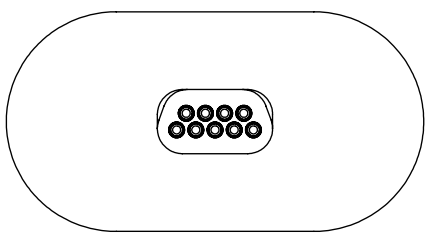


PANEL CUTOUT DETAIL (9-51 PIN CONFIGURATIONS)



PANEL CUTOUT DETAIL (100 PIN CONFIGURATION)

NUMBER OF CONTACTS	A	B	X	Y	N
9	0.572	1.087	0.408	0.259	0.565
15	0.572	1.284	0.558	0.259	0.715
21	0.572	1.383	0.708	0.259	0.865
25	0.572	1.480	0.808	0.259	0.965
31	0.572	1.676	0.958	0.259	1.115
37	0.572	1.775	1.108	0.259	1.265
51	0.615	1.751	1.058	0.302	1.215
100	0.659	2.315	1.458	0.346	1.800



UNLESS OTHERWISE SPECIFIED
DIMENSIONING IAW ASME Y14.5M-1994
DIMENSIONS APPLY AFTER PROCESSES
DIMENSIONS IAW US CUSTOMARY UNITS
 $X \pm .1, .XX \pm .01, .XXX \pm .005, \angle \pm .5^\circ$
.010 MAX OUTSIDE R, .005 MAX INSIDE R
125 RMS SURFACE FINISH

SRI HERMETICS (321) 254-4067
WWW.SRIHERMETICS.COM

TITLE
CONNECTOR, MICRO-D, SST PANEL MOUNT, WIRED

THIRD ANGLE PROJECTION

SIZE A DOCUMENT SRIMD2002 REV E
SCALE 1:1 CAGE CODE 3PJY7 SHEET 2 OF 2