


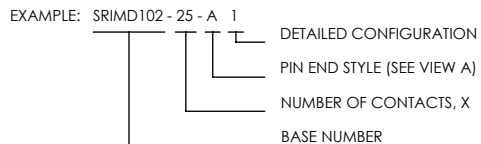
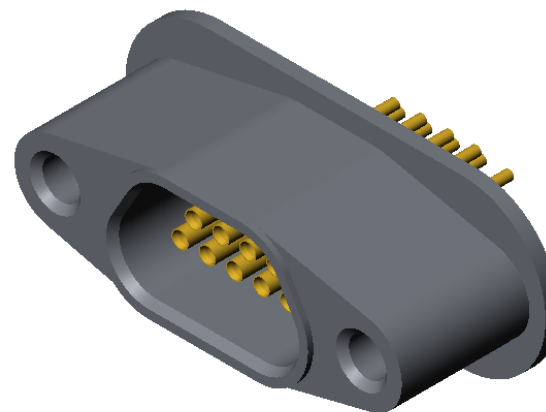
TITANIUM COMPATIBLE LASER WELDABLE MICRO-D CONNECTOR


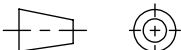
- TRADITIONAL CONFIGURATION WITH THE FLANGE LOCATED AT THE MIDSECTION OF THE CONNECTOR
- DESIGNED TO LASER WELD INTO AN ELECTRONIC CHASSIS WALL
- CONFORMS TO MIL-PRF-83513 AND ARE AVAILABLE IN 9, 15, 21, 25, 31, 37, 51, AND 100 COUNT PIN/SOCKET CONFIGURATIONS.
- INCORPORATES BERYLLIUM-COPPER PIN/SOCKETS INDIVIDUALLY SEALED USING CERAMAX® PROPRIETARY CERAMIC TO ESTABLISH A DURABLE HERMETIC SEAL.
- THE INTERNAL PINS CAN BE CONFIGURED TO ACCEPT INSULATED WIRE, AUTOMATIC WIRE BONDS, RIBBON WELDS, OR SOLDER CONNECTIONS.

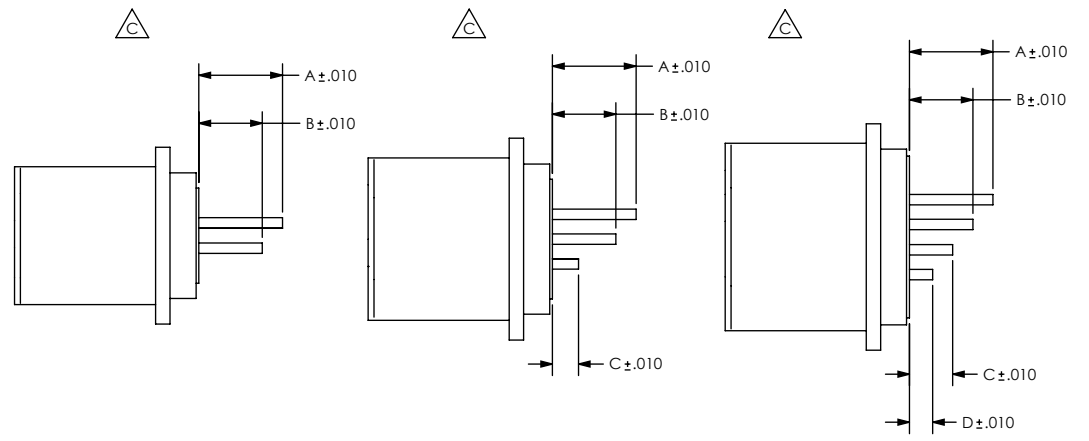
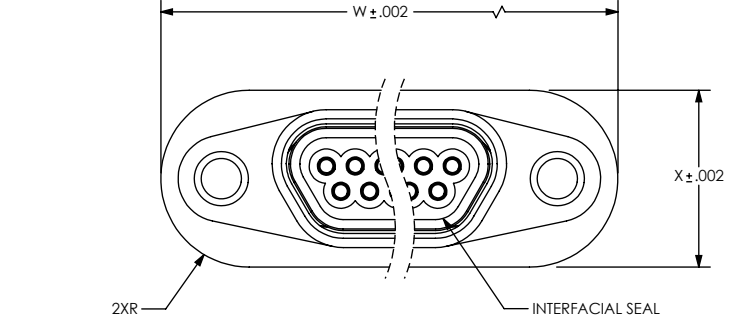
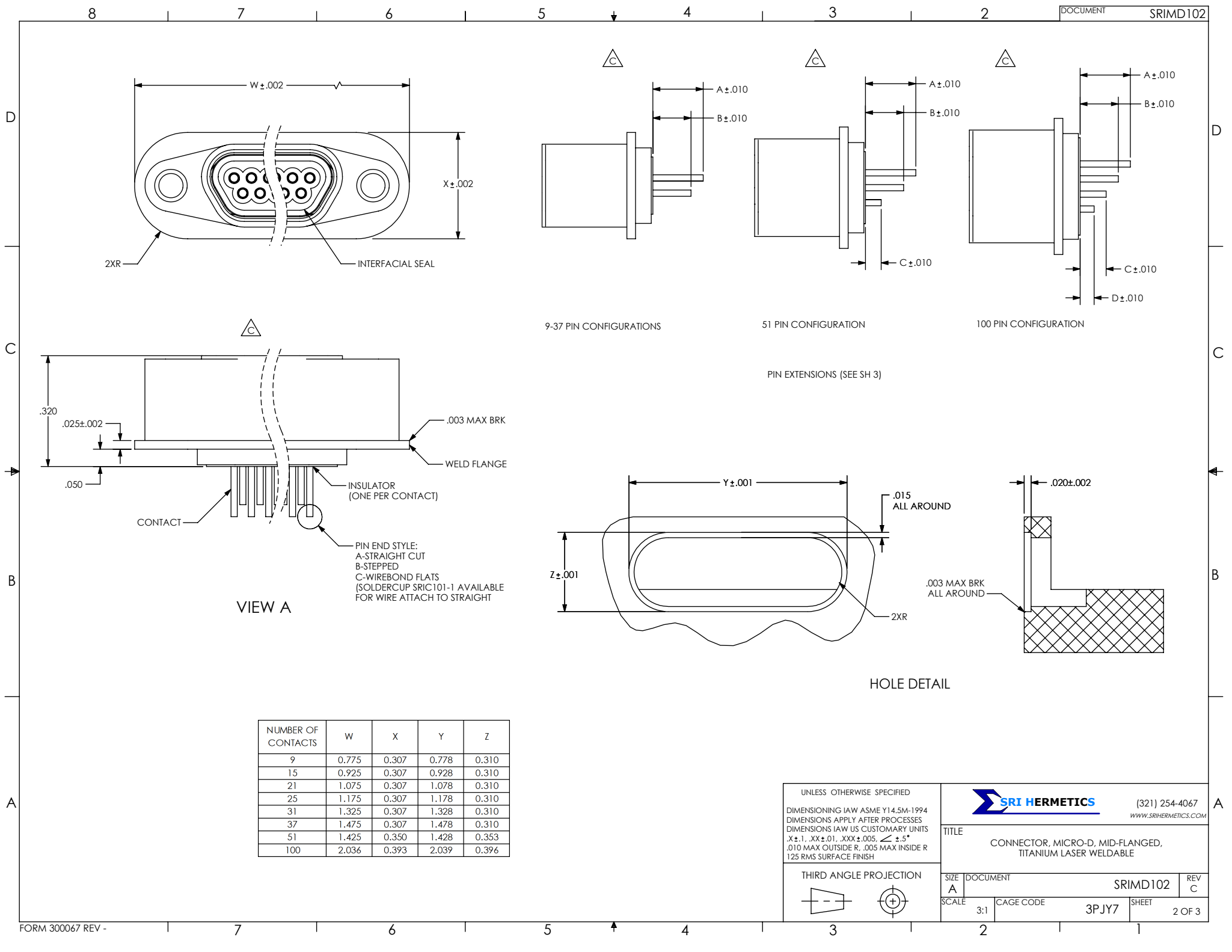
REVISIONS			
REV	CHANGE NO.	DATE	APPROVED
-	INIT RLSE	10/01/2004	/S/ DC
A	DCN000026	12/13/2004	/S/ DC
B	DCN000222	1/30/2007	J. PETRI
C	DCN000466	4/7/2009	J. PETRI

1. LEAK RATE: LESS THAN OR EQUAL TO 1X10E-9 CC/SEC He AT ONE ATMOSPHERE DIFFERENTIAL PRESSURE.
2. INTERFACE AND MOUNTING HOLES IN ACCORDANCE WITH MIL-PRF-83513/2.
3. MATERIALS:
 CONTACT: BERYLLIUM-COPPER ALLOY 172/173 IN ACCORDANCE WITH ASTM B196/197.
 INSULATOR: CERAMAX PROPRIETARY CERAMIC.
 WELD FLANGE: TITANIUMGR2 (UNALLOYED) IN ACCORDANCE WITH ASTM B265.
 INTERFACIAL SEAL: FLUOROSILICONE RUBBER PER MIL-R-25988, CLASS 1, TYPE II, GRADE 60. 
4. FINISH:
 CONTACTS: NICKEL PLATE PER QQ-N-290, .000100 / .000250 THICK.
 GOLD PLATE PER ASTM B488, TYPE III, CODE A, .000050 / .000100 THICK.
 PLATE ENTIRE EXPOSED PIN, BOTH ENDS.
 PLATING IN SOCKETS NOT REQUIRED BENEATH BLEED HOLE.

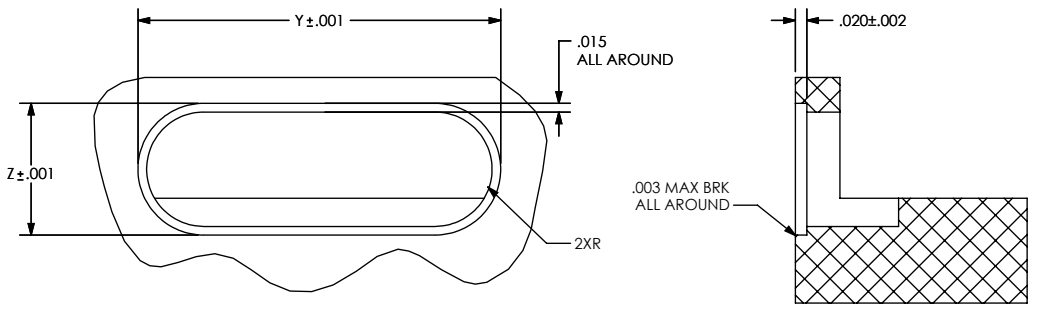
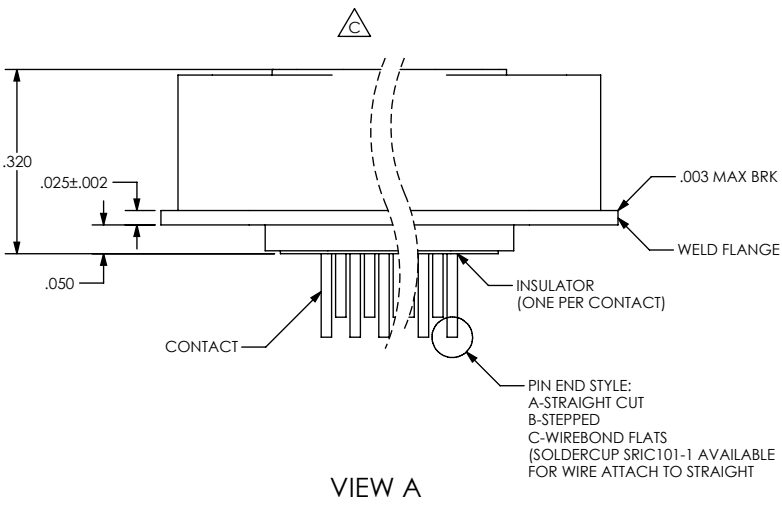
 SHELL: PASSIVATED.
5. ORDERING INSTRUCTIONS:
 SPECIFY BASE NUMBER FOLLOWED BY DASH NUMBERS INDICATING PIN COUNT AND CONFIGURATION (SEE SHEET 2+):



UNLESS OTHERWISE SPECIFIED		 (321) 254-4067 WWW.SRIHERMETICS.COM	
DIMENSIONING IAW ASME Y14.5M-1994 DIMENSIONS APPLY AFTER PROCESSES DIMENSIONS IAW US CUSTOMARY UNITS .X ± .1, .XX ± .01, .XXX ± .005, ∠ ± .5° .010 MAX OUTSIDE R, .005 MAX INSIDE R 125 RMS SURFACE FINISH		TITLE CONNECTOR, MICRO-D, MID-FLANGED, TITANIUM LASER WELDABLE	
THIRD ANGLE PROJECTION 		SIZE A	DOCUMENT SRIMD102
SCALE 4:1		CAGE CODE 3PJY7	REV C SHEET 1 OF 3



9-37 PIN CONFIGURATIONS 51 PIN CONFIGURATION 100 PIN CONFIGURATION
PIN EXTENSIONS (SEE SH 3)



HOLE DETAIL

NUMBER OF CONTACTS	W	X	Y	Z
9	0.775	0.307	0.778	0.310
15	0.925	0.307	0.928	0.310
21	1.075	0.307	1.078	0.310
25	1.175	0.307	1.178	0.310
31	1.325	0.307	1.328	0.310
37	1.475	0.307	1.478	0.310
51	1.425	0.350	1.428	0.353
100	2.036	0.393	2.039	0.396

UNLESS OTHERWISE SPECIFIED
 DIMENSIONING IAW ASME Y14.5M-1994
 DIMENSIONS APPLY AFTER PROCESSES
 DIMENSIONS IAW US CUSTOMARY UNITS
 .X ± .1, .XX ± .01, .XXX ± .005, ∠ ± .5°
 .010 MAX OUTSIDE R, .005 MAX INSIDE R
 125 RMS SURFACE FINISH

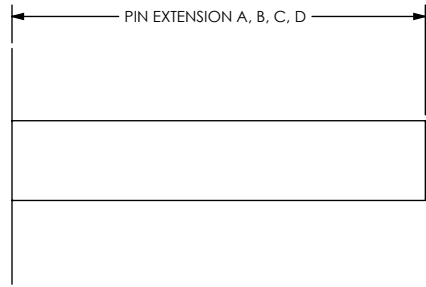
SRI HERMETICS (321) 254-4067
 WWW.SRIHERMETICS.COM

TITLE: CONNECTOR, MICRO-D, MID-FLANGED, TITANIUM LASER WELDABLE

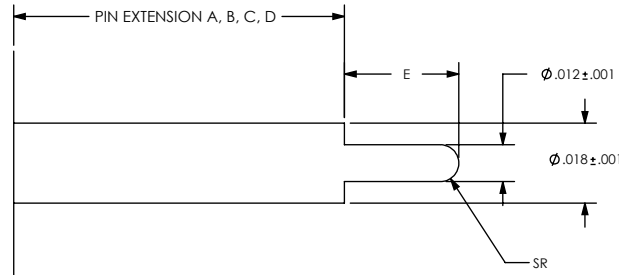
SIZE: A DOCUMENT SRIMD102 REV: C
 SCALE: 3:1 CAGE CODE 3PJY7 SHEET 2 OF 3

THIRD ANGLE PROJECTION

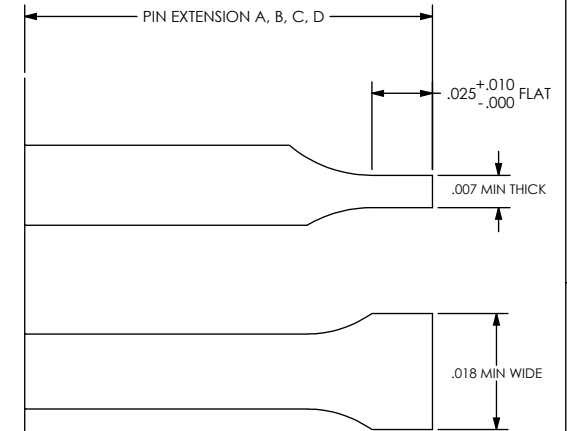
STRAIGHT PIN END STYLE, A



STEPPED PIN END STYLE, B



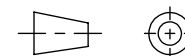
WIREBOND FLAT PIN END STYLE, C



PART NUMBER	A	B	C	D
SRIMD102 - X - A 1	.500	.500	.500	.500

UNLESS OTHERWISE SPECIFIED
 DIMENSIONING IAW ASME Y14.5M-1994
 DIMENSIONS APPLY AFTER PROCESSES
 DIMENSIONS IAW US CUSTOMARY UNITS
 .X ± .1, .XX ± .01, .XXX ± .005, ∠ ± .5°
 .010 MAX OUTSIDE R, .005 MAX INSIDE R
 125 RMS SURFACE FINISH

THIRD ANGLE PROJECTION



(321) 254-4067
 WWW.SRIHERMETICS.COM

TITLE			
CONNECTOR, MICRO-D, MID-FLANGED, TITANIUM LASER WELDABLE			
SIZE	DOCUMENT	SRIMD102	REV
A			C
SCALE	CAGE CODE	3PJY7	SHEET
3:1			3 OF 3