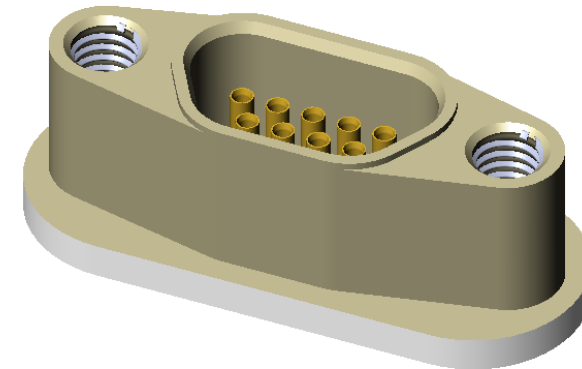
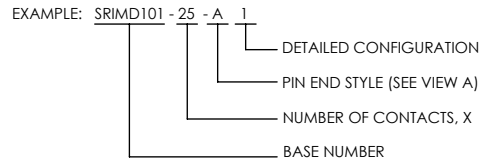



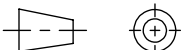
# ALUMINUM COMPATIBLE LASER WELDABLE MICRO-D CONNECTOR

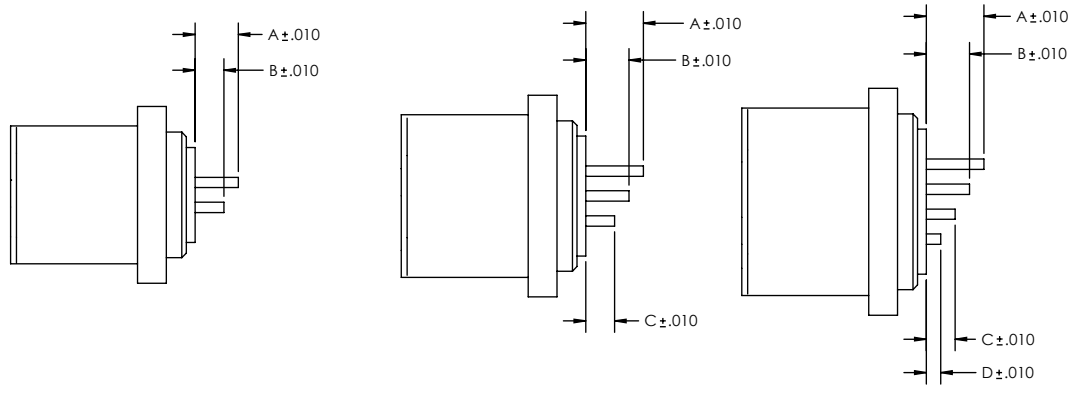
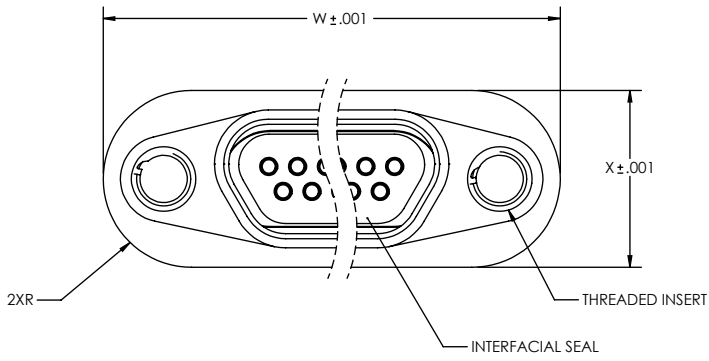
- TRADITIONAL CONFIGURATION WITH THE FLANGE LOCATED AT THE MIDSECTION OF THE CONNECTOR
- DESIGNED TO LASER WELD INTO AN ELECTRONIC CHASSIS WALL
- CONFORMS TO MIL-DTL-83513 AND ARE AVAILABLE IN 9, 15, 21, 25, 31, 37, 51, AND 100 COUNT PIN/SOCKET CONFIGURATIONS.
- INCORPORATES BERYLLIUM-COPPER PIN/SOCKETS INDIVIDUALLY SEALED USING CERAMAX® PROPRIETARY CERAMIC TO ESTABLISH A DURABLE HERMETIC SEAL.
- THE INTERNAL PINS CAN BE CONFIGURED TO ACCEPT INSULATED WIRE, AUTOMATIC WIRE BONDS, RIBBON WELDS, OR SOLDER CONNECTIONS.

REVISIONS			
REV	CHANGE NO.	DATE	APPROVED
-	INIT RLSE	08/01/2004	/S/ DC
A	DCN000025	12/13/2004	/S/ DC
B	DCN000092	9/13/2005	JP
C	DCN000096	10/26/2005	JP
D	DCN000145	7/24/2006	J. PETRI
E	DCN000232	4/10/2007	J. PETRI
F	DCN000306	6/2/2008	J. PETRI
H	DCN000360	8/18/2008	J. PETRI
J	DCN000446	2/24/2009	J. PETRI
K	DCN000738	10/21/2010	J. PETRI

1. LEAK RATE: LESS THAN OR EQUAL TO 1X10E-9 CC/SEC He AT ONE ATMOSPHERE DIFFERENTIAL PRESSURE.
2. INTERFACE AND MOUNTING HOLES IN ACCORDANCE WITH MIL-PRF-83513/2.
3. MATERIALS:  
 CONTACT: BERYLLIUM-COPPER ALLOY 172/173 IN ACCORDANCE WITH ASTM B196/197.  
 INSULATOR: CERAMAX PROPRIETARY CERAMIC.  
 WELD FLANGE: ALUMINUM ALLOY 4032 IN ACCORDANCE WITH ASTM B247.  
 THREADED INSERTS: IN ACCORDANCE WITH NAS1130-02-15 (-9 THROUGH -51 CONFIGURATIONS) OR NAS1130-04-15 (-100 CONFIGURATION).  
 INTERFACIAL SEAL: FLUOROSILICONE RUBBER PER MIL-R-25988, CLASS 1, TYPE II, GRADE 60.
4. FINISH:  
 CONTACTS: NICKEL PLATE PER QQ-N-290, .000100 / .000250 THICK.  
 GOLD PLATE PER ASTM B488-01, TYPE III, CODE A, .000050 / .000100 THICK.  
 PLATE ENTIRE EXPOSED PIN, BOTH ENDS.  
 PLATING IN SOCKETS NOT REQUIRED BENEATH BLEED HOLE.  
  
 SHELL: CHEMICAL CONVERSION COAT IN ACCORDANCE WITH MIL-C-5541, CLASS CL1A.
5. ORDERING INSTRUCTIONS:  
 SPECIFY BASE NUMBER FOLLOWED BY DASH NUMBERS INDICATING PIN COUNT AND PIN CONFIGURATION:



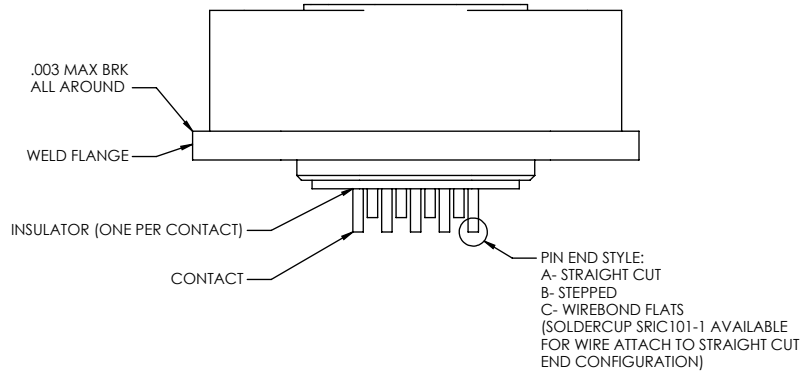
UNLESS OTHERWISE SPECIFIED		 (321) 254-4067 WWW.SRIHERMETICS.COM	
DIMENSIONING IAW ASME Y14.5M-1994 DIMENSIONS APPLY AFTER PROCESSES DIMENSIONS IAW US CUSTOMARY UNITS .X ± .1, .XX ± .01, .XXX ± .005, ∠ ± .5° .010 MAX OUTSIDE R, .005 MAX INSIDE R 125 RMS SURFACE FINISH			
THIRD ANGLE PROJECTION		TITLE	
		CONNECTOR, MICRO-D, ALUMINUM LASER WELDABLE	
SIZE	DOCUMENT	SRIMD101	REV
A			K
SCALE	CAGE CODE	3PJY7	SHEET
3:1			1 OF 3



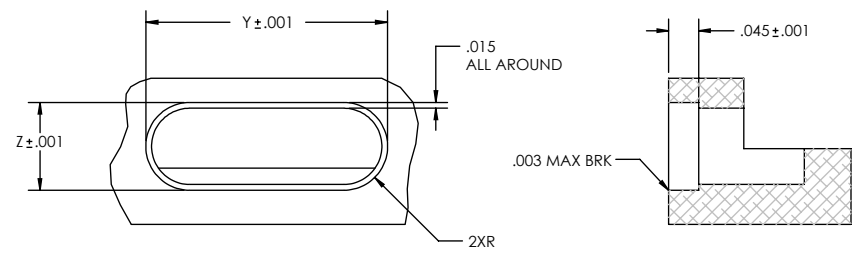
9-37 PIN CONFIGURATIONS  
PIN EXTENSIONS (SEE SH 3)

51 PIN CONFIGURATION  
PIN EXTENSIONS (SEE SH 3)

100 PIN CONFIGURATION  
PIN EXTENSIONS (SEE SH 3)



VIEW A



SUGGESTED HOLE DETAIL

NUMBER OF CONTACTS	W	X	Y	Z
9	0.775	0.307	0.778	0.310
15	0.925	0.307	0.928	0.310
21	1.075	0.307	1.078	0.310
25	1.175	0.307	1.178	0.310
31	1.325	0.307	1.328	0.310
37	1.475	0.307	1.478	0.310
51	1.425	0.350	1.428	0.353
100	2.012	0.393	2.015	0.396

UNLESS OTHERWISE SPECIFIED  
 DIMENSIONING IAW ASME Y14.5M-1994  
 DIMENSIONS APPLY AFTER PROCESSES  
 DIMENSIONS IAW US CUSTOMARY UNITS  
 .X ± .1, .XX ± .01, .XXX ± .005, ∠ ± .5°  
 .010 MAX OUTSIDE R, .005 MAX INSIDE R  
 125 RMS SURFACE FINISH

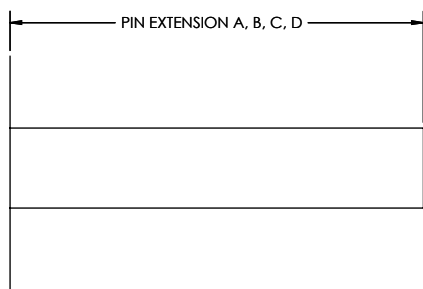
**SRI HERMETICS** (321) 254-4067  
 WWW.SRIHERMETICS.COM

TITLE  
 CONNECTOR, MICRO-D, ALUMINUM LASER WELDABLE

THIRD ANGLE PROJECTION

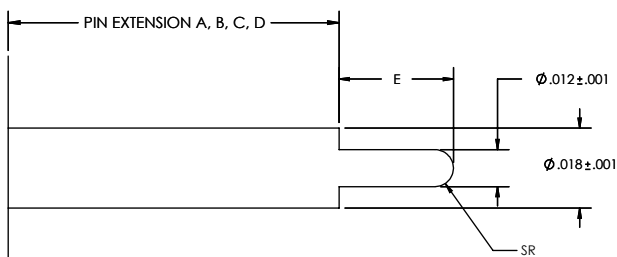
SIZE A	DOCUMENT SRIMD101	REV K
SCALE 3:1	CAGE CODE 3PJY7	SHEET 2 OF 3

STRAIGHT PIN END STYLE, A



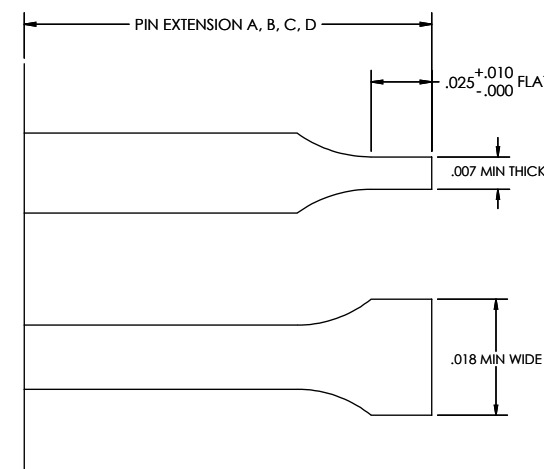
PART NUMBER	A	B	C	D	PIN END CONFIGURATION
SRIMD101 - X - A 1	0.040	0.040	0.040	0.040	FLAT
SRIMD101 - X - A 2	0.075	0.075	0.075	0.075	FLAT
SRIMD101 - X - A 3	0.118	0.118	0.118	0.118	FLAT
SRIMD101 - X - A 4	0.200	0.200	0.200	0.200	FLAT
SRIMD101 - X - A 5	0.180	0.180	0.180	0.180	FLAT
SRIMD101 - X - A 6	0.155	0.155	0.155	0.155	FLAT
SRIMD101 - X - A7	0.219	0.219	0.219	0.219	FULL RADIUS
SRIMD101 - X - A8	0.140	0.140	0.140	0.140	FULL RADIUS

STEPPED PIN END STYLE, B



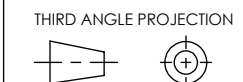
PART NUMBER	A	B	C	D	E
SRIMD101 - X - B 1	0.083	0.083	0.083	0.083	0.037
SRIMD101 - X - B 2	0.080	0.080	0.080	0.080	0.060
SRIMD101 - X - B 3	0.210	0.210	0.210	0.210	0.060

WIREBOND FLAT PIN END STYLE, C



PART NUMBER	A	B	C	D
SRIMD101 - X - C 1	0.110	0.075	-	-
SRIMD101 - X - C 2	0.110	0.060	-	-
SRIMD101 - X - C 3	0.110	0.050	-	-
SRIMD101 - X - C 4	0.100	0.160	-	-
SRIMD101 - X - C 5	0.050	0.110	-	-
SRIMD101 - X - C 6	0.110	0.090	-	-
SRIMD101 - X - C 7	0.080	0.050	-	-

UNLESS OTHERWISE SPECIFIED  
 DIMENSIONING IAW ASME Y14.5M-1994  
 DIMENSIONS APPLY AFTER PROCESSES  
 DIMENSIONS IAW US CUSTOMARY UNITS  
 .X ± .1, .XX ± .01, .XXX ± .005, ∠ ± .5°  
 .010 MAX OUTSIDE R, .005 MAX INSIDE R  
 125 RMS SURFACE FINISH



(321) 254-4067  
 WWW.SRIHERMETICS.COM

TITLE			
CONNECTOR, MICRO-D, ALUMINUM LASER WELDABLE			
SIZE	DOCUMENT	SRIMD101	REV
A			K
SCALE	CAGE CODE	3PJY7	SHEET
3:1			3 OF 3