

ALUMINUM COMPATIBLE LASER WELDABLE 50 OHM FEEDTHROUGH SMPM/SMPM ADAPTABLE,

- CONFIGURATION FOR INTERFACING TO SMP AND SMPM BULLET ADAPTERS
- DESIGNED TO PRESS FIT AND LASER WELD INTO AN ELECTRONIC CHASSIS
- INDUSTRY STANDARD NICKEL-IRON-COBALT ALLOY CONTACT WITH CORNING 7070 EQUIVALENT GLASS

REVISIONS			
REV	DCN	REVISION DATE	RELEASE APPROVAL
-	INIT RLSE	-	
A	DCN001087	11/15/2012	

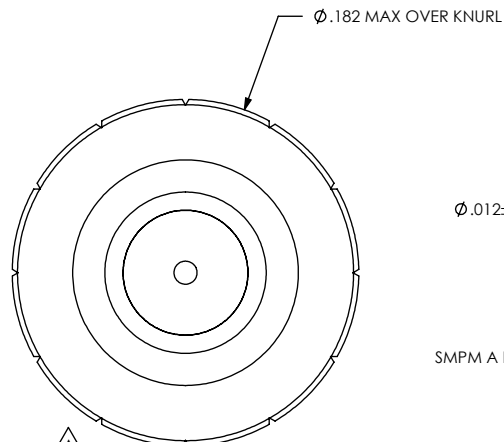
1. LEAK RATE: LESS THAN OR EQUAL TO 1×10^{-9} CC/SEC H_e AT ONE ATMOSPHERE DIFFERENTIAL PRESSURE.
2. NOMINAL IMPEDANCE: 50 OHMS
3. INTERFACE IN ACCORDANCE WITH MIL-STD-348, SERIES SMPM .
4. MATERIALS:
PIN: NICKEL-IRON-COBALT ALLOY IN ACCORDANCE WITH ASTM F15.
DIELECTRIC: CORNING 7070 EQUIVALENT GLASS (LOW LOSS, MATCHED SEAL).
SHELL (WELD FLANGE): ALUMINUM ALLOY 4047 IN ACCORDANCE WITH AWS A5.8.
5. FINISH:
EXCEPT WELD FLANGE: NICKEL PLATE PER QQ-N-290, CLASS 2, .000100/.000250 THICK
GOLD PLATE PER ASTM B488, TYPE III, CODE A, .000050/.000100 THICK.
6. ORDERING INSTRUCTIONS:
SPECIFY BASE NUMBER FOLLOWED BY DASH NUMBERS INDICATING CONNECTOR END DETENT STYLE:

EXAMPLE: SRIFT521 - FD - FD

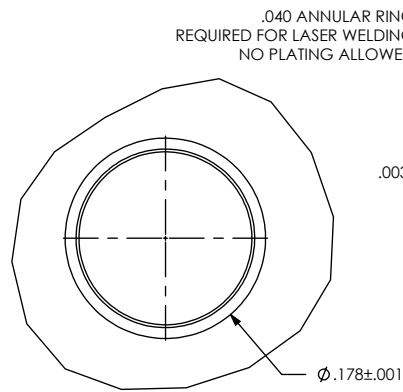
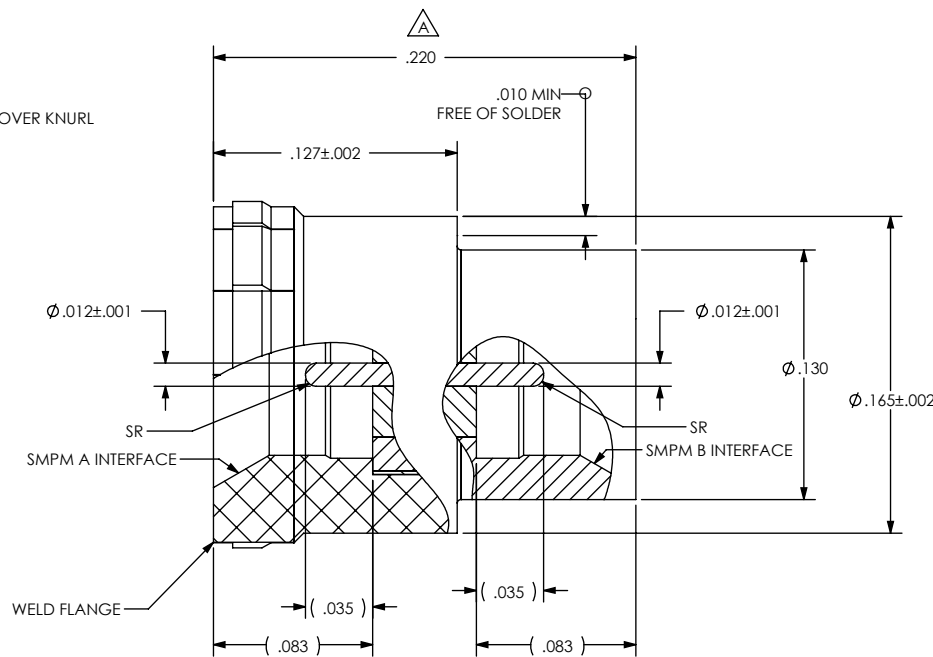
SMPM A DETENT STYLE
FD=FULL DETENT
ND=NO DETENT

SMPM B DETENT STYLE
FD=FULL DETENT
ND=NO DETENT

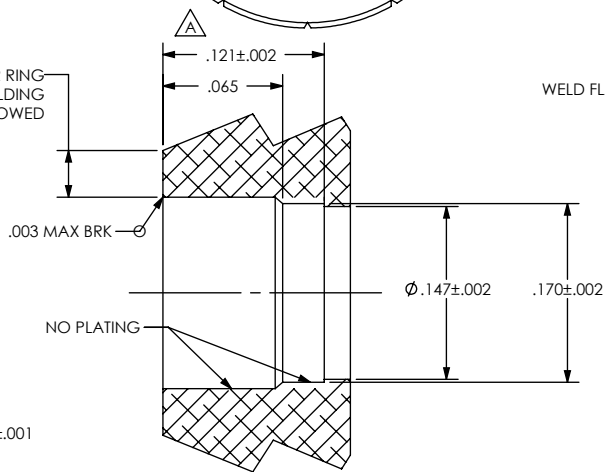
BASE NUMBER



VIEWS FOR REFERENCE ONLY



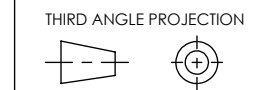
RECOMMENDED HOLE DETAIL



UNLESS OTHERWISE SPECIFIED
DIMENSIONING IAW ASME Y14.5M-1994
DIMENSIONS APPLY AFTER PROCESSES
DIMENSIONS IAW US CUSTOMARY UNITS
.X±.1, .XX±.01, .XXX±.005, ∠ ±.5°
.010 MAX OUTSIDE R, .005 MAX INSIDE R
125 RMS SURFACE FINISH

(321) 254-4067
WWW.SRIHERMETICS.COM

TITLE
CONNECTOR, SMPM TO SMPM, AC LBW



SIZE A	DOCUMENT SRIFT521	REV A
SCALE 10:1	CAGE CODE 3PJY7	SHEET 1 OF 1