

ALUMINUM COMPATIBLE LASER WELDABLE 50 OHM FEEDTHROUGH SMP/SMPM ADAPTABLE,

- CONFIGURATION FOR INTERFACING TO SMP AND SMPM BULLET ADAPTERS
- DESIGNED TO PRESS FIT AND LASER WELD INTO AN ELECTRONIC CHASSIS
- INDUSTRY STANDARD NICKEL-IRON-COBALT ALLOY CONTACT WITH CORNING 7070 EQUIVALENT GLASS

REVISIONS			
REV	DCN	REVISION DATE	RELEASE APPROVAL
-	INIT RLSE	3/29/2012	J. PETER

1. LEAK RATE: LESS THAN OR EQUAL TO 1X10E-9 CC/SEC H_e AT ONE ATMOSPHERE DIFFERENTIAL PRESSURE.
2. NOMINAL IMPEDANCE: 50 OHMS
3. INTERFACE IN ACCORDANCE WITH MIL-STD-348, SERIES SMP AND SERIES SMPM.
4. MATERIALS:
PIN: NICKEL-IRON-COBALT ALLOY IN ACCORDANCE WITH ASTM F15,
DIELECTRIC: CORNING 7070 EQUIVALENT GLASS (LOW LOSS, MATCHED SEAL),
SHELL (WELD FLANGE): ALUMINUM ALLOY 4047 IN ACCORDANCE WITH AWS A5.8.
5. FINISH:
EXCEPT WELD FLANGE: NICKEL PLATE PER QQ-N-290, CLASS 2, .000100/.000250 THICK
GOLD PLATE PER ASTM B488, TYPE III, CODE A, .000050/.000100 THICK.
6. ORDERING INSTRUCTIONS:
SPECIFY BASE NUMBER FOLLOWED BY DASH NUMBERS INDICATING CONNECTOR END DETENT STYLE:

EXAMPLE: SRIFT518 - FD - FD

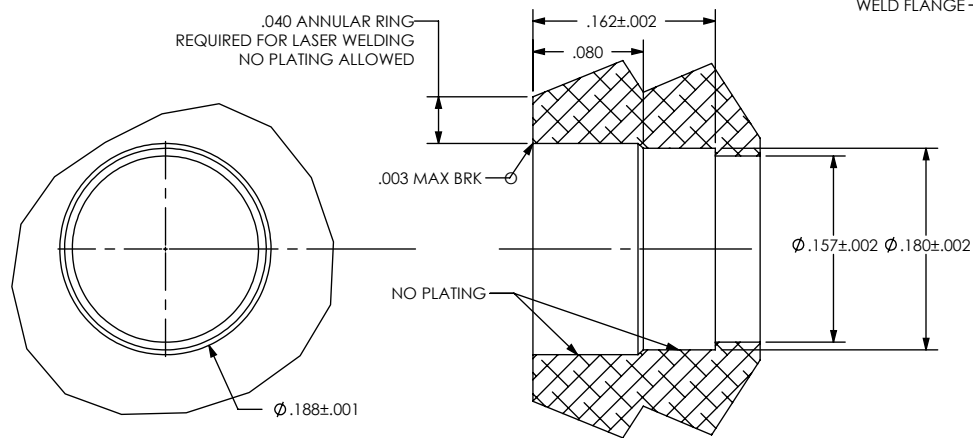
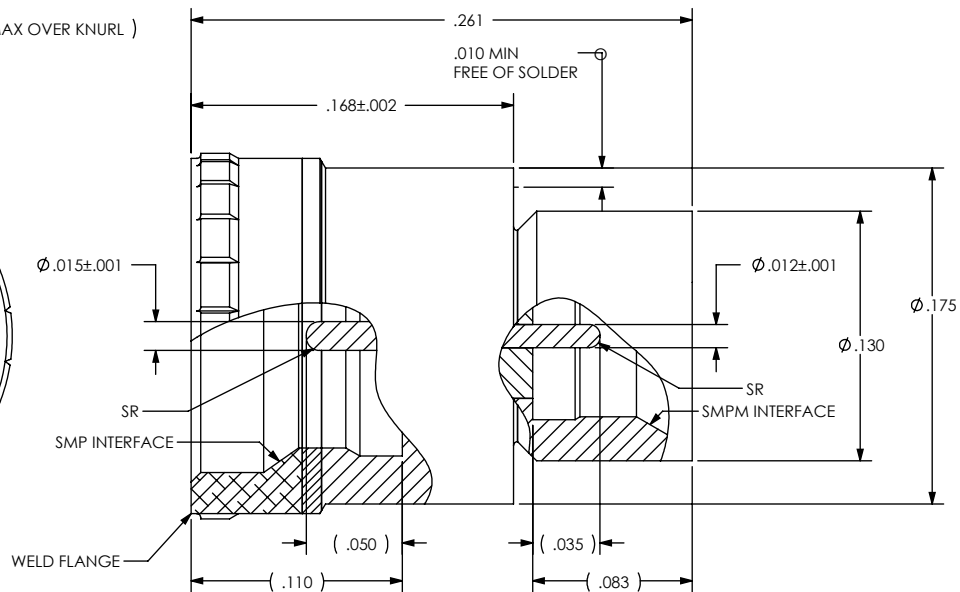
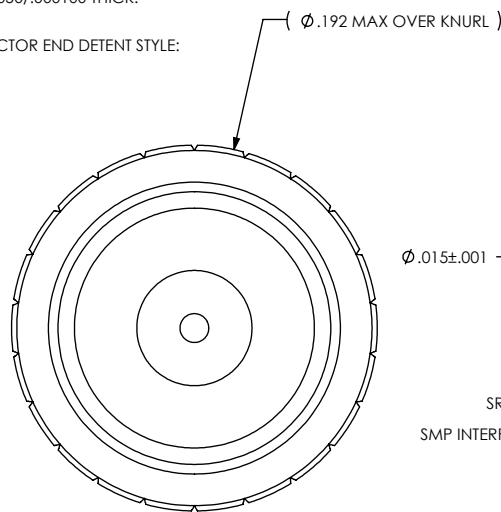
SMPM DETENT STYLE
 FD=FULL DETENT
 ND=NO DETENT

 SMP DETENT STYLE
 FD=FULL DETENT
 LD=LIMITED DETENT
 ND=NO DETENT

 BASE NUMBER



VIEWS FOR REFERENCE ONLY



RECOMMENDED HOLE DETAIL

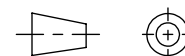
UNLESS OTHERWISE SPECIFIED
 DIMENSIONING IAW ASME Y14.5M-1994
 DIMENSIONS APPLY AFTER PROCESSES
 DIMENSIONS IAW US CUSTOMARY UNITS
 .X ± .1, .XX ± .01, .XXX ± .005, $\angle \pm .5^\circ$
 .010 MAX OUTSIDE R, .005 MAX INSIDE R
 125 RMS SURFACE FINISH



(321) 254-4067
 WWW.SRIHERMETICS.COM

TITLE FEEDTHROUGH, SMP TO SMPM, AC LBW

THIRD ANGLE PROJECTION



SIZE A	DOCUMENT SRIFT518	REV -
SCALE 10:1	CAGE CODE 3PJY7	SHEET 1 OF 1