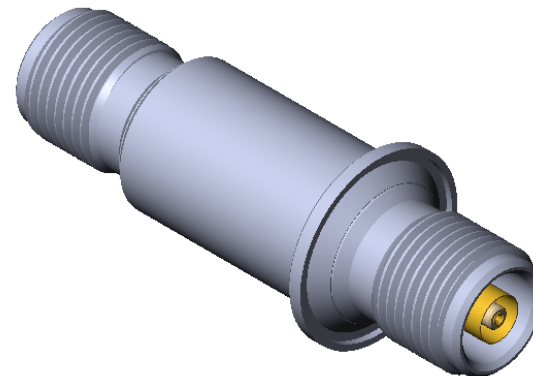


STAINLESS STEEL COMPATIBLE LASER WELDABLE TRIAX CONNECTOR

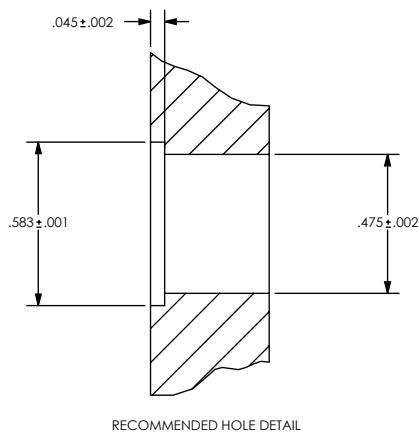
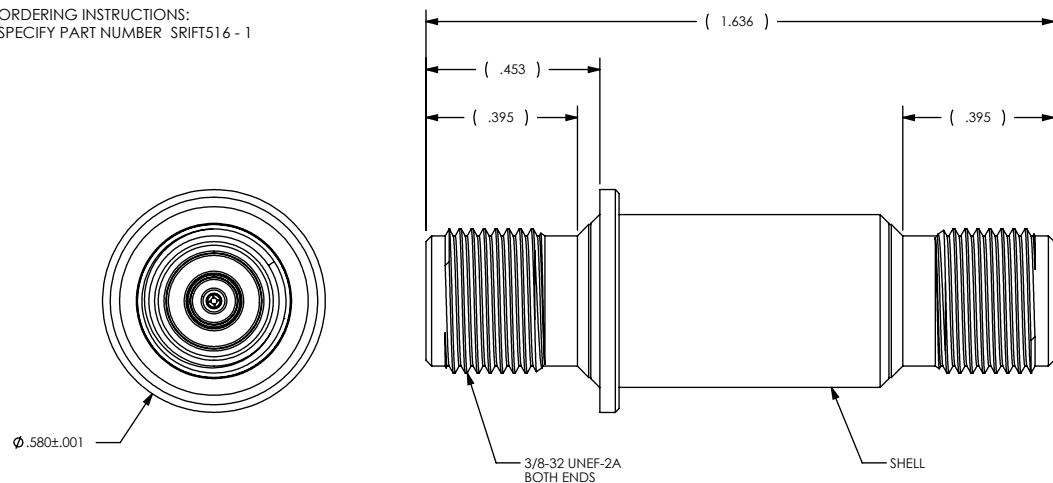
REVISIONS			
REV	CHANGE NO.	DATE	CFG APPROVAL
-	INIT RLSE	9/17/2010	J. PETRI

- DESIGNED TO LASER WELD INTO AN ELECTRONIC CHASSIS WALL OR FLANGE
- DESIGNED TO OPERATE IN A COMMON GROUND CONDITION

1. LEAK RATE: LESS THAN OR EQUAL TO 1X10E-9 CC/SEC He AT ONE ATMOSPHERE DIFFERENTIAL PRESSURE.
2. DOUBLE-ENDED CONFIGURATION WITH THREADED TRIAX INTERFACES.
3. MATERIALS:
 WELD RING: STAINLESS STEEL ALLOY 304L
 INSULATOR: POLYETHERETHERKETONE
 SHELL: STAINLESS STEEL 304L
 PIN/COAX TUBE: NICKEL/GOLD PLATED BERYLLIUM COPPER
 DIELECTRIC SEAL: CERAMAX CERAMIC SEALANT
4. TEMPERATURE RANGE: -200C TO +250C
5. INTERFACE PER MIL-STD-348, THREADED PLUG - SOCKET CENTER CONTACT(DBA)
6. CONNECTOR CONFORMS TO MIL-C-49142
7. ORDERING INSTRUCTIONS:
 SPECIFY PART NUMBER SRIFT516 - 1



ISOMETRIC VIEWS FOR REFERENCE ONLY

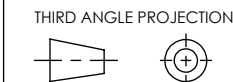


UNLESS OTHERWISE SPECIFIED
 DIMENSIONING IAW ASME Y14.5M-1994
 DIMENSIONS APPLY AFTER PROCESSES
 DIMENSIONS IAW US CUSTOMARY UNITS
 .X±.1, .XX±.01, .XXX±.005, ∠ ±.5°
 .010 MAX OUTSIDE R, .005 MAX INSIDE R
 125 RMS SURFACE FINISH



(321) 254-4067
 WWW.SRIHERMETICS.COM

TITLE
 FEEDTHROUGH, TRIAX, SC LBW



SIZE A	DOCUMENT SRIFT516	REV -
SCALE 2:1	CAGE CODE 3PJY7	SHEET 1 OF 1