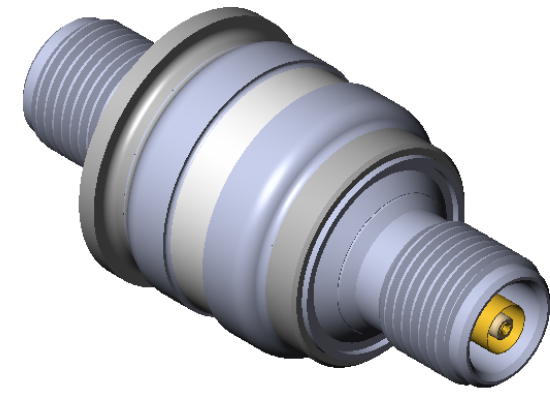


STAINLESS STEEL COMPATIBLE LASER WELDABLE TRIAX CONNECTOR, ISOLATED GROUND

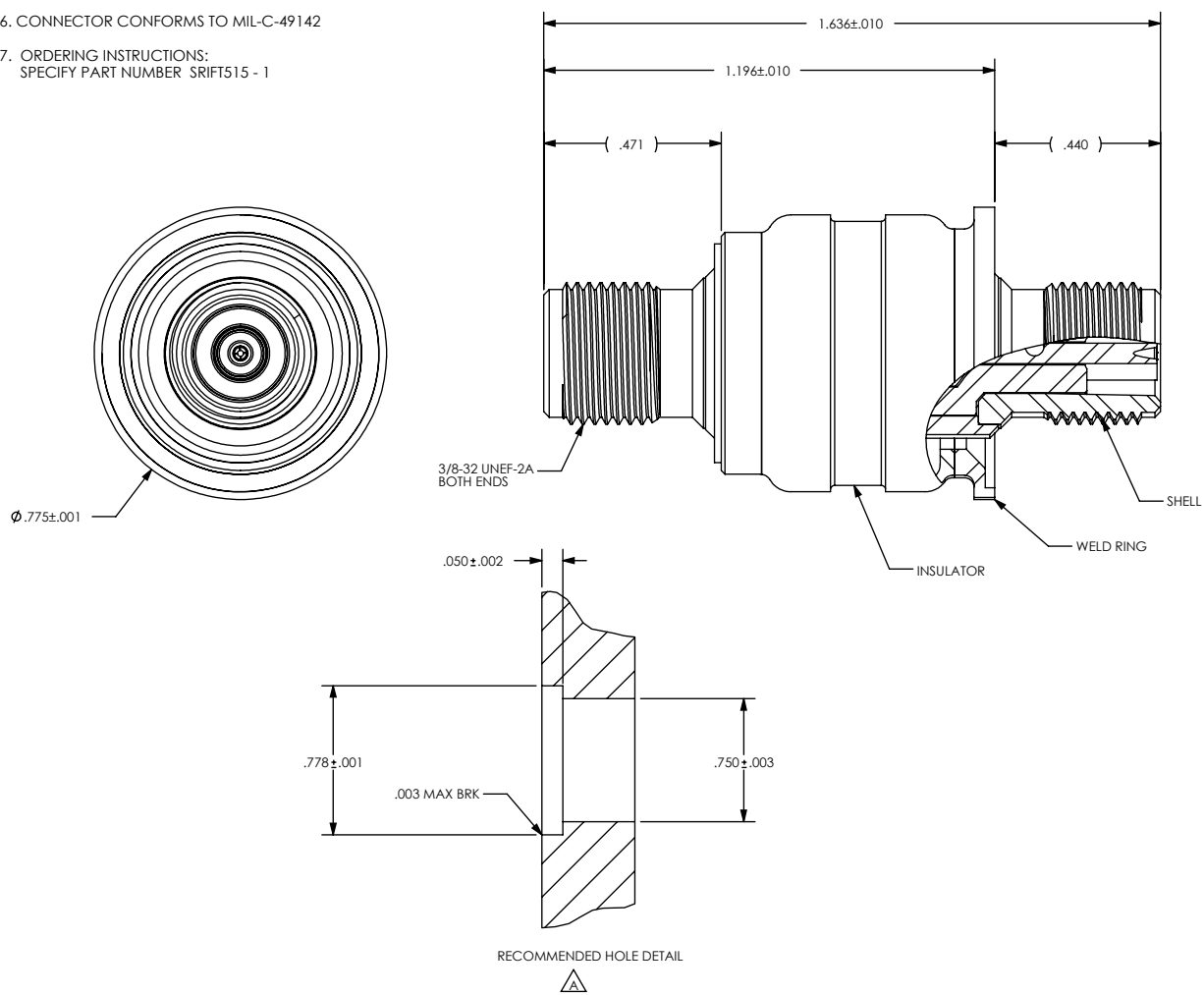
REVISIONS			
REV	CHANGE NO.	DATE	CFG APPROVAL
-	INIT RLSE	9/17/2010	J. PATRI
A	DCN001180	7/8/2013	<i>[Signature]</i>

- DESIGNED TO LASER WELD INTO AN ELECTRONIC CHASSIS WALL OR FLANGE
- DESIGNED TO OPERATE IN AN ISOLATED GROUND CONDITION

1. LEAK RATE: LESS THAN OR EQUAL TO 1X10E-9 CC/SEC He AT ONE ATMOSPHERE DIFFERENTIAL PRESSURE.
2. DOUBLE-ENDED CONFIGURATION WITH THREADED TRIAX INTERFACES.
3. MATERIALS:
 WELD RING: STAINLESS STEEL ALLOY 304L
 INSULATOR: POLYETHERETHERKETONE
 OUTER INSULATOR: ALUMINUM OXIDE
 SHELL: STAINLESS STEEL 304L
 PIN/COAX TUBE: NICKEL/GOLD PLATED BERYLLIUM COPPER
 DIELECTRIC SEAL: CERAMAX CERAMIC SEALANT
4. TEMPERATURE RANGE: -200C TO +250C
5. INTERFACE PER MIL-STD-348, THREADED PLUG - SOCKET CENTER CONTACT(DBA)
6. CONNECTOR CONFORMS TO MIL-C-49142
7. ORDERING INSTRUCTIONS:
 SPECIFY PART NUMBER SRIFT515 - 1



ISOMETRIC VIEW FOR REFERENCE ONLY



UNLESS OTHERWISE SPECIFIED
 DIMENSIONING IAW ASME Y14.5M-1994
 DIMENSIONS APPLY AFTER PROCESSES
 DIMENSIONS IAW US CUSTOMARY UNITS
 .X ± .1, .XX ± .01, .XXX ± .005, ∠ ± .5°
 .010 MAX OUTSIDE R, .005 MAX INSIDE R
 125 RMS SURFACE FINISH

THIRD ANGLE PROJECTION

		(321) 254-4067	
		WWW.SRIHERMETICS.COM	
TITLE			
FEEDTHROUGH, INSULATED, TRIAX, SC LBW			
SIZE	DOCUMENT	SRIFT515	REV
A			A
SCALE	CAGE CODE	3PJY7	SHEET
2:1			1 OF 1