


STAINLESS STEEL COMPATIBLE LASER WELDABLE 2.92mm 50 OHM FEEDTHROUGH FEMALE CABLE ADAPTABLE, COMMON GROUND

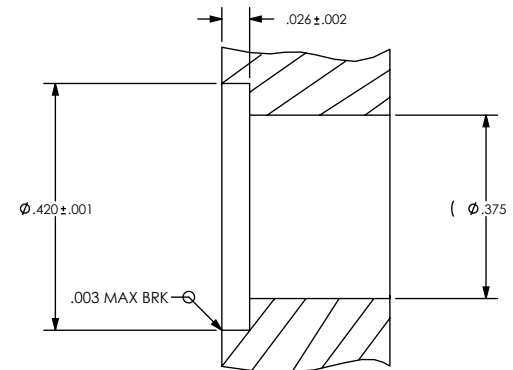
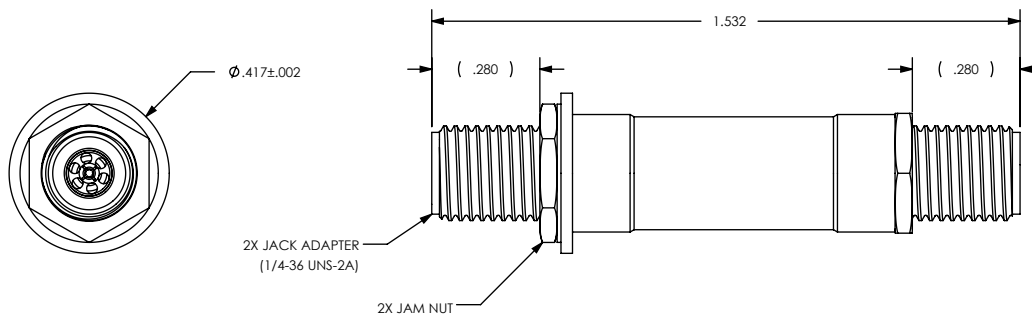
REVISIONS			
REV	DCN	REVISION DATE	RELEASE APPROVAL
-	INIT RLSE	2008-08-05	J. PETRI
A	DCN000669	6/17/2010	J. PETRI
B	DCN001219	9/24/2013	

- DESIGNED TO LASER WELD INTO AN ELECTRONIC CHASSIS WALL OR FLANGE
- DESIGNED TO OPERATE IN AN COMMON GROUND CONDITION

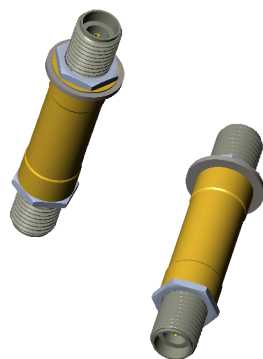
1. LEAK RATE: LESS THAN OR EQUAL TO 1X10E-9 CC/SEC He AT ONE ATMOSPHERE DIFFERENTIAL PRESSURE.
2. NOMINAL IMPEDANCE: 50 OHMS
3. DOUBLE-ENDED CONFIGURATION WITH 2.92 mm SMA JACK ADAPTER INTERFACES.

4. MATERIALS:
 WELD RING: STAINLESS STEEL ALLOY 304L IN ACCORDANCE WITH SAE AMS-QQ-S-763.
 JACK ADAPTER: STAINLESS STEEL ALLOY 300-SERIES
 (SRI CONNECTOR GAGE PART NUMBER 25-145-1510-17, TORQUE TO 13±1 LB-IN)
 JAM NUT: STAINLESS STEEL ALLOY 300-SERIES.
 (PART NUMBER 180033-1, TORQUE TO 19±1 LB-IN)

5. FREQUENCY RANGE: DC TO 40 GHz 
6. TEMPERATURE RANGE: -200C TO +250C
7. ORDERING INSTRUCTIONS:
 SPECIFY PART NUMBER SRIFT510 - 1

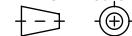


RECOMMENDED HOLE DETAIL



ISOMETRIC VIEWS FOR REFERENCE ONLY
SCALE 1:1

DIMENSIONING IAW ASME Y14.5M-1994
 DIMENSIONS APPLY AFTER PROCESSES
 DIMENSIONS IAW US CUSTOMARY UNITS
 X±.1, XX±.01, XXX±.005, ∠ ±.5°
 .010 MAX OUTSIDE R, .005 MAX INSIDE R
 63 RMS SURFACE FINISH
 THIRD ANGLE PROJECTION



DO NOT SCALE DRAWING



(321) 254-4067
www.srihermetics.com

TITLE FEEDTHROUGH, SMA/SMA, SC LBW

SIZE	DOCUMENT	SRIFT510	REV
A			B
SCALE	2:1	CAGE CODE	3PJY7
		SHEET	1 OF 1