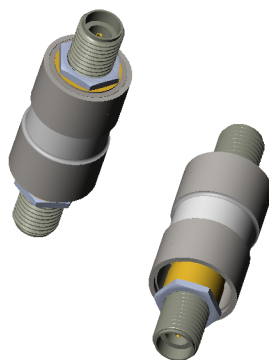
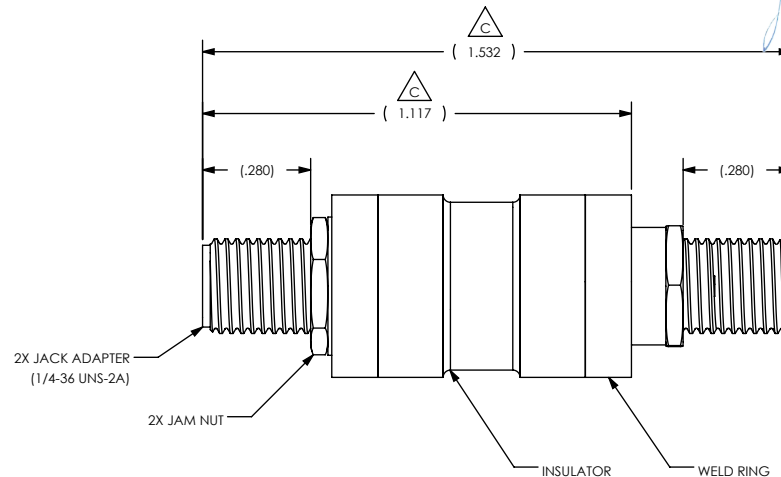
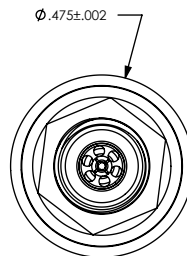


STAINLESS STEEL COMPATIBLE LASER WELDABLE SMA 50 OHM FEEDTHROUGH FEMALE CABLE ADAPTABLE, ISOLATED GROUND

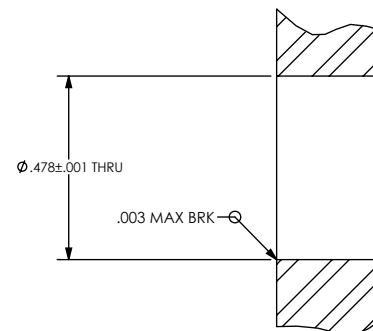
REVISIONS			
REV	CHANGE NO.	DATE	CFG APPROVAL
-	INIT RLSE	2008-02-26	J. PETRI
A	DCN000343	7/22/2008	J. PETRI
B	DCN000677	7/2/2010	J. PETRI
C	DCN001353	4/29/2014	<i>[Signature]</i>

- DESIGNED TO LASER WELD INTO AN ELECTRONIC CHASSIS WALL OR FLANGE
- DESIGNED TO OPERATE IN AN ISOLATED GROUND CONDITION


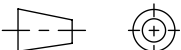
1. LEAK RATE: LESS THAN OR EQUAL TO 1X10E-9 CC/SEC He AT ONE ATMOSPHERE DIFFERENTIAL PRESSURE.
2. NOMINAL IMPEDANCE: 50 OHMS
3. DOUBLE-ENDED CONFIGURATION WITH 2.92 mm SMA JACK ADAPTER INTERFACES.
4. MATERIALS:
 WELD RING: STAINLESS STEEL ALLOY 304L IN ACCORDANCE WITH SAE AMS-QQ-S-763.
 INSULATOR: ALUMINUM OXIDE (96% OR GREATER).
 JACK ADAPTER: STAINLESS STEEL ALLOY 300-SERIES
 (SRI CONNECTOR GAGE PART NUMBER 25-145-1510-17, TORQUE TO 13±1 LB-IN)
 JAM NUT: STAINLESS STEEL ALLOY 300-SERIES.
 (PART NUMBER 180033-1, TORQUE TO 19±1 LB-IN)
5. FREQUENCY RANGE: DC TO 45 GHz
6. TEMPERATURE RANGE: -200C TO +250C
7. ORDERING INSTRUCTIONS:
 SPECIFY PART NUMBER SRIFT509 - 1



ISOMETRIC VIEWS FOR REFERENCE ONLY
SCALE 1:1



RECOMMENDED HOLE DETAIL

UNLESS OTHERWISE SPECIFIED		 (321) 254-4067 WWW.SRIHERMETICS.COM	
DIMENSIONING IAW ASME Y14.5M-1994 DIMENSIONS APPLY AFTER PROCESSES DIMENSIONS IAW US CUSTOMARY UNITS .X ±.1, .XX ±.01, .XXX ±.005, ∠ ±.5° .010 MAX OUTSIDE R, .005 MAX INSIDE R 125 RMS SURFACE FINISH		TITLE FEEDTHROUGH, INSULATED, SMA/SMA, SC LBW	
THIRD ANGLE PROJECTION		SIZE A	DOCUMENT SRIFT509
SCALE 2:1	CAGE CODE 3PJY7	SHEET 1 OF 1	REV C