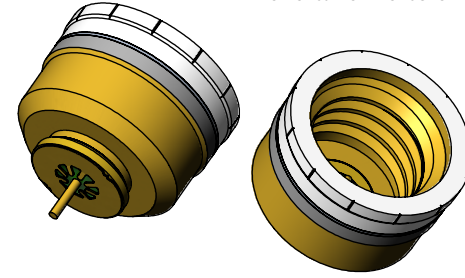


ALUMINUM COMPATIBLE LASER WELDABLE 50 OHM FEEDTHROUGH SSMA ADAPTABLE, .012 OR .015 DIAMETER CENTER CONTACT

| REVISIONS | | | |
|-----------|------------|------------|------------------|
| REV | CHANGE NO. | DATE | RELEASE APPROVAL |
| - | INIT RLSE | 2008-09-29 | J. PETRI |
| A | DCN000638 | 4/22/2010 | J. PETRI |
| B | DCN000844 | 6/10/2011 | J. PETRI |
| C | DCN001 | | |

PRELIMINARY
DO NOT USE FOR PRODUCTION



VIEWS FOR REFERENCE ONLY

- CONFIGURATION FOR INTERFACING TO PANEL JACK ADAPTER (SRI CONNECTOR GAGE PART NUMBER 13-150-1500-00, INSTALL AT 13±1 LB-IN)
- DESIGNED TO LASER WELD INTO AN ELECTRONIC CHASSIS
- INDUSTRY STANDARD NICKEL-IRON-COBALT ALLOY CONTACT WITH CORNING 7070 EQUIVALENT GLASS
- INTEGRAL RF GROUNDING TAB FOR EXCELLENT PERFORMANCE OVER TEMPERATURE

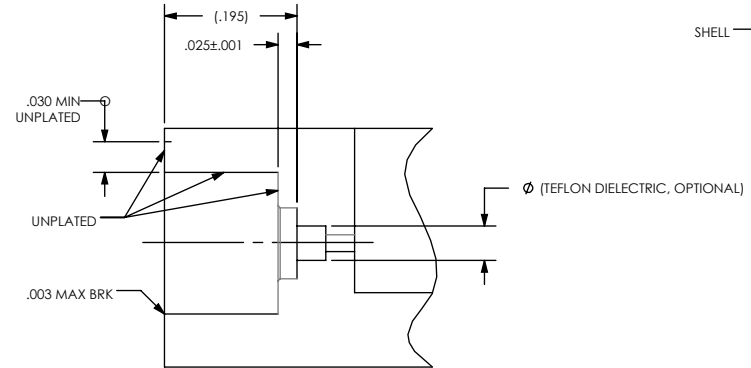
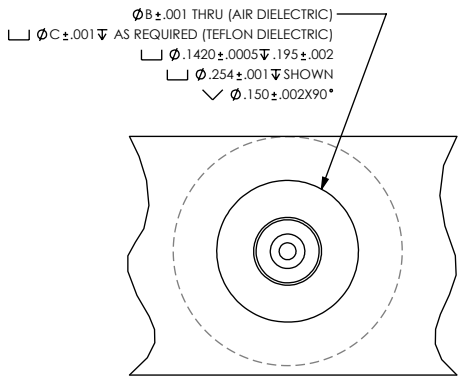
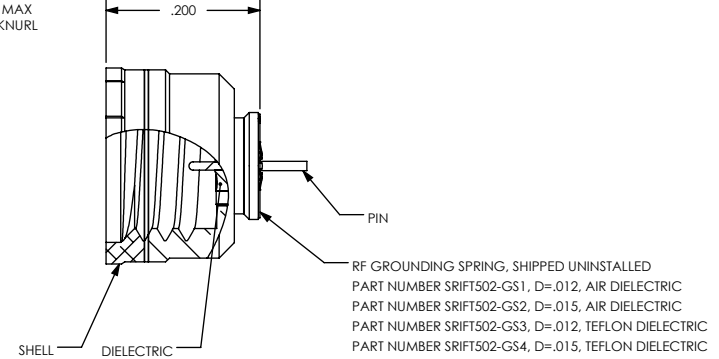
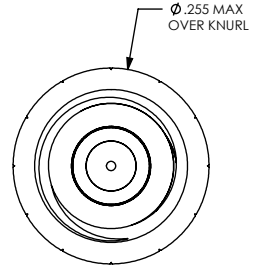
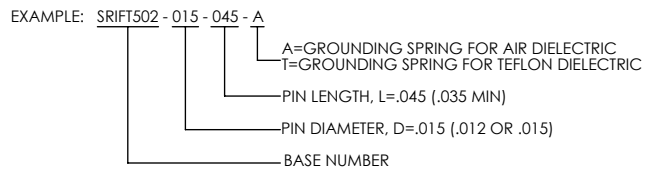
1. LEAK RATE: LESS THAN OR EQUAL TO 1X10E-9 CC/SEC He AT ONE ATMOSPHERE DIFFERENTIAL PRESSURE.
2. NOMINAL IMPEDANCE: 50 OHMS
3. INTERFACE IN ACCORDANCE WITH MIL-STD-348, SERIES SSMA.

4. MATERIALS:
 PIN: NICKEL-IRON-COBALT ALLOY IN ACCORDANCE WITH ASTM F15.
 DIELECTRIC: CORNING 7070 EQUIVALENT GLASS (LOW LOSS, MATCHED SEAL).
 SHELL (WELD FLANGE): ALUMINUM ALLOY 4047 IN ACCORDANCE WITH AWS A5.8.
 RF GROUNDING SPRING: BERYLLIUM-COPPER ALLOY 172/173 IN ACCORDANCE WITH ASTM B 194 (NICKEL/GOLD PLATED)

5. FINISH:
 SHELL (EXCEPT WELD FLANGE): NICKEL UNDERPLATE .000400 MAX THICK
 GOLD PLATE PER ASTM B488-11, TYPE III, CODE A, .000050/.000100 THICK.

PIN: NICKEL PLATE PER AMS-QQ-N-290, CLASS 2, .000100/.000250 THICK
 GOLD PLATE PER ASTM B488-11, TYPE III, CODE A, .000050/.000100 THICK.

6. ORDERING INSTRUCTIONS:
 SPECIFY BASE NUMBER FOLLOWED BY DASH NUMBERS INDICATING PIN DIAMETER, PIN LENGTH AND DIELECTRIC STYLE:



RECOMMENDED HOLE DETAIL

| PART NUMBER | D | B | C |
|--------------------------|------|-------|-------|
| SRIFT502 - 012 - XXX - A | .012 | .028 | ----- |
| SRIFT502 - 012 - XXX - T | .012 | ----- | .039 |
| SRIFT502 - 015 - XXX - A | .015 | .035 | ----- |
| SRIFT502 - 015 - XXX - T | .015 | ----- | .049 |

DIMENSIONING IAW ASME Y14.5M-1994
 DIMENSIONS APPLY AFTER PROCESSES
 DIMENSIONS IAW US CUSTOMARY UNITS
 X ± .1, XX ± .01, XXX ± .005, $\angle \pm 5^\circ$
 .010 MAX OUTSIDE R, .005 MAX INSIDE R
 63 RMS SURFACE FINISH
 THIRD ANGLE PROJECTION

SRI HERMETICS
 a division of WINCHESTER

(321) 254-4067
 www.srihermetics.com

TITLE: FEEDTHROUGH, THREADED SSMA, AC LBW

SIZE DOCUMENT: SRIFT502 REV C

DO NOT SCALE DRAWING SCALE: 4:1 CAGE CODE: 3PJY7 SHEET: 1 OF 1