

ALUMINUM COMPATIBLE LASER WELDABLE 50 OHM FEEDTHROUGH SMA ADAPTABLE, .012, .015, .020 DIAMETER CENTER CONTACT

REVISIONS			
REV	CHANGE NO.	DATE	CFG APPROVAL
-	INIT RLSE	2008-08-06	J. PETRI
A	DCN000375	9/26/2008	J. PETRI
B	DCN000567	10/15/2009	J. PETRI
C	DCN000654	5/18/2010	J. PETRI

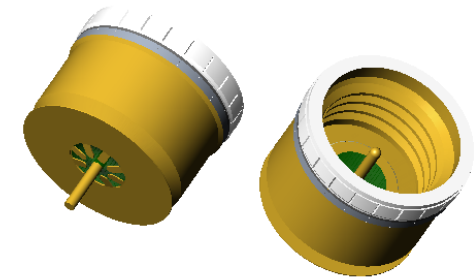
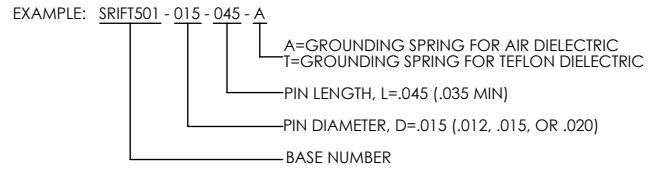
- CONFIGURATION FOR INTERFACING TO PANEL JACK ADAPTER (SRI CONNECTOR GAGE PART NUMBER 21-150-1500-0, INSTALL AT 13±1 LB-IN)
- DESIGNED TO LASER WELD INTO AN ELECTRONIC CHASSIS
- INDUSTRY STANDARD NICKEL-IRON-COBALT ALLOY CONTACT WITH CORNING 7070 EQUIVALENT GLASS
- INTEGRAL RF GROUNDING TAB FOR EXCELLENT PERFORMANCE OVER TEMPERATURE

1. LEAK RATE: LESS THAN OR EQUAL TO 1X10E-9 CC/SEC He AT ONE ATMOSPHERE DIFFERENTIAL PRESSURE.
2. NOMINAL IMPEDANCE: 50 OHMS
3. INTERFACE IN ACCORDANCE WITH MIL-STD-348, SMA.
4. MATES WITH .427 MIN LONG PANEL JACK.

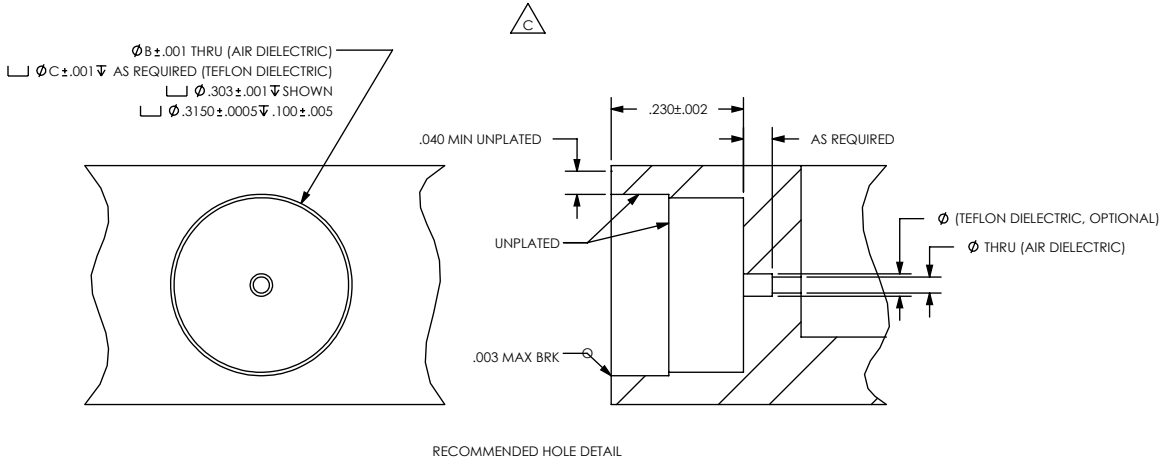
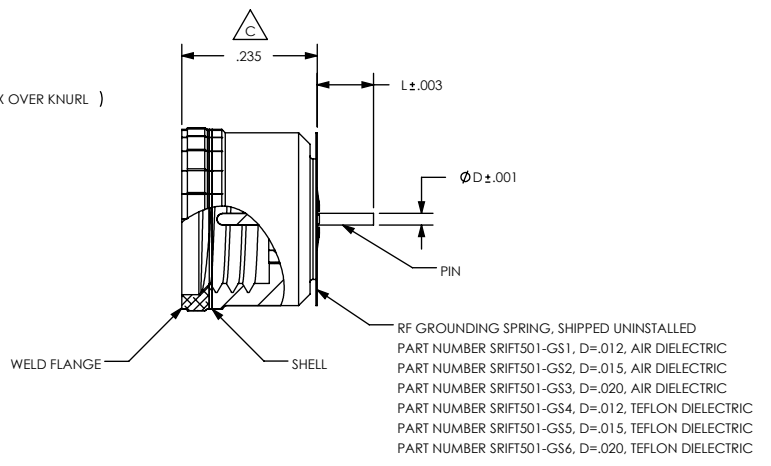
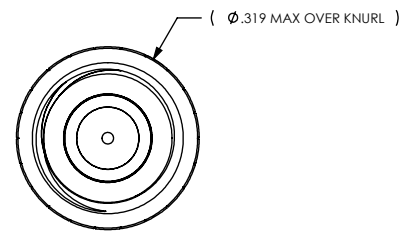
5. MATERIALS:
 PIN: NICKEL-IRON-COBALT ALLOY IN ACCORDANCE WITH ASTM F15.
 DIELECTRIC: CORNING 7070 EQUIVALENT GLASS (LOW LOSS, MATCHED SEAL).
 SHELL (WELD FLANGE): ALUMINUM ALLOY 4047 IN ACCORDANCE WITH AWS A5.8.
 RF GROUNDING SPRING: BERYLLIUM-COPPER ALLOY 172/173 IN ACCORDANCE WITH ASTM B 194 (NICKEL/GOLD PLATED)

6. FINISH:
 EXCEPT WELD FLANGE: NICKEL PLATE PER QQ-N-290, CLASS 2, .000100/.000250 THICK
 GOLD PLATE PER ASTM B488-01, TYPE III, CODE A, .000050/.000100 THICK.

7. ORDERING INSTRUCTIONS:
 SPECIFY BASE NUMBER FOLLOWED BY DASH NUMBERS INDICATING PIN DIAMETER, D, PIN LENGTH, L, AND DIELECTRIC TYPE:



VIEWS FOR REFERENCE ONLY



PART NUMBER	D	B	C
SRIFT501-012-XXX-A	.012	.0280	.0390
SRIFT501-012-XXX-T	.012	.0280	.0390
SRIFT501-015-XXX-A	.015	.0345	.0490
SRIFT501-015-XXX-T	.015	.0345	.0490
SRIFT501-020-XXX-A	.020	.0460	.0650
SRIFT501-020-XXX-T	.020	.0460	.0650

UNLESS OTHERWISE SPECIFIED
 DIMENSIONING IAW ASME Y14.5M-1994
 DIMENSIONS APPLY AFTER PROCESSES
 DIMENSIONS IAW US CUSTOMARY UNITS
 .X±.1, .XX±.01, .XXX±.005, ∠ ±.5°
 .010 MAX OUTSIDE R., .005 MAX INSIDE R
 125 RMS SURFACE FINISH

SRI HERMETICS (321) 254-4067
 WWW.SRIHERMETICS.COM

TITLE: CONNECTOR, SMA, ALUMINUM LASER WELDABLE

THIRD ANGLE PROJECTION

SIZE A	DOCUMENT	SRIFT501	REV C
SCALE 3:1	CAGE CODE	3PJY7	SHEET 1 OF 1