

REVISIONS			
REV	CHANGE NO.	DATE	CFG APPROVAL
-	INIT RLSE	08-12-2009	J. PETRI

ALUMINUM COMPATIBLE LASER WELDABLE DC FEEDTHROUGH .030 DIAMETER CENTER CONTACT

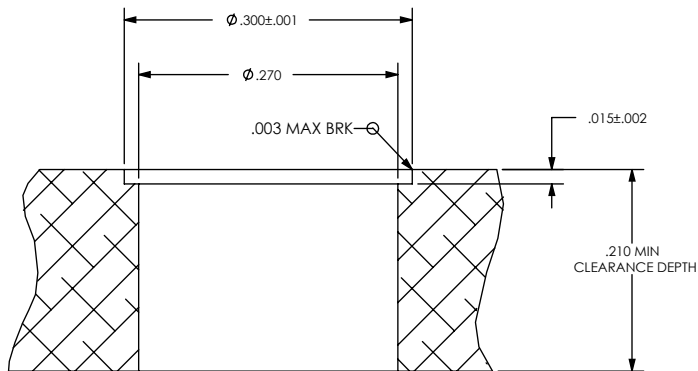
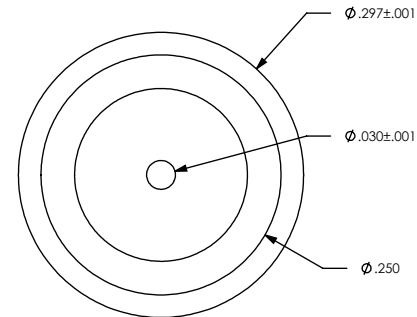
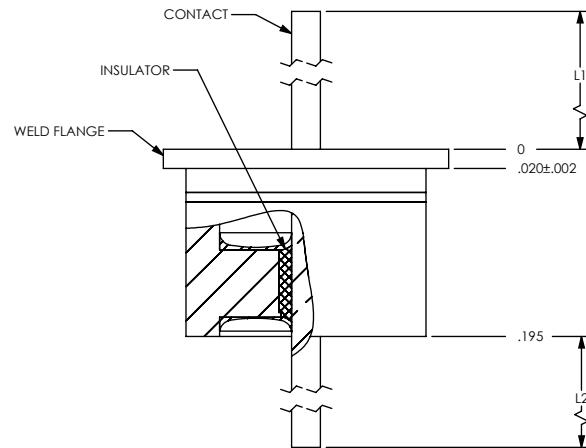
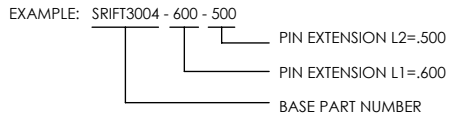
- DESIGNED FOR LASER WELD INSTALLATION
- INCORPORATES BERYLLIUM-COPPER ALLOY CONTACT SEALED USING CERAMAX® PROPRIETARY CERAMIC TO ESTABLISH A DURABLE HERMETIC SEAL

1. LEAK RATE: LESS THAN OR EQUAL TO 1X10E-9 CC/SEC He AT ONE ATMOSPHERE DIFFERENTIAL PRESSURE.
2. VOLTAGE RATING: 1500 VDC MAXIMUM CONTINUOUS.
3. CURRENT RATING: 10A MAXIMUM.

2. MATERIALS:
CONTACT: BERYLLIUM-COPPER ALLOY 172/173 IN ACCORDANCE WITH ASTM B196/197.
INSULATOR: CERAMAX PROPRIETARY CERAMIC.
WELD FLANGE: ALUMINUM ALLOY 4047 IN ACCORDANCE WITH AWS A5.8.

5. FINISH:
CONTACT: NICKEL PLATE PER QQ-N-290, CLASS 2, .000100/.000250 THICK.
GOLD PLATE PER ASTM B488-01, TYPE III, CODE A, .000050/.000100 THICK.

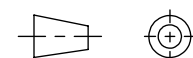
6. ORDERING INSTRUCTIONS:
SPECIFY BASE NUMBER FOLLOWED BY DASH NUMBERS INDICATING PIN EXTENSIONS, L1 AND L2:



SUGGESTED HOLE DETAIL

UNLESS OTHERWISE SPECIFIED
DIMENSIONING IAW ASME Y14.5M-1994
DIMENSIONS APPLY AFTER PROCESSES
DIMENSIONS IAW US CUSTOMARY UNITS
.X±.1, .XX±.01, .XXX±.005, ∠±.5°
.010 MAX OUTSIDE R, .005 MAX INSIDE R
125 RMS SURFACE FINISH

THIRD ANGLE PROJECTION



(321) 254-4067
WWW.SRIHERMETICS.COM

TITLE
FEEDTHROUGH, DC, HIGH VOLTAGE (.030D)

SIZE A	DOCUMENT SRIFT3004	REV -
SCALE 5:1	CAGE CODE 3PJY7	SHEET 1 OF 1