

# LASER WELDABLE DC FEEDTHROUGH, .030 DIAMETER CENTER CONTACT

REVISIONS			
REV	CHANGE NO.	DATE	CFG APPROVAL
-	INIT RLSE	2009-12-01	J. PETRI

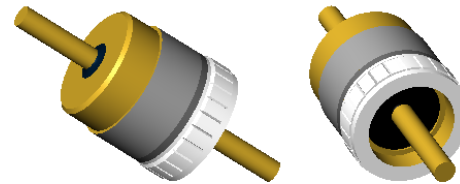
- DESIGNED TO LASER WELD INTO AN ELECTRONIC CHASSIS.
- INCORPORATES BERYLLIUM-COPPER ALLOY CONTACT SEALED USING CERAMAX® PROPRIETARY CERAMIC TO ESTABLISH A DURABLE HERMETIC SEAL.

1. LEAK RATE: LESS THAN OR EQUAL TO  $1 \times 10^{-9}$  CC/SEC  $H_2$  AT ONE ATM DIFFERENTIAL PRESSURE.
2. MATERIAL:  
CONTACT: BERYLLIUM-COPPER ALLOY 172/173 IN ACCORDANCE WITH ASTM B196 OR B197.  
SHELL (WELD FLANGE): ALUMINUM ALLOY 4047 IN ACCORDANCE WITH AWS A5.8.  
POTTING: HYSOL FP4402
3. FINISH:  
CONTACT: NICKEL PLATE PER QQ-N-290, CLASS 2, .000100/.000250 THICK.  
GOLD PLATE PER ASTM B488-01, TYPE III, CODE A, .000050/.000100 THICK.
4. CURRENT RATING: 10A
5. ORDERING INSTRUCTIONS:  
SPECIFY BASE NUMBER FOLLOWED BY DASH NUMBERS INDICATING EXTERNAL PIN LENGTH, INTERNAL PIN LENGTH, CAPACITANCE, VOLTAGE RATING, AND TEST LEVEL.

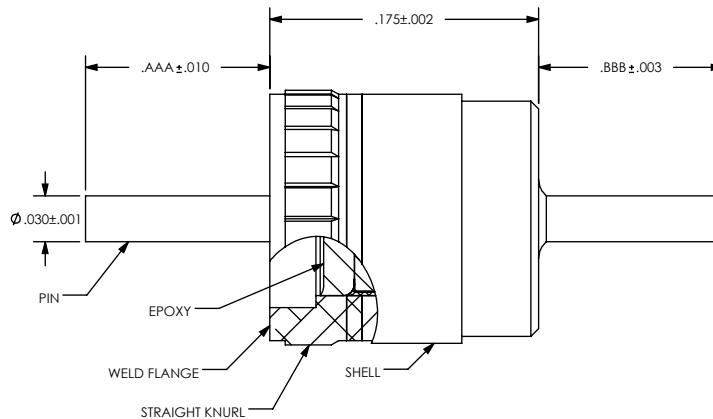
SRIFT3002 - AAA BBB CCX V - S

- ADD S FOR SPACE LEVEL TESTING (MIL-PRF-28861, CLASS S)
- VOLTAGE RATING (SEE TABLE I)
- CAPACITANCE: THE FIRST TWO SIGNIFICANT DIGITS OF CAPACITANCE IN PICO FARADS FOLLOWED BY NUMBER OF ZEROES TO ORDER UNFILTERED, SPECIFY 000
- INTERNAL PIN LENGTH
- EXTERNAL PIN LENGTH
- BASE NUMBER

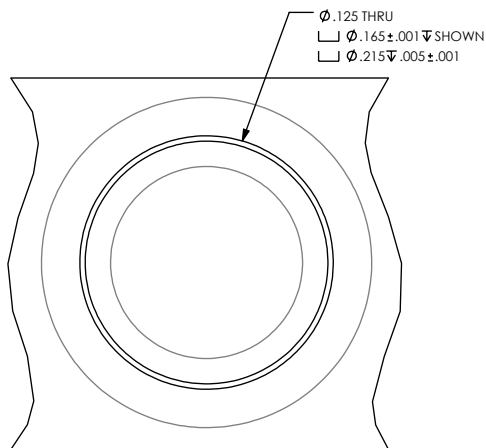
VOLTAGE RATING	
1	50 VDC
2	100 VDC
3	125 VDC
4	150 VDC
5	200 VDC
6	250 VDC
7	300 VDC



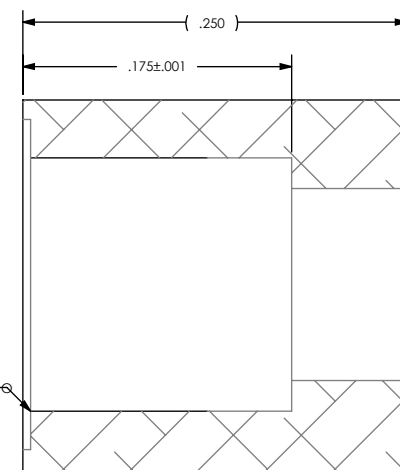
VIEWS FOR REFERENCE ONLY  
SCALE 4:1



(  $\phi .169$  MAX OVER KNURL )



RECOMMENDED HOLE DETAIL



UNLESS OTHERWISE SPECIFIED  
DIMENSIONING IAW ASME Y14.5M-1994  
DIMENSIONS APPLY AFTER PROCESSES  
DIMENSIONS IAW US CUSTOMARY UNITS  
 $X \pm .1, .XX \pm .01, .XXX \pm .005, \angle \pm .5^\circ$   
.010 MAX OUTSIDE R, .005 MAX INSIDE R  
125 RMS SURFACE FINISH



(321) 254-4067  
WWW.SRIHERMETICS.COM

TITLE			
FILTER, DC, LASER WELDABLE			
SIZE	DOCUMENT	SRIFT3002	REV
A			-
SCALE	CAGE CODE	3PJY7	SHEET
8:1			1 OF 1

